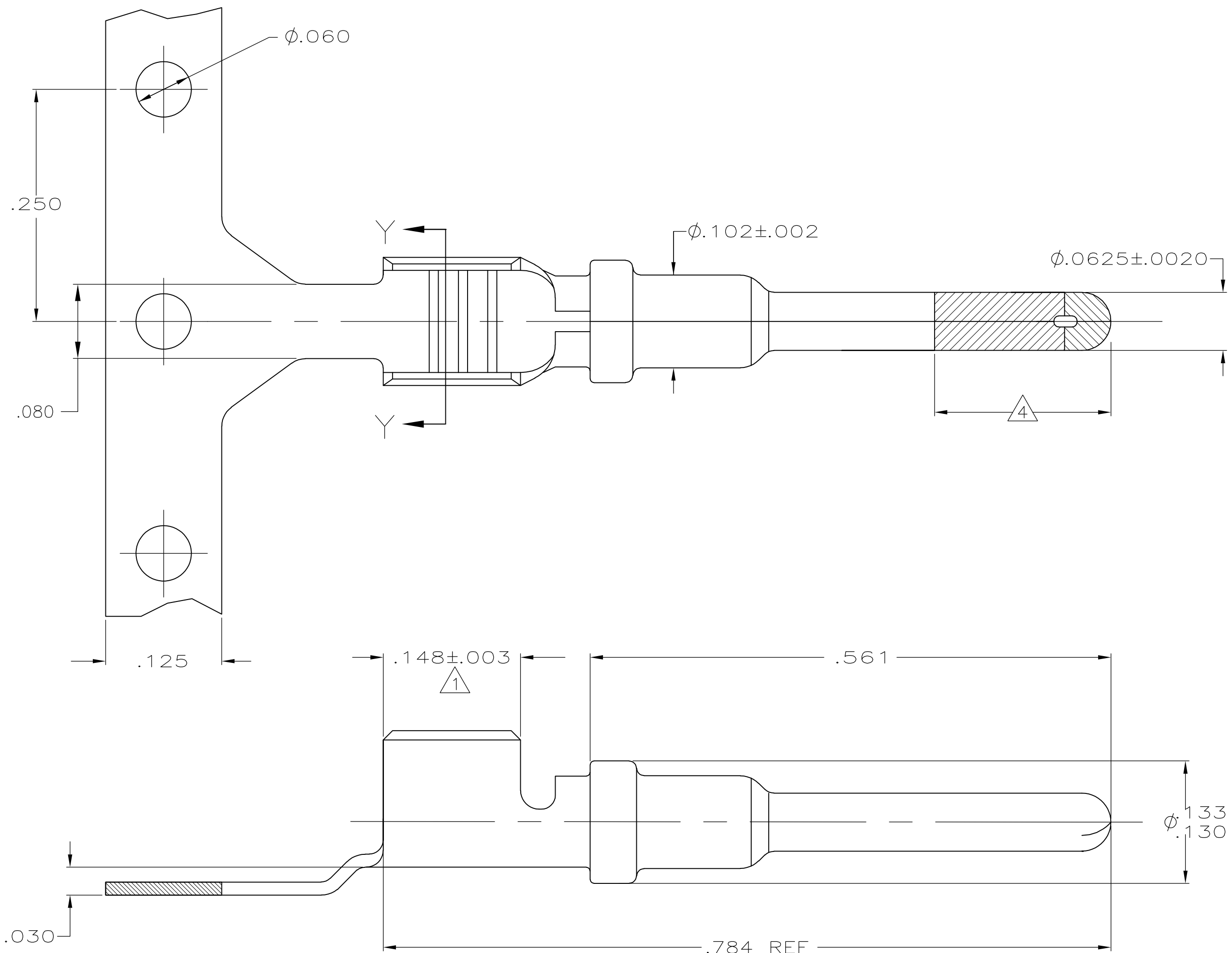
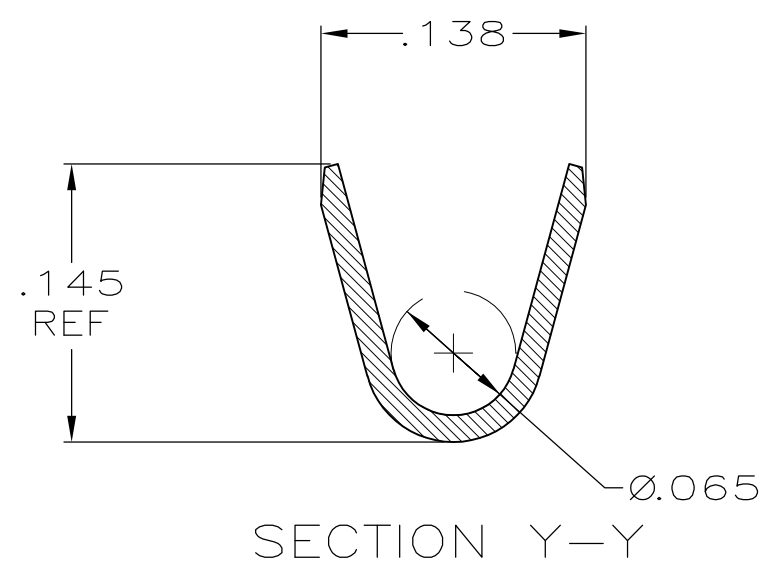


THIS DRAWING IS UNPUBLISHED. RELEASED FOR PUBLICATION  
 © COPYRIGHT - By - ALL RIGHTS RESERVED.

LOC	DIST	REVISIONS			
P	LTR	DESCRIPTION	DATE	DWN	APVD
GE	33	C2	REVISED PER ECO-11-005030	11MAR11	RK HMR



- ① FINISH : PLATE 0.000100-0.000200 THK TIN IN LOCALIZED TIN PLATE AREA, ALL OVER 0.000030-0.000070 THK NICKEL.
- 2. CONTACT WILL BE LUBED WITH LUBRICANT PER P/N 22014-4.
- 3. WIRE RANGE: 18-14 AWG SXL, GXL, AND TXL WIRE WITH INSL DIAMETERS OF 0.077-0.155 INCHES.
- ④ PLATE 0.000030 MIN THK SELECT GOLD IN LOCALIZED PLATE AREA.
- ⑤ PLATE .000100-.000200 THK TIN PER 112-65-1 IN LOCALIZED TIN PLATE AREA. ALL OVER .000040-.000080 THK NICKEL PER 112-25-2



⑤	638112-3
① ④	638112-1

THIS DRAWING IS A CONTROLLED DOCUMENT.		DWN	JL MCNEAL	9-30-97	TE Connectivity		
DIMENSIONS: INCHES		CHK	-	-	NAME		
TOLERANCES UNLESS OTHERWISE SPECIFIED:		APVD	W. LONG	10-1-97	PIN CONTACT WIRE-TO-WIRE		
0 PLC ± -		PRODUCT SPEC	-	-	SIZE	CAGE CODE	DRAWING NO
1 PLC ± -		APPLICATION SPEC	-	-	A2	00779	C=638112
2 PLC ± .02		WEIGHT	-	-	SCALE	SHEET	REV
3 PLC ± .005		CUSTOMER DRAWING	-	-	10:1	1 of 1	C2
4 PLC ± -		MATERIAL		RESTRICTED TO		-	
ANGLES ± -		BODY: 0.014 THK COPPER ALLOY		-		-	
FINISH		-		-		-	