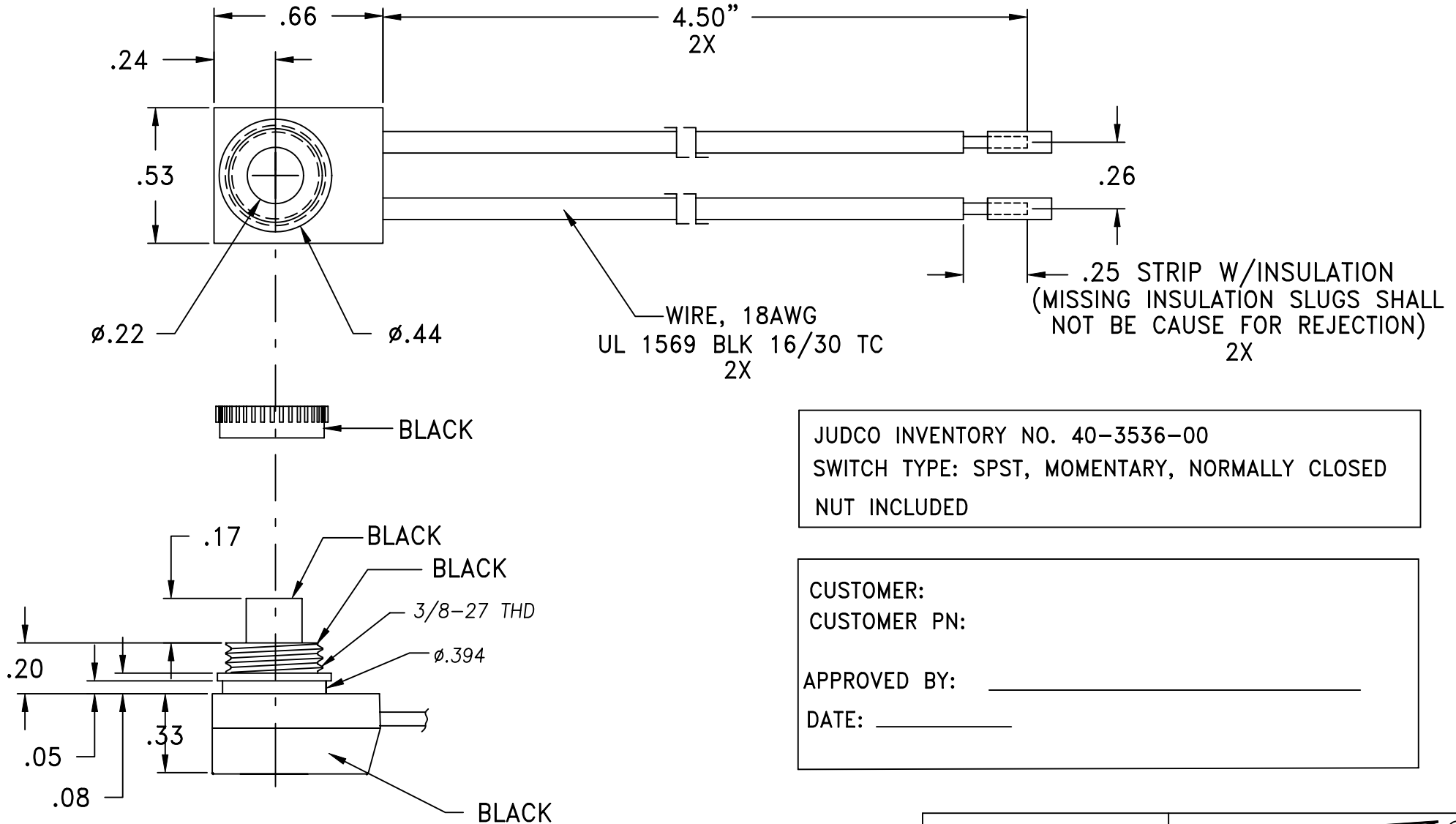
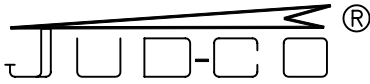


LTR	EN	DESCRIPTION	APPR	BY	DATE
A	-	INITIAL RELEASE	RB	NH	11-10-03
A1	-	UPDATED SIGNATURE BLOCK TO NEW FORMAT	MT	DC	12-11-08



JUDCO INVENTORY NO. 40-3536-00  
 SWITCH TYPE: SPST, MOMENTARY, NORMALLY CLOSED  
 NUT INCLUDED

CUSTOMER:  
 CUSTOMER PN:  
 APPROVED BY: \_\_\_\_\_  
 DATE: \_\_\_\_\_

DIMENSIONS IN INCHES DIMENSIONS ARE REFERENCE		 HARBOR CITY CALIFORNIA	
DRAWN: NH 11-10-03		TITLE OUTLINE	
APPR: KJ 12-11-08		J-188B-3 NON UL WIRES	
ENG'G: IS 12-11-08		DWG. NO. 1415-496	
1415U496A1.DWG		SHEET 1 OF 1	

This document embodies a product, component, and/or design proprietary to JUDCO MANUFACTURING INC., and which is protected either as a trade secret, by U.S. Patent, or by copyright. It may not be used in any way without written express consent of JUDCO MANUFACTURING INC.