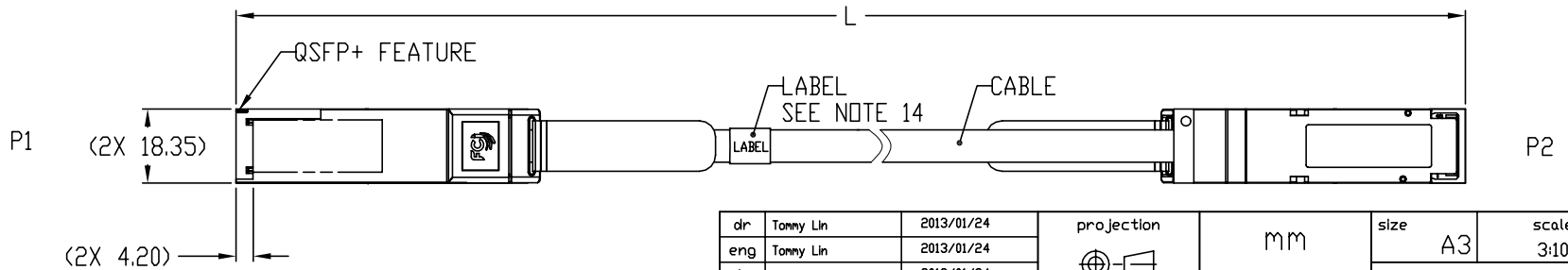
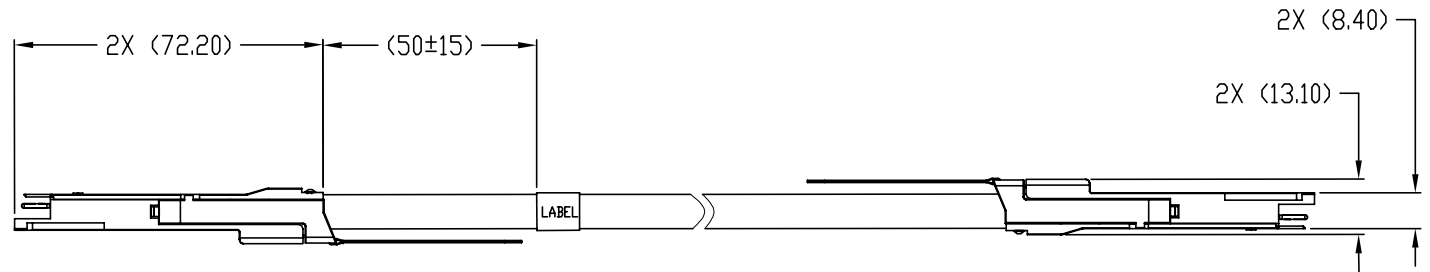
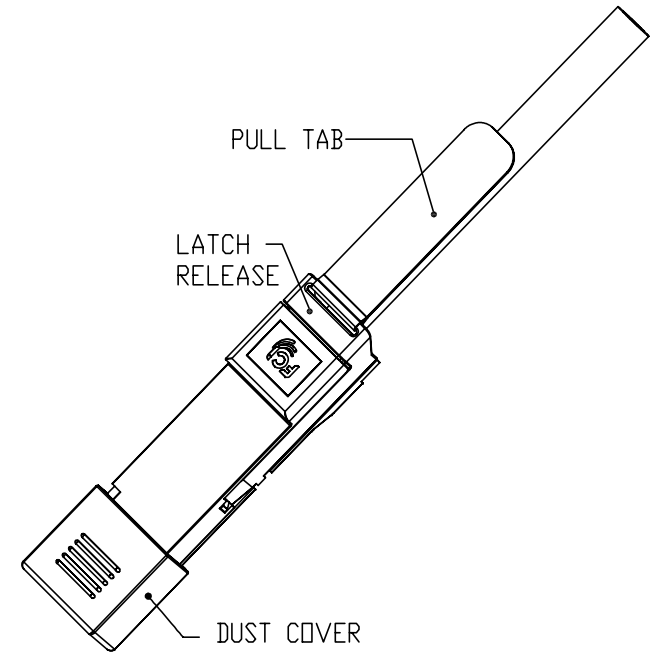


FCI P/N (SEE NOTE 10)	AWG	L(Meter)	NOTE
10124176-3010LF	28	1.0	NON-HALOGEN FREE
10124176-3030LF	28	3.0	
10124176-4050LF	26	5.0	
10124176-5070LF	24	7.0	

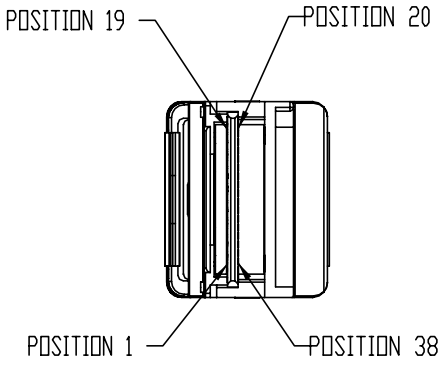


dr	Tonny Lin	2013/01/24	projection	mm	size	A3	scale	3:10
eng	Tonny Lin	2013/01/24			ecn no			
chr	Tonny Lin	2013/01/24	product family	QSFP PLUG	rel level			
appr	Roger Cheng	2013/01/24						
www.fci.com			cat. no.	-	Product - Customer Drw			sheet 1 of 3

FCI	title	QSFP+ (PASSIVE) ASSEMBLY			dwg no	10124176		rev	A



Copyright FCI.



LOW SPEED SIGNALS	
P1 & P2	
POSITION	SYMBOL
8	ModSelL
9	ResetL
10	VccRx
11	SCL
12	SDA
27	ModPrsL
28	IntL
29	VccTx
30	Vcc1
31	LPMode

TABLE 1

WIRING LIST (SEE NOTE 6)				
END P1			END P2	
POSITION	SYMBOL		POSITION	SYMBOL
1	GND (TX)	---▷	20	GND (RX)
2	TX2n	---▷	21	RX2n
3	TX2p	---▷	22	RX2p
4	GND (TX)	---▷	23	GND (RX)
5	TX4n	---▷	24	RX4n
6	TX4p	---▷	25	RX4p
7	GND (TX)	---▷	26	GND (RX)
13	GND (RX)	◀---	32	GND (TX)
14	RX3p	◀---	33	TX3p
15	RX3n	◀---	34	TX3n
16	GND (RX)	◀---	35	GND (TX)
17	RX1p	◀---	36	TX1p
18	RX1n	◀---	37	TX1n
19	GND (RX)	◀---	38	GND (TX)
20	RX2n	◀---	1	GND (TX)
21	RX2p	◀---	2	TX2n
22	RX2p	◀---	3	TX2p
23	GND (RX)	◀---	4	GND (TX)
24	RX4n	◀---	5	TX4n
25	RX4p	◀---	6	TX4p
26	GND (RX)	◀---	7	GND (TX)
32	GND (TX)	---▷	13	GND (RX)
33	TX3p	---▷	14	RX3p
34	TX3n	---▷	15	RX3p
35	GND (TX)	---▷	16	GND (RX)
36	TX1p	---▷	17	RX1p
37	TX1n	---▷	18	RX1n
38	GND (TX)	---▷	19	GND (RX)
SHIELD		-----▷	SHIELD	

TABLE 2

dr	Tonny Lin	2013/01/24	projection 	mm	size	A3	scale	3:10
eng	Tonny Lin	2013/01/24			ecn no			
chr	Tonny Lin	2013/01/24						
appr	Roger Cheng	2013/01/24	product family	QSFP PLUG	rel level			
	title	QSFP+ (PASSIVE) ASSEMBLY		dwg no	10124176	rev	A	
www.fci.com	cat. no.	-	Product - Customer Drw	sheet 2 of 3				



Copyright FCI.

NOTES:

1- MATERIAL:

CASTINGS: ZINC ALLOY/ COPPER UNDERPLATE/ NICKEL OVERPLATE
 PULL TAB: THERMOPLASTIC POLYMER
 LATCH RELEASE: ZINC DIECAST, NICKEL OVERPLATE
 DRIVE SCREWS: STAINLESS STEEL
 STRAIN RELIEF COLLAR: BRASS
 SPRING: STAINLESS STEEL
 LOCTITE
 PADDLE CARD: PRINTED CIRCUIT SUBSTRATE

2- THIS PRODUCT MEETS THE RESTRICTION OF HAZARDOUS SUBSTANCES IN ELECTRICAL AND ELECTRONIC EQUIPMENT (RoHS) "Directive 2011/65/EU" .

3- THIS DIMENSION "L" IS A FINISHED PRODUCT LENGTH.

4- UNLESS OTHERWISE SPECIFIED ASSEMBLED LENGTH TOLERANCE IS:

L	TOLERANCE
=< 1M	± 25mm
1M-10M	± %2L
>= 10M	+ 0/- %4L

5- ALL CABLE ASSEMBLIES SHALL BE 100% TESTED FOR CONTINUITY AS DEFINED IN WIRING LIST.

6- IMPEDANCE: 100 Ω DIFFERENTIAL.

7- OTHER TESTING PERFORMED AS REQUIRED BY PRODUCT SPECIFICATION: GS-12-622.

8- PACKAGING OF LEAD FREE PRODUCTS MEETS LABELING AND PACKAGING PER SPECIFICATION GS-14-920. PACKAGE CABLE ASSEMBLIES PER GS-14-1272. DUST CAPS ARE TO BE ASSEMBLED PRIOR TO PACKAGING. FCI PACKAGE TRACKING BAG LABEL IS NOLY FOR REFERENCE.

9- A "△" SYMBOL WILL BE NEXT TO ANY DIMENSION, VIEW, OR NOTE WHICH HAS BEEN MODIFIED WITH THE CURRENT DRAWING REVISION. THE CURRENT REVISION WILL BE SHOWN IN THE SYMBOL.

10- HALOGEN FREE RAW CABLE CAN BE USED AS A SUBSTITUTE ON NON-HF PRODUCT NUMBERS.

11- LONGER LENGTH APPLICATIONS REQUIRE HOST SYSTEM PREMPHASIS AND/OR EQUALIZATION.

12- EACH CABLE WILL BE PACKAGED IN A ESD BAG INDIVIDUALLY.

13- LABEL FOR CABLE CONTENTS AS BELOW.

FCI, MADE IN CHINA
 FCI P/N
 REVISION
 SERIAL NUMBER

EXAMPLE →

FCI, MADE IN CHINA
 10124176-3010LF
 REV.A
 CN1323QP103L0001

FONT SHALL BE CLEARLY VISIBLE AND BLACK IN COLOR.
 SERIAL NUMBER IS ONLY USED FOR TRACKING PRODUCT :

CN1323QP103L0001

CN PRESENT MADE IN CHINA
 YYYW(YEAR AND WEEK)
 PRESENT PRODUCT BASE NUMBER(USE "QP")

SEQUENCE NUMBER(0001~9999)
 L IS NON-HALOGEN FREE TYPE
 CABLE AWG(3 IS 28AWG; 4 IS 26AWG; 5 IS 24AWG)
 LENGTH(10 IS 1.0 METER,30 IS 3.0 METERS,ETC)

dr	Tomy Lin	2013/01/24	projection 	mm	size	A3	scale	3:10
eng	Tomy Lin	2013/01/24			ecn no			
chr	Tomy Lin	2013/01/24			product family	QSFP PLUG	rel level	
appr	Roger Cheng	2013/01/24						
		title		QSFP+ (PASSIVE) ASSEMBLY		dwg no		10124176
www.fci.com		cat. no.		-		Product - Customer Drw		sheet 3 of 3
						rev		A



Copyright FCI.