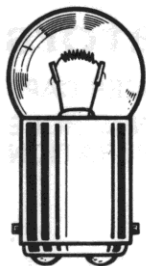


Large Incandescent Indicators

FOR MOUNTING IN 1" CLEARANCE HOLE
FOR 6 TO 32V OPERATION



G-6
DOUBLE CONTACT
BAYONET BASE

See lamp ratings
on page K.

Recognized under the component
program of Underwriters'
Laboratories Inc.
75W., 125V.

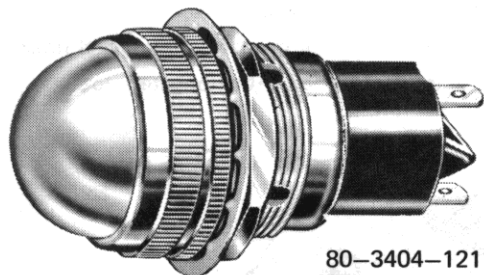


These series indicator lights meet or exceed requirements of MIL-L-3661.

MATERIALS AND FINISHES

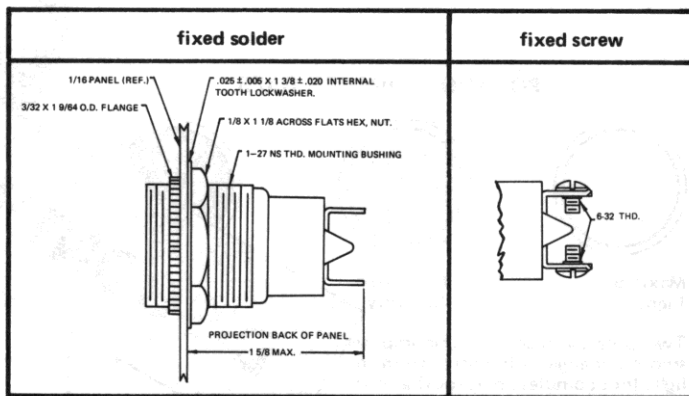
- **Mounting Bushing:** Standard—brass, white nickel finish. Optional—black nickel finish.
- **Lens Holder and Knurled Flange Ring:** Brass, polished chrome finish. Optional—black nickel or satin chrome finish.
- **Mounting Nut:** Brass, white nickel finish.
- **Internal-tooth Lockwasher:** Phosphor bronze, white nickel finish.
- **Terminals:** Solder — brass hot tinned. Screw—brass, white nickel finish. Quick Connect—brass, tinned. Mate with standard female receptacles.

These assemblies are shown with screw-on lens caps. Bayonet lock lens caps are also available. Information will be furnished on request.



80-3404-1211-301
Dome lens

WITH SCREW-ON LENS CAPS



How to designate the three digit part number suffix (-XXX)

Finish	Resistor	Hardware
2 — black nickel	0 — none	1 — brass
3 — polished chrome		3 — water-tight on the face of the panel, (screw-on caps only).
4 — satin chrome		

80 SERIES

BASE PART NUMBERS

CAP PART NUMBERS	COMPLETE ASSEMBLY PART NUMBERS
<p>TORPEDO 80-0511-300 back frosted 80-0531-300 unfrosted</p>	<p>80-3406-05-301</p> <p>80-3206-05-301</p>
<p>DOME 80-1211-300 back frosted 80-1231-300 unfrosted</p>	<p>80-3404-0511-301</p> <p>80-3404-0531-301</p> <p>80-3204-0511-301</p> <p>80-3204-0531-301</p>
<p>TORPEDO FACETED 80-1331-300 unfrosted</p>	<p>80-3404-1211-301</p> <p>80-3404-1231-301</p> <p>80-3204-1211-301</p> <p>80-3204-1231-301</p> <p>80-3404-1331-301</p> <p>80-3204-1331-301</p>

Part numbers shown in gray are normally in inventory at your Dialight Distributor.

Order complete with lamp to be assured of receiving the indicator light and correct lamp together for immediate use.