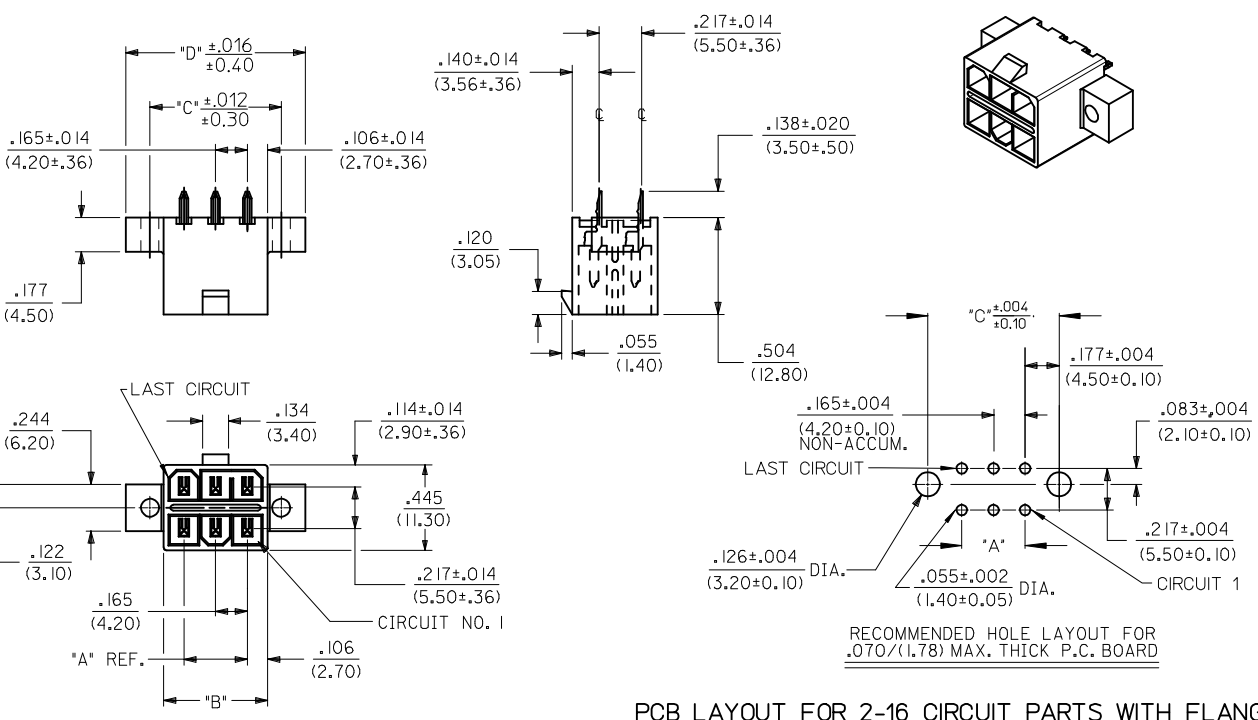
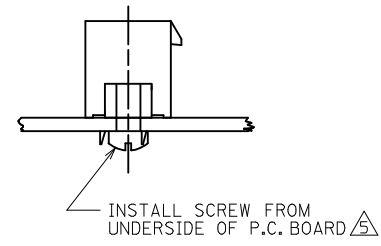


NOTES:

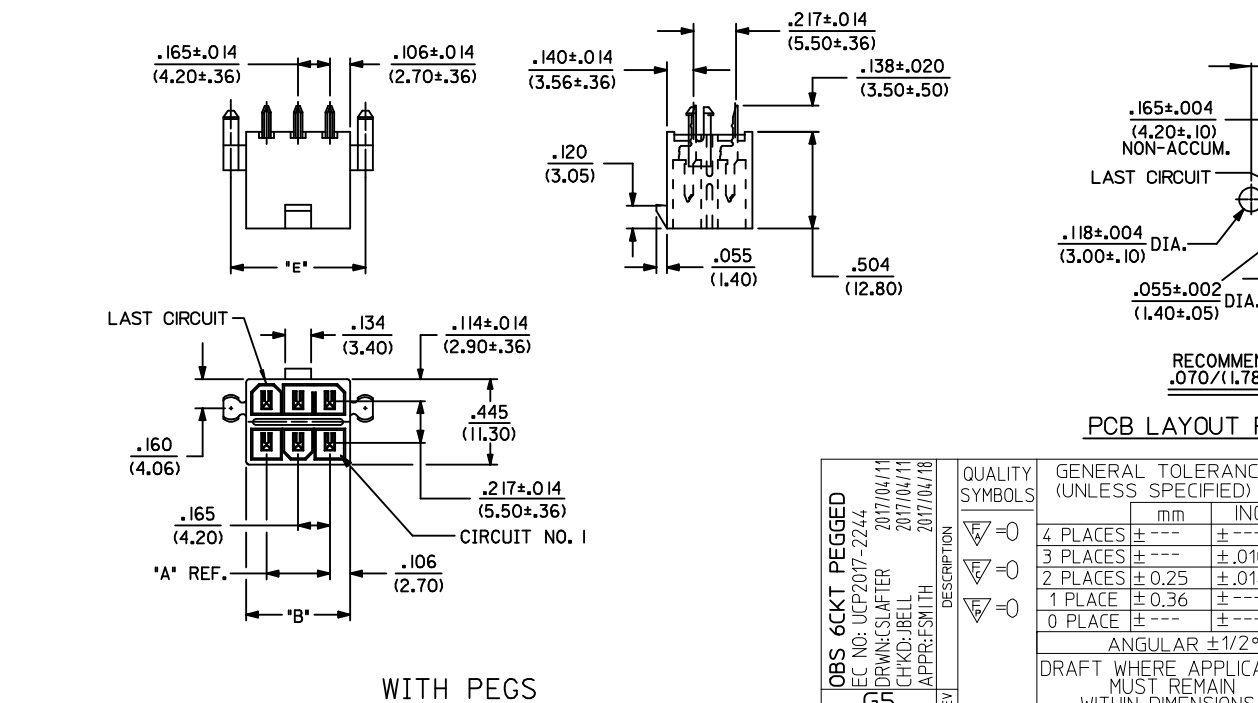
1. HOUSING MAT'L.: POLYESTER, UNFILLED, 94V-0. COLOR: BLACK.
TERMINAL MATERIAL: BRASS ALLOY
2. PLATINGS:
 - 1 = .000035/(.00090) MIN. REFLOWED MATTE TIN OVER
.000020/(.00050) MIN. COPPER (PREPLATE)
(FINISH IS BRIGHT IN APPEARANCE,
THICKNESS AS APPLIED PRIOR TO REFLOW)
 - 2 = .000030/(.00076) MIN. SELECT GOLD AND
.000100/(.00254) MIN. SELECT MATTE TIN OVER
.000050/(.00127) MIN. NICKEL OVERALL.
 - 3 = .000100/(.00254) MIN. MATTE TIN OVER
.000050/(.00127) MIN. NICKEL
3. PRODUCT SPECIFICATION PS-5556-003
4. PACKAGING SPECIFICATION: BULK PER PK-30069-001.
TRAY PER 300690000-PK
5. PART IS DESIGNED FOR USE WITH #4 OR M3 SELF TAPPING SCREWS.
6. PART MATES WITH RECEPTACLE 30067-*
7. THIS PART CONFORMS TO CLASS 'B' REQUIREMENTS OF COSMETIC SPECIFICATION PS-45499-002.



PCB LAYOUT FOR 2-16 CIRCUIT PARTS WITH FLANGES



RECOMMENDED INSTALLATION OF HEADER TO P.C. BOARD



PCB LAYOUT FOR 2-16 CIRCUIT PARTS

WITH PEGS

OBS 6CKT PEGGED EC NO: UCP2017-2244 DRAWNCSLAFER 2017/04/11 CHKD:JBELL 2017/04/11 APPR:FSMITH 2017/04/18 REV: G5	QUALITY SYMBOLS ▽=0 ▽=0 ▽=0	GENERAL TOLERANCES (UNLESS SPECIFIED)		DIMENSION STYLE IN/MM		SCALE 2:1	DESIGN UNITS METRIC	THIRD ANGLE PROJECTION	
		4 PLACES ± --- ± ---		DRAWN BY RJF		DATE 9/19/91		TITLE MINI-FIT T.P.A. VERTICAL HEADER ASSEMBLY	
		3 PLACES ± --- ± .010		CHECKED BY GEP		DATE 9/19/91			
		2 PLACES ± 0.25 ± .014		APPROVED BY FSMITH		DATE 2012/03/08			
		1 PLACE ± 0.36 ± ---		0 PLACE ± --- ± ---		MATERIAL NO. SEE CHARTS		DOCUMENT NO. SDA-30069-****	
ANGULAR ±1/2°		DRAFT WHERE APPLICABLE MUST REMAIN WITHIN DIMENSIONS							

TIN-PLATED ASSEMBLIES WITH PEGS								GOLD-PLATED ASSEMBLIES WITH PEGS						
CKT. SIZE	ENG. NO.	EDP. NO.	DIM. 'A'	DIM. 'B'	DIM. 'E'	DIM. 'D'	PACKAGING	ENG. NO.	EDP. NO.	DIM. 'A'	DIM. 'B'	DIM. 'E'	DIM. 'D'	PACKAGING
2	A-30069-02C1	15-97-7023	—	.213 (5.40)	.370 (9.40)	—	BULK			—	.213 (5.40)	.370 (9.40)	—	BULK
4	A-30069-04C1	15-97-7043	.165 (4.20)	.378 (9.60)	.535 (13.60)	—	BULK	A-30069-04C2	15-97-7045	.165 (4.20)	.378 (9.60)	.535 (13.60)	—	BULK
6			.331 (8.40)	.543 (13.80)	.701 (17.80)	—	BULK			.331 (8.40)	.543 (13.80)	.701 (17.80)	—	BULK
8	A-30069-08C1	15-97-7083	.496 (12.60)	.709 (18.00)	.866 (22.00)	—	BULK	A-30069-08C2	15-97-7085	.496 (12.60)	.709 (18.00)	.866 (22.00)	—	BULK
10	A-30069-10C1	15-97-7103	.661 (16.80)	.874 (22.20)	1.031 (26.20)	—	BULK	A-30069-10C2	15-97-7105	.661 (16.80)	.874 (22.20)	1.031 (26.20)	—	TRAY
12	A-30069-12C1	15-97-7123	.827 (21.00)	1.039 (26.40)	1.197 (30.40)	—	BULK	A-30069-12C2	15-97-7125	.827 (21.00)	1.039 (26.40)	1.197 (30.40)	—	TRAY
14	A-30069-14C1	NOT TOOLED	.992 (25.20)	1.205 (30.60)	1.362 (34.60)	—	BULK	A-30069-14C2	NOT TOOLED	.992 (25.20)	1.205 (30.60)	1.362 (34.60)	—	TRAY
16	A-30069-16C1	NOT TOOLED	1.157 (29.40)	1.370 (34.80)	1.528 (38.80)	—	BULK	A-30069-16C2	15-97-7165	1.157 (29.40)	1.370 (34.80)	1.528 (38.80)	—	TRAY

LEGEND:

A - 30069 - *** ** *

CIRCUIT SIZE
(02-16)

HOUSING STYLE
A = FLANGES
C = PEGS

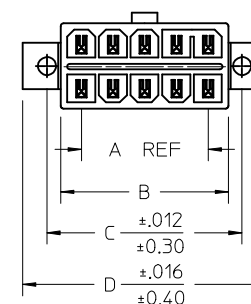
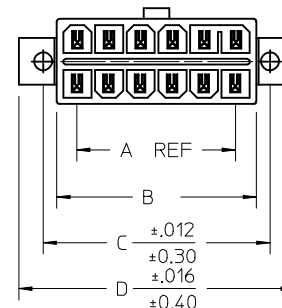
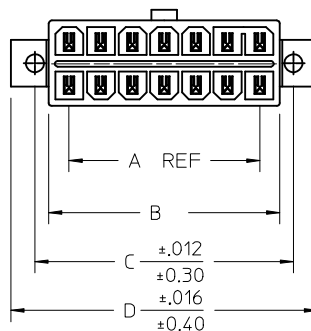
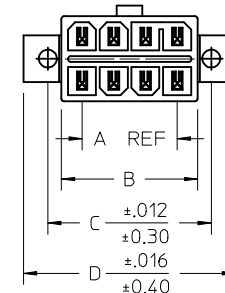
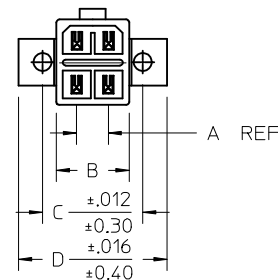
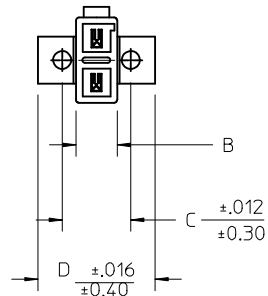
PLATING (SEE SHT. 1, NOTE 2.)
1 = TIN OVER COPPER.
2 = GOLD OVER NICKEL.

TIN-PLATED ASSEMBLIES WITH FLANGES								GOLD-PLATED ASSEMBLIES WITH FLANGES						
CKT. SIZE	ENG. NO.	EDP. NO.	DIM. 'A'	DIM. 'B'	DIM. 'C'	DIM. 'D'	PACKAGING	ENG. NO.	EDP. NO.	DIM. 'A'	DIM. 'B'	DIM. 'C'	DIM. 'D'	PACKAGING
2	A-30069-02A1	15-97-7022	—	.213 (5.40)	.354 (9.00)	.606 (15.40)	BULK	A-30069-02A2	15-97-7024	—	.213 (5.40)	.354 (9.00)	.606 (15.40)	BULK
4	A-30069-04A1	15-97-7042	.165 (4.20)	.378 (9.60)	.520 (13.20)	.772 (19.60)	BULK	A-30069-04A2	15-97-7044	.165 (4.20)	.378 (9.60)	.520 (13.20)	.772 (19.60)	BULK
6	A-30069-06A1	15-97-7062	.331 (8.40)	.543 (13.80)	.685 (17.40)	.937 (23.80)	BULK	A-30069-06A2	15-97-7064	.331 (8.40)	.543 (13.80)	.685 (17.40)	.937 (23.80)	BULK
8	A-30069-08A1	15-97-7082	.496 (12.60)	.709 (18.00)	.850 (21.60)	1.102 (28.00)	BULK	A-30069-08A2	15-97-7084	.496 (12.60)	.709 (18.00)	.850 (21.60)	1.102 (28.00)	BULK
10	A-30069-10A1	15-97-7102	.661 (16.80)	.874 (22.20)	1.016 (25.80)	1.268 (32.20)	BULK	A-30069-10A2	15-97-7104	.661 (16.80)	.874 (22.20)	1.016 (25.80)	1.268 (32.20)	BULK
12	A-30069-12A1	15-97-7122	.827 (21.00)	1.039 (26.40)	1.181 (30.00)	1.433 (36.40)	BULK	A-30069-12A2	15-97-7124	.827 (21.00)	1.039 (26.40)	1.181 (30.00)	1.433 (36.40)	BULK
14	A-30069-14A1	NOT TOOLED	.992 (25.20)	1.205 (30.60)	1.346 (34.20)	1.598 (40.60)	BULK	A-30069-14A2	NOT TOOLED	.992 (25.20)	1.205 (30.60)	1.346 (34.20)	1.598 (40.60)	BULK
16	A-30069-16A1	15-97-7162	1.157 (29.40)	1.370 (34.80)	1.512 (38.40)	1.764 (44.80)	BULK	A-30069-16A2	15-97-7164	1.157 (29.40)	1.370 (34.80)	1.512 (38.40)	1.764 (44.80)	BULK

SEE SHEET 1 EC NO: UCP2017-2244 DRAWN: SLAFTER 2017/04/11 CHKD: J.BELL 2017/04/11 APPR: F.SMITH 2017/04/18 REV: G5	QUALITY SYMBOLS ▽=0 ▽=0 ▽=0	GENERAL TOLERANCES (UNLESS SPECIFIED) <table border="1"> <tr> <th></th> <th>mm</th> <th>INCH</th> </tr> <tr> <td>4 PLACES</td> <td>± .010</td> <td>± .0004</td> </tr> <tr> <td>3 PLACES</td> <td>± .010</td> <td>± .0004</td> </tr> <tr> <td>2 PLACES</td> <td>± 0.25</td> <td>± .010</td> </tr> <tr> <td>1 PLACE</td> <td>± 0.36</td> <td>± .014</td> </tr> <tr> <td>0 PLACE</td> <td>± .010</td> <td>± .0004</td> </tr> </table>		mm	INCH	4 PLACES	± .010	± .0004	3 PLACES	± .010	± .0004	2 PLACES	± 0.25	± .010	1 PLACE	± 0.36	± .014	0 PLACE	± .010	± .0004	DIMENSION STYLE IN/MM DRAWN BY: R.J.F. DATE: 9/19/91 CHECKED BY: GEP DATE: 9/19/91 APPROVED BY: F.S.MITH DATE: 2012/03/08	SCALE: 1:1 DESIGN UNITS: METRIC THIRD ANGLE PROJECTION	TITLE: MINI-FIT T.P.A. VERTICAL HEADER ASSEMBLY	molex	MATERIAL NO. SEE CHART	DOCUMENT NO. SDA-30069-****	SHEET NO. 2 OF 3
		mm	INCH																								
	4 PLACES	± .010	± .0004																								
	3 PLACES	± .010	± .0004																								
2 PLACES	± 0.25	± .010																									
1 PLACE	± 0.36	± .014																									
0 PLACE	± .010	± .0004																									
DRAFT WHERE APPLICABLE MUST REMAIN WITHIN DIMENSIONS		ANGULAR ±1/2°		THIS DRAWING CONTAINS INFORMATION THAT IS PROPRIETARY TO MOLEX INCORPORATED AND SHOULD NOT BE USED WITHOUT WRITTEN PERMISSION																							

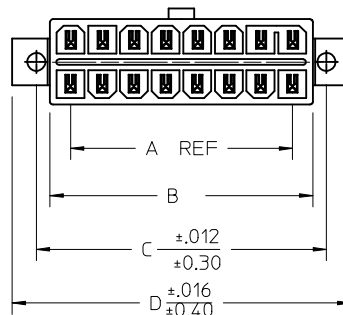
MATTE TIN-PLATED ASSEMBLIES WITH PEGS

CKT. SIZE	MATERIAL NUMBER	DIM. 'A'	DIM. 'B'	DIM. 'E'	DIM. 'D'	PACKAGING
2	30069-0233	—	.213 (5.40)	.370 (9.40)	—	TRAY
4	30069-0433	.165 (4.20)	.378 (9.60)	.535 (13.60)	—	TRAY
6		.331 (8.40)	.543 (13.80)	.701 (17.80)	—	TRAY
8	30069-0833	.496 (12.60)	.709 (18.00)	.866 (22.00)	—	TRAY
10	30069-1033	.661 (16.80)	.874 (22.20)	1.031 (26.20)	—	TRAY
12	30069-1233	.827 (21.00)	1.039 (26.40)	1.197 (30.40)	—	TRAY
14	NOT TOOLED	.992 (25.20)	1.205 (30.60)	1.362 (34.60)	—	TRAY
16	30069-1633	1.157 (29.40)	1.370 (34.80)	1.528 (38.80)	—	TRAY

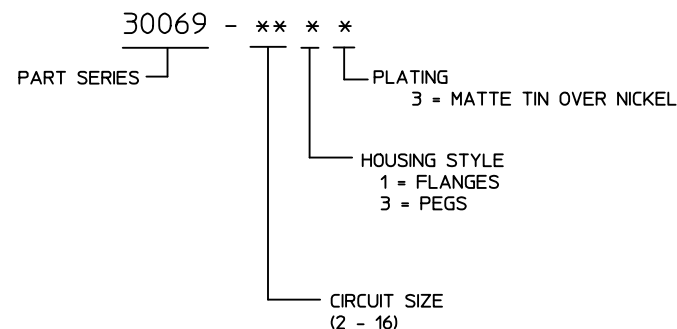


MATTE TIN-PLATED ASSEMBLIES WITH FLANGES

CKT. SIZE	MATERIAL NUMBER	DIM. 'A'	DIM. 'B'	DIM. 'C'	DIM. 'D'	PACKAGING
2	30069-0213	—	.213 (5.40)	.354 (9.00)	.606 (15.40)	TRAY
4	30069-0413	.165 (4.20)	.378 (9.60)	.520 (13.20)	.772 (19.60)	TRAY
6	30069-0613	.331 (8.40)	.543 (13.80)	.685 (17.40)	.937 (23.80)	TRAY
8	30069-0813	.496 (12.60)	.709 (18.00)	.850 (21.60)	1.102 (28.00)	TRAY
10	30069-1013	.661 (16.80)	.874 (22.20)	1.016 (25.80)	1.268 (32.20)	TRAY
12	30069-1213	.827 (21.00)	1.039 (26.40)	1.181 (30.00)	1.433 (36.40)	TRAY
14	NOT TOOLED	.992 (25.20)	1.205 (30.60)	1.346 (34.20)	1.598 (40.60)	TRAY
16	30069-1613	1.157 (29.40)	1.370 (34.80)	1.512 (38.40)	1.764 (44.80)	TRAY



FINISHED PART LEGEND



SEE SHEET 1 EC NO: UCP2017-2244 DRAWN: CLAFER 2017/04/11 CHKD: J.BELL 2017/04/11 APPR: F.SMITH 2017/04/18 G5	QUALITY SYMBOLS ∇=0 ∇=0 ∇=0	GENERAL TOLERANCES (UNLESS SPECIFIED) <table border="1"> <tr> <th></th> <th>mm</th> <th>INCH</th> </tr> <tr> <td>4 PLACES</td> <td>± .010</td> <td>± .0004</td> </tr> <tr> <td>3 PLACES</td> <td>± .012</td> <td>± .0005</td> </tr> <tr> <td>2 PLACES</td> <td>± 0.25</td> <td>± .010</td> </tr> <tr> <td>1 PLACE</td> <td>± 0.36</td> <td>± .014</td> </tr> <tr> <td>0 PLACE</td> <td>± .010</td> <td>± .0004</td> </tr> </table>		mm	INCH	4 PLACES	± .010	± .0004	3 PLACES	± .012	± .0005	2 PLACES	± 0.25	± .010	1 PLACE	± 0.36	± .014	0 PLACE	± .010	± .0004	DIMENSION STYLE IN/MM DRAWN BY DATE R/JF 9/19/91 CHECKED BY DATE GEP 9/19/91 APPROVED BY DATE F/SMITH 2012/03/08	SCALE 1:1 DESIGN UNITS METRIC THIRD ANGLE PROJECTION
		mm	INCH																			
	4 PLACES	± .010	± .0004																			
	3 PLACES	± .012	± .0005																			
2 PLACES	± 0.25	± .010																				
1 PLACE	± 0.36	± .014																				
0 PLACE	± .010	± .0004																				
DRAFT WHERE APPLICABLE MUST REMAIN WITHIN DIMENSIONS		MATERIAL NO. SEE CHART	DOCUMENT NO. SDA-30069-****	SHEET NO. 3 OF 3																		
THIS DRAWING CONTAINS INFORMATION THAT IS PROPRIETARY TO MOLEX INCORPORATED AND SHOULD NOT BE USED WITHOUT WRITTEN PERMISSION																						

MINI-FIT T.P.A.
VERTICAL HEADER ASSEMBLY

molex