

FOIL SHIELD & DRAIN WIRE

Shielded to provide protection against electromagnetic interference and crosstalk between cables and also fitted with Copper Clad Aluminum Drain wire for proper shielded termination. Perfect for noisy environments.

HIGH QUALITY TWISTED PAIRS

Twisted pair data cable with 4 pairs of stranded conductors plus drain wire provide a solid foundation for any commercial or home network. Supports speeds of up to Gigabit Ethernet. The stranded conductors increase the flexibility of the cable but decrease the maximum length for a single cable run.

Applications:

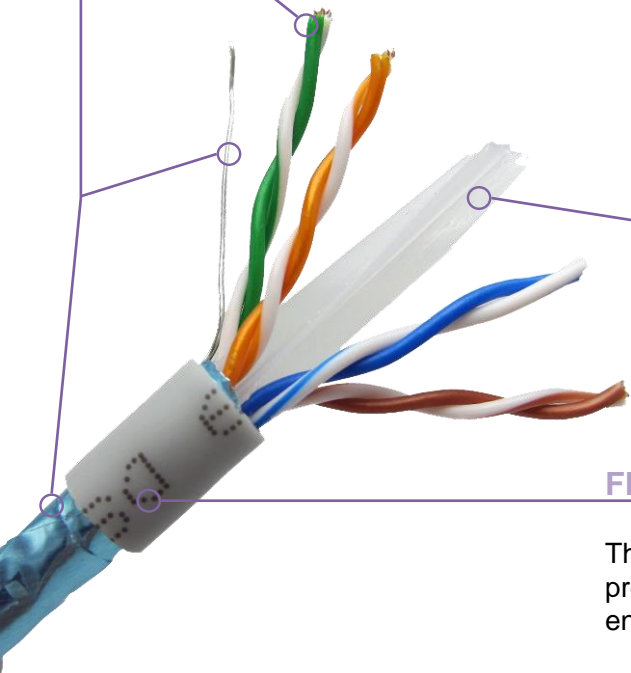
- 100 BaseT4
- 100 BaseTX
- 1000BaseT (Gigabit Ethernet)
- 155mbps ATM
- 622MBps ATM
- HDBaseT
- 100BaseVG ANYLAN
- NTSC/PAL
- Component/Composite Video
- AES/EBU
- Digital Video
- RS-422
- Noisy Environments
- 250 MHz Category 6

INTERNAL SEPARATOR

4-way separator, keeps pairs from rubbing against each other while preventing crosstalk between them.

FLEXIBLE PVC JACKET

The Cat6 wire comes complete with a matte PVC jacket that protects the interior workings of the cable from the harsh environment. Including crosstalk between cables.



Product specifications may change without prior notification

Configuration



Product

Part number IO-E4242S-6CMR-1000B
 Number of Conductors 8 (4 Twisted Pairs) plus drain wire

Conductors

Details Bare Copper
 Size 24 AWG
 OD 7*0.12mm

Insulation

Material HDPE
 Thickness 0.62mm
 OD 0.88-0.90mm
 Colors White/Orange, Orange, White/Green, Blue, White/Blue, Green, White/Brown, Brown

Shields

Transparent Paper, Aluminum Foil

Drain Wire

0.40mm CCA

Flammability Grade

CMX, CM, CMR

Jacket

O.D. 6.0+/-0.2mm
 Material PVC
 Color Black
 Thickness 0.6-0.65mm

Electrical and Mechanical

Characteristics

DC Resistance (Max.) 9.5Ω/100m
 Working Capacitance (Max.) 5.4nF/100m
 Insulation Resistance 10000MΩ.km
 Transmission Velocity 65%
 Operating Temperature -20°C ~ +75°C (-4°F ~ +167°F)

PART NUMBER BREAKDOWN:

IO-E4261S-5ECMR-1000B
 E FOR ETHERNET

IO-E4261S-5ECMR-1000B
 4 TWISTED PAIRS

IO-E4261S-5ECMR-1000B
 AWG

IO-E4261S-5ECMR-1000B
 1 FOR SOLID OR 2 FOR STRANDED

IO-E4261S-5ECMR-1000B
 SHIELDED

IO-E4261S-5ECMR-1000B
 5E OR 6 FOR CAT 5E OR CAT6

IO-E4261S-5ECMR-1000B
 CM FOR INWALL RATING OR P FOR PLENUM

IO-E4261S-5ECMR-1000B
 LENGTH IN FEET

IO-E4261S-5ECMR-1000B
 B FOR BOX

Product specifications may change without prior notification

