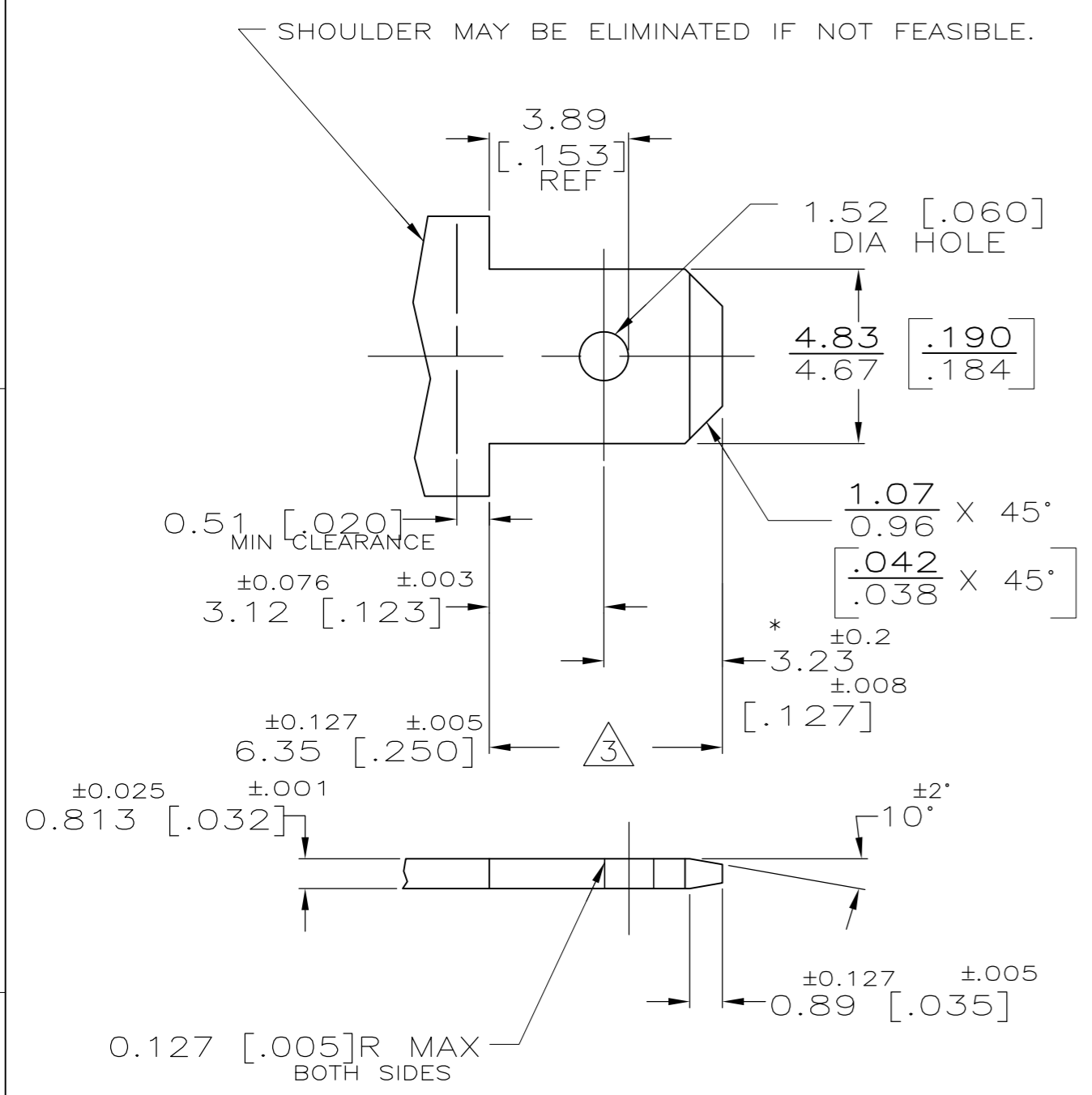


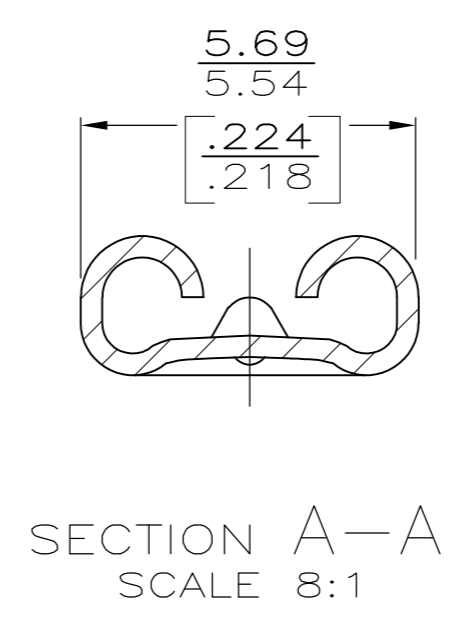
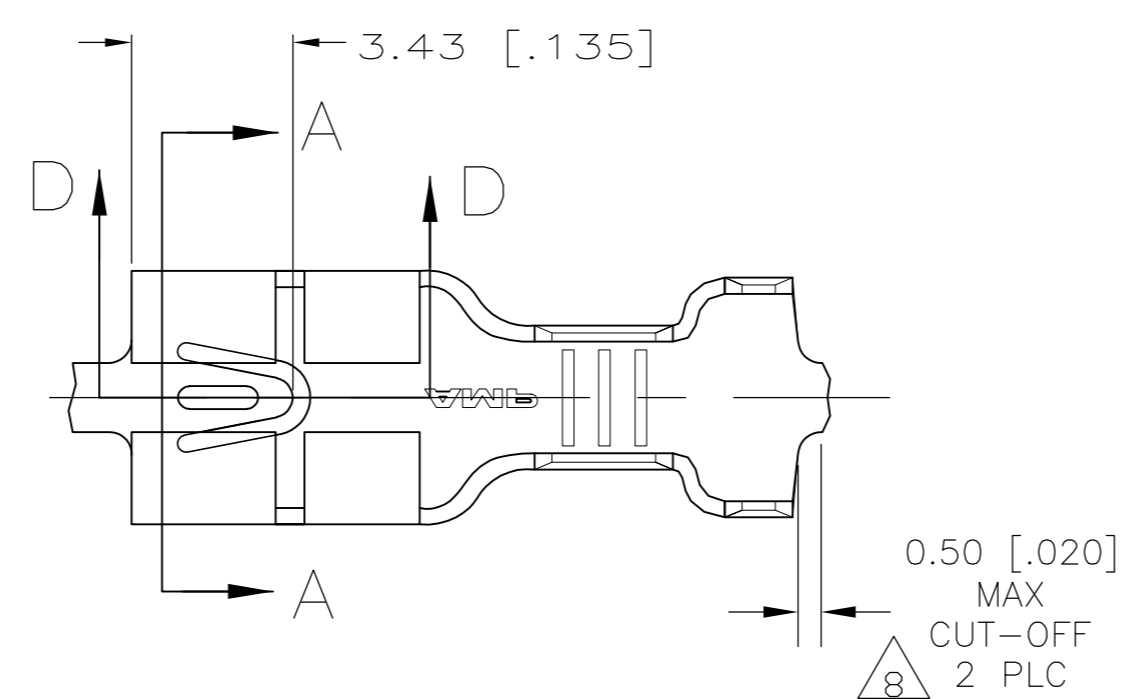
THIS DRAWING IS UNPUBLISHED. RELEASED FOR PUBLICATION  
 © COPYRIGHT - By - ALL RIGHTS RESERVED.

LOC	DIST	REVISIONS					
AF	50	P	LTR	DESCRIPTION	DATE	DWN	APVD
		M7		REV PER ECO 13-001821	31JAN13	JR	PD

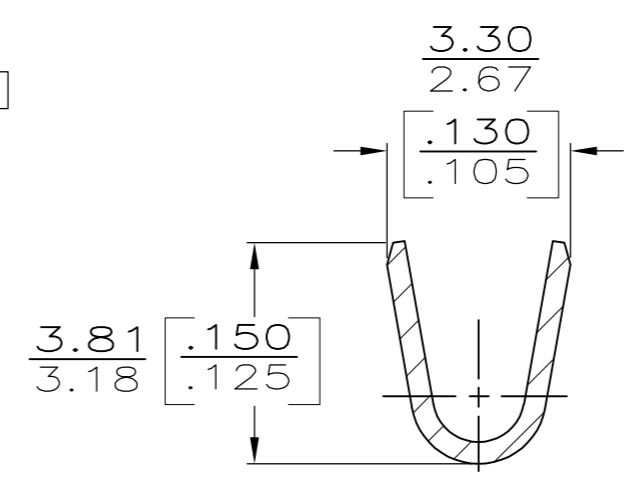
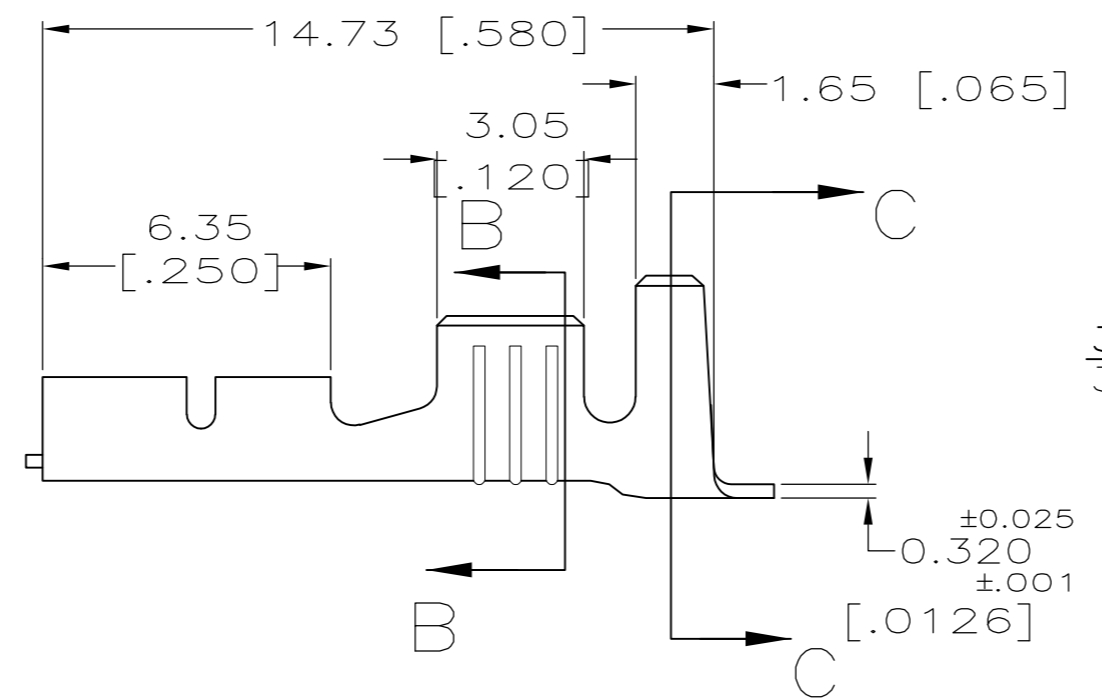
### SUGGESTED MATING TAB



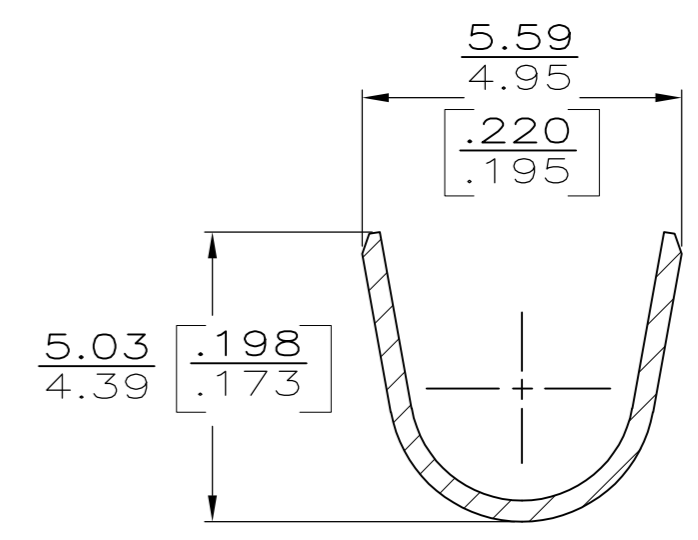
- 1 - MATL: 1/2H BRASS OR NICKEL PL STEEL.
  - 2 - NO BURRS PERMISSIBLE AT HOLE.
  - 3 - MUST BE FLAT WITHIN 0.076 [0.003] OVER THIS LENGTH.
  - 4 - HOLE MUST BE SYMMETRICAL ABOUT TAB Q̄ WITHIN 0.076 [0.003]
- \* TO BE USED ONLY WHEN SHOULDER IS ELIMINATED.



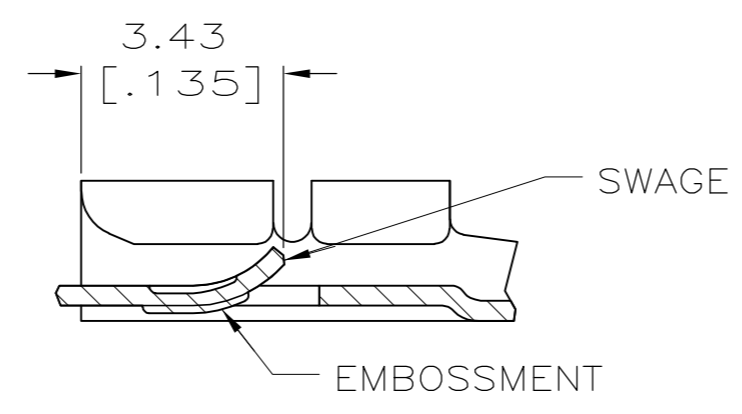
SECTION A-A  
SCALE 8:1



SECTION B-B  
SCALE 8:1



SECTION C-C  
SCALE 8:1



SECTION D-D  
SCALE 8:1

7	LOOSE PIECE	8	BRASS	9	1-63606-6
7	LOOSE PIECE	---	BRASS	9	1-63606-5
7	LOOSE PIECE	2	BRASS	9	1-63606-4
		8	BRASS	9	63606-6
		---	BRASS		63606-5
		2	BRASS		63606-4
		2	#4 PHOS BRONZE	4	63606-3
					63606-2
					63606-1
	F2DU14474AA				
	FORD P/N	FINISH	MATERIAL		PART NO.

TYPE	WIDTH	STRIP LENGTH	TYPE	WIDTH	WIRE HEIGHT	WIRE
F	4.57 [0.180]	4.78 [0.188]	F	2.29 [0.090]	±0.051 [±0.002]	2.0mm <sup>2</sup> [14]
						1.3mm <sup>2</sup> [16]
						0.8mm <sup>2</sup> [18]

TYPE	WIDTH	STRIP LENGTH	TYPE	WIDTH	WIRE HEIGHT	WIRE
INSUL BARREL CRIMP		±0.38 [±0.015]	WIRE BARREL CRIMP			

THIS DRAWING IS A CONTROLLED DOCUMENT.

DWN	JR RUTH	2/25/91
CHK	MS FEHER	2/25/91
APVD	J GILLESPIE	2/25/91

TE Connectivity

RECPT, FASTON, LOCK-ON, 4.75 [0.187] SERIES

SIZE	A2	CAGE CODE	00779	DRAWING NO	C=63606
WEIGHT	-	RESTRICTED TO	-	SCALE	6:1
CUSTOMER DRAWING		SHEET	1 of 1	REV	M7