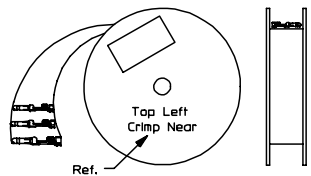
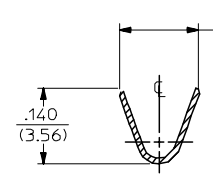
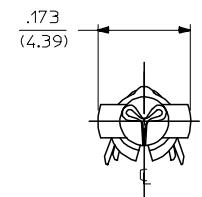


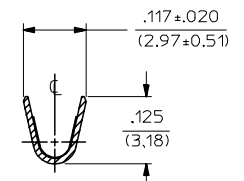
| PART NO. | ENG. NO. |
|------------|---------------|
| 02-09-2118 | 1380-(P901)L |
| 02-09-2116 | 1380-(P901) |
| 02-09-2127 | 1380-(P901)1 |
| 02-09-6126 | 1380-(591)L |
| 02-09-6125 | 1380-(591) |
| 02-09-6123 | 1380-(550)L |
| 02-09-6122 | 1380-(550) |
| 02-09-2119 | 1380-A(P901)L |
| 02-09-2117 | 1380-A(P901) |



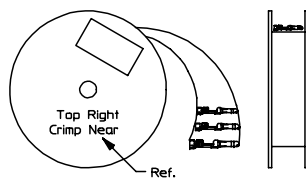
REWOUND CHAIN



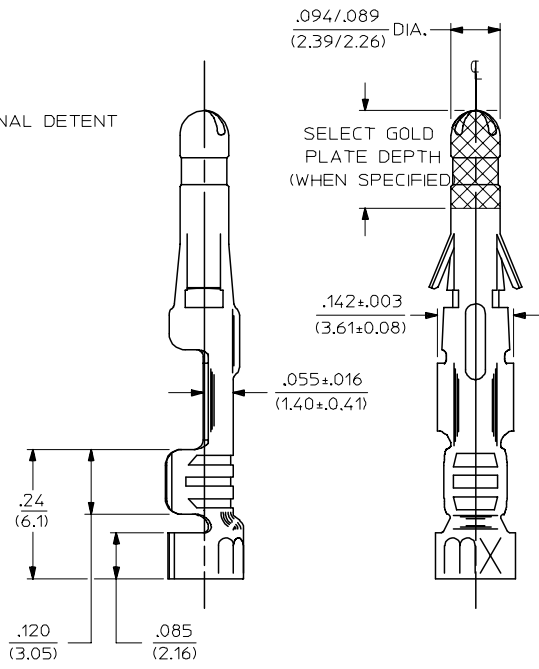
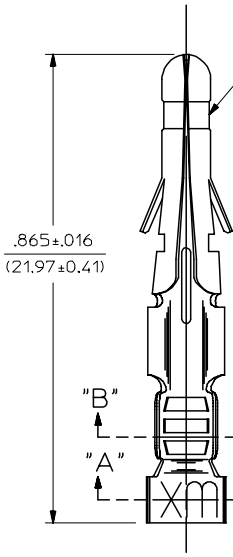
SECT. "A-A"



SECT. "B-B"



STANDARD CHAIN



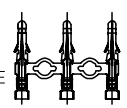
LEGEND

1380-*(***)*
 OPTIONAL DETENT
 BLANK = WITH DETENT
 A = WITHOUT DETENT
 P = PREPLATE
 BLANK = POSTPLATE
 FORM
 BLANK = STD. CHAIN
 A = REWOUND CHAIN
 L = LOOSE
 1 = STD. CHAIN WITH INTERLEAF PAPER
 FINISH CODE
 (SEE NOTE 2)

NOTES:

- MATERIAL: BRASS
- FINISH:
 - 999 UNPLATED
 - 901 HOT TIN DIP .000020/(0.00051) MIN.
 - 591 SELECT GOLD PLATE .000050/(0.00127) MIN. IN CONTACT AREA, OVER .000050/(0.00127) MIN. NICKEL OVERALL WITH .000010/(0.00025) MAX. GOLD FLASH OVERALL.
 - 550 SELECT GOLD PLATE .000015/(0.00038) MIN. IN CONTACT AREA, OVER .000030/(0.00076) MIN. NICKEL OVERALL WITH .000010/(0.00025) MAX. GOLD FLASH OVERALL.
- PRODUCT SPECIFICATION: PS-02-09.
- PACKAGING INFORMATION: NOT AVAILABLE
- TERMINAL FOR USE WITH .093/(2.36) SERIES HOUSINGS AND WILL ACCEPT 18 THRU 22 AWG
- INSERTION FORCE: 3.5 LBS. MAX. WHEN TERMINAL IS INSERTED INTO AN .093 SERIES HOUSING.
- TERMINAL RETENTION: 20 LBS. MIN. FROM HOUSING.

CHAIN FORM FULL SCALE



| | | | | | | |
|---|------------------|--|---------------------------|-------------------|--|--------------------|
| REVISED/REDRAWN EC NO: UCP2004-2354 DRAWN:RHOLTS 2005/07/20 CHKD:FSMITH 2005/07/20 APPR:FSMITH 2005/07/20 BV | QUALITY SYMBOLS | GENERAL TOLERANCES (UNLESS SPECIFIED) | SCALE 6:1 | DESIGN UNITS INCH | THIRD ANGLE PROJECTION | REVISE ON CAD ONLY |
| | DESCRIPTION | mm | DIMENSION STYLE IN/MM | | TITLE CRIMP TERMINAL .093 DIA., MALE FOR 18 THRU 22 AWG. WIRE | |
| | | INCH | DRAWN BY DATE | | | |
| | | 4 PLACES ±.010 ±.010 3 PLACES ±.010 ±.010 2 PLACES ±0.25 ±.14 1 PLACE ±0.35 ±.010 | GEP 1987/11/06 | | | |
| ANGULAR ±1/2° | CHECKED BY DATE | | MOLEX MOLEX INCORPORATED | | | |
| DRAFT WHERE APPLICABLE | APPROVED BY DATE | | MATERIAL NO. DOCUMENT NO. | | | |
| MUST REMAIN WITHIN DIMENSIONS | RAS 1987/11/06 | | SEE CHART SD-1380-* | | | |
| THIS DRAWING CONTAINS INFORMATION THAT IS PROPRIETARY TO MOLEX INCORPORATED AND SHOULD NOT BE USED WITHOUT WRITTEN PERMISSION | | | SHEET NO. 1 OF 1 | | | |