




## HARTING RJ Industrial® RJ45 jacks for direct device integration

### Advantages

- Compact design
- Category of transmission Cat. 5
- Suitable for PoE (IEEE 802.3af) and PoE+ (IEEE 802.3at)
- Temperature range -40 °C ... +70 °C

### Technical characteristics

Locking	RJ45 acc. to IEC 60603-7
Number of contacts	8
Degree of protection	IP20
Rated voltage	125 V AC
Rated current	1.5 A
Mating face	RJ45 acc. to IEC 60603-7
Mating cycles	min. 750
	UL approval

Identification	Part number	Drawing	Dimensions in mm
----------------	-------------	---------	------------------

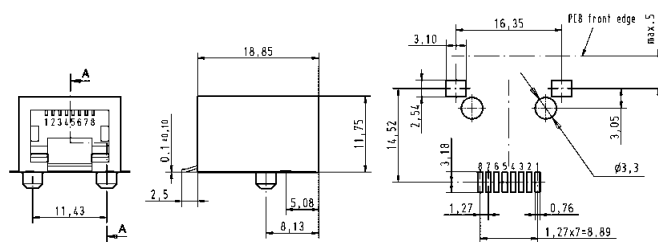
#### Components device side

#### RJ45 jack (low profile)

Solder variant SMD,  
90° angled

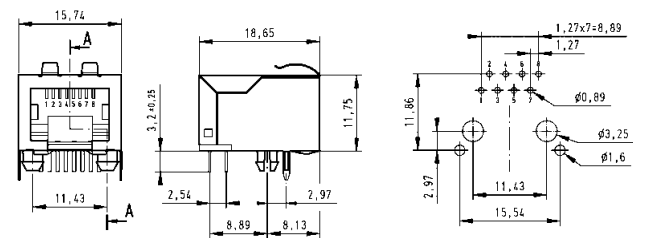
09 45 551 1100<sup>1)</sup>  
09 45 551 1110<sup>2)</sup>

#### PCB layout, component side



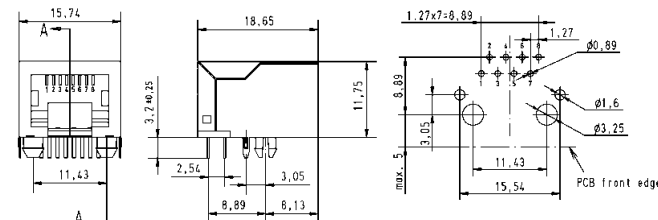
Solder variant THT,  
90° angled  
with EMC contacts

09 45 551 1101<sup>1)</sup>



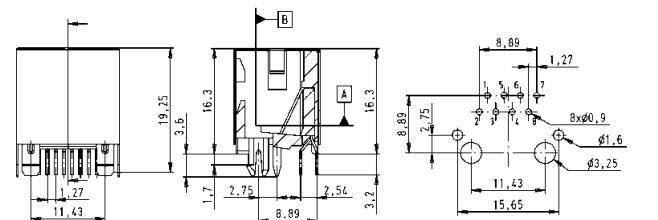
Solder variant THT,  
90° angled

09 45 551 1102<sup>1)</sup>



Solder variant THT,  
vertical

09 45 551 1103<sup>3)</sup>



1) Packaging: Blister à 120 pieces  
2) Packaging: Tape & Reel à 130 pieces  
2) Packaging: Blister à 80 pieces