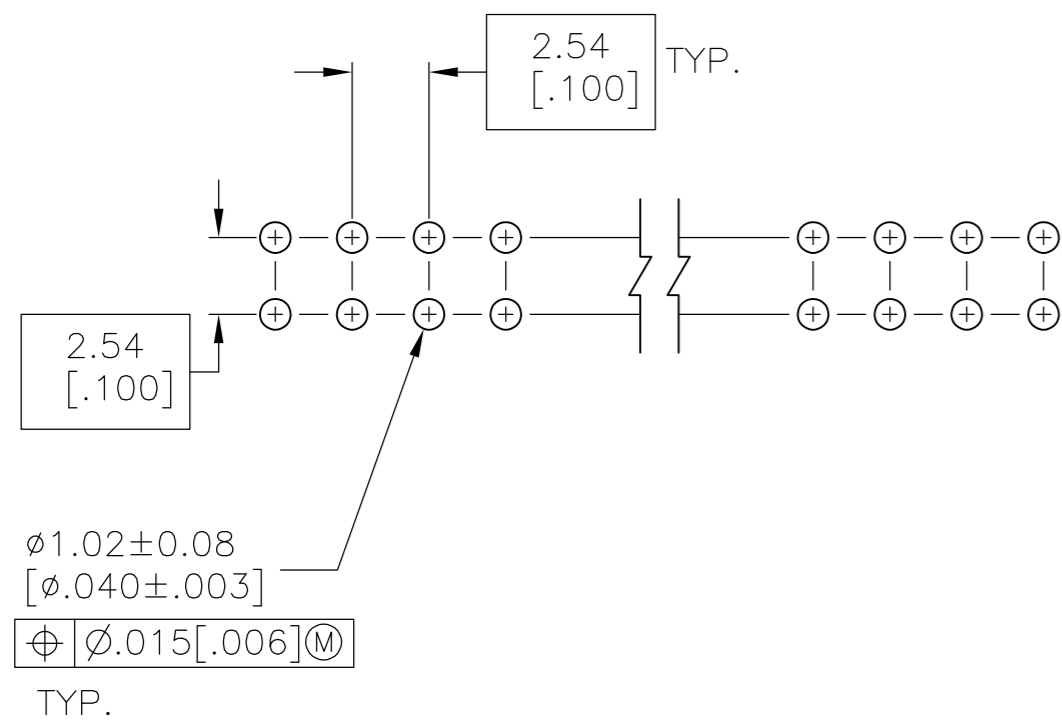
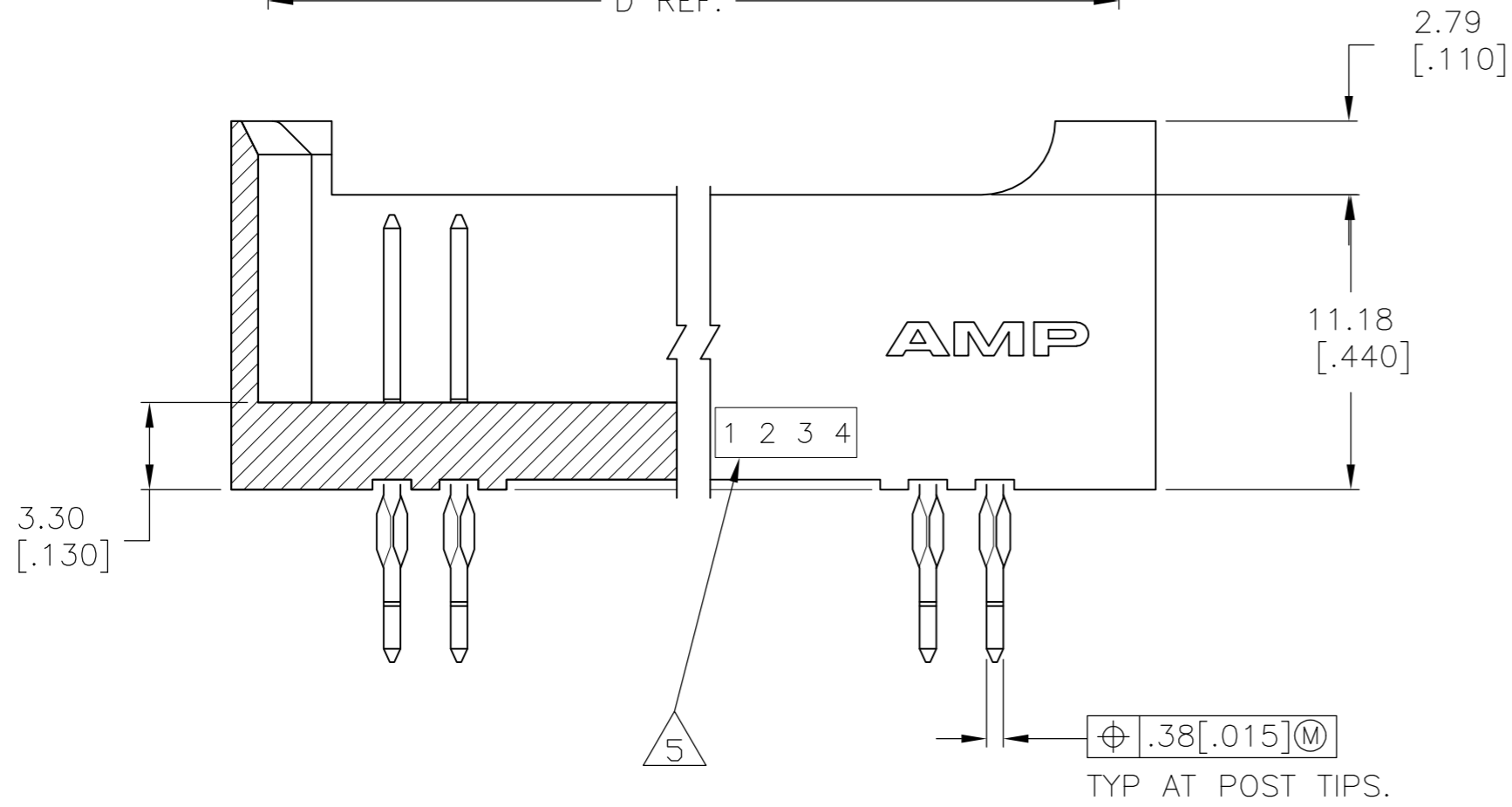
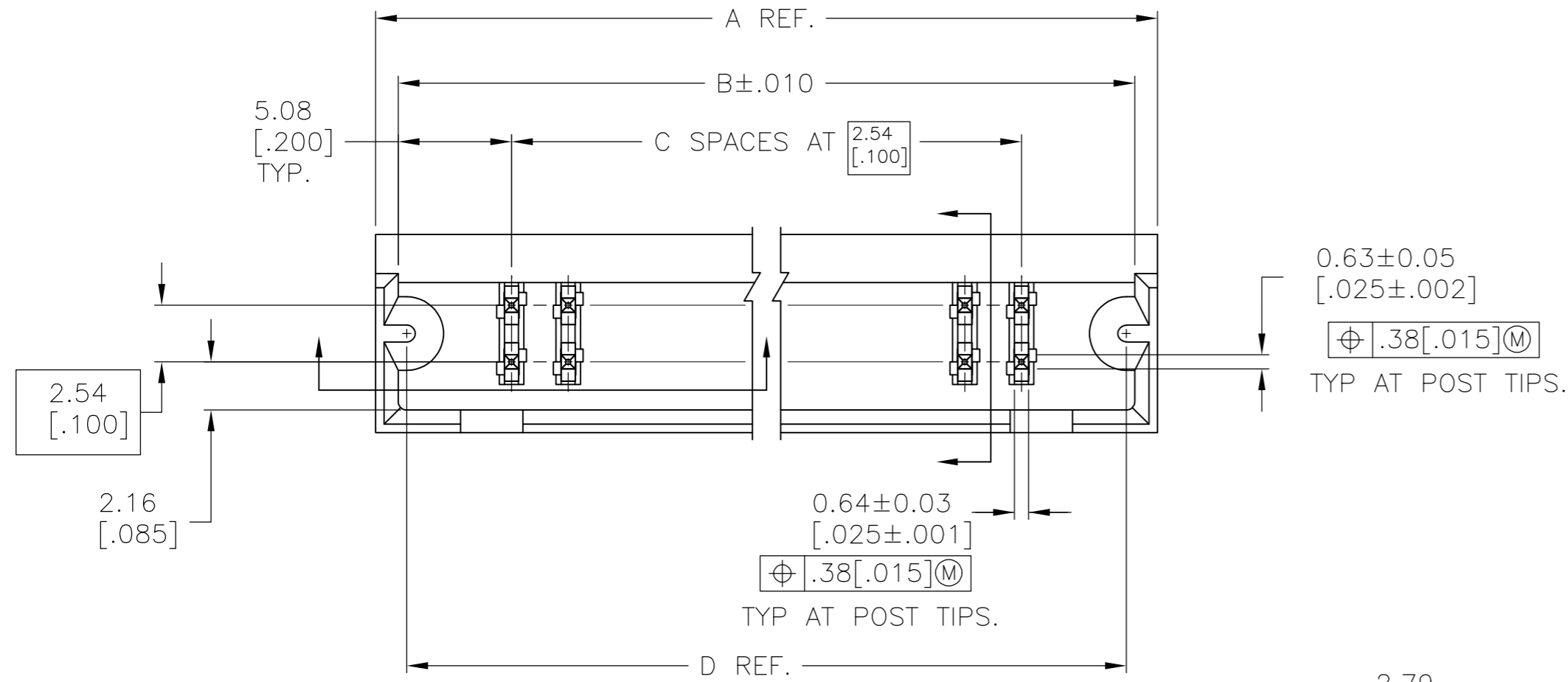
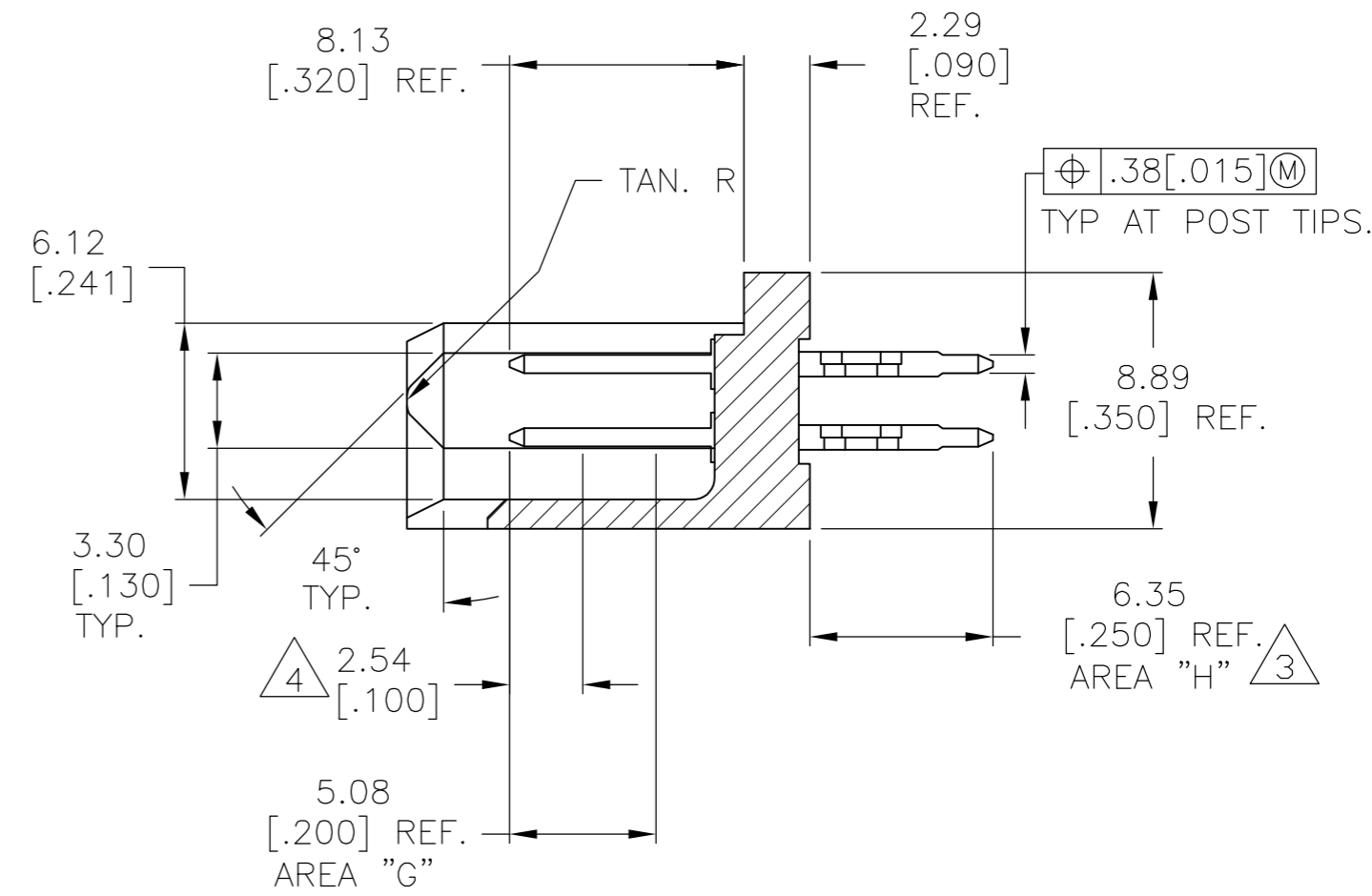


THIS DRAWING IS UNPUBLISHED. RELEASED FOR PUBLICATION
 © COPYRIGHT - By - ALL RIGHTS RESERVED.

LOC		DIST		REVISIONS			
P	LTR	DESCRIPTION		DATE	DWN	APVD	
AD	25	B2	REVISED PER ECO-12-019332		07NOV12	KH	JO



GAGE REQUIREMENTS



- $\triangle 1$ FLAME RETARDANT THERMOPLASTIC, COLOR; BLACK
- $\triangle 2$ COPPER ALLOY
- $\triangle 3$.00038[.000015] GOLD OVER .00127[.000050] NICKEL AT AREA "G"
.00254[.000100]-.00508[.000200] BRIGHT TIN-LEAD OVER
.00127[.000050] NICKEL AT AREA "H"
- $\triangle 4$ POINT OF MEASUREMENT FOR PLATING THICKNESS
- $\triangle 5$ RECESSED DATE CODE
- $\triangle 6$ OBSOLETE PARTS: OBSOLETE CIS STREAMLINING PER D.RENAUD/D.SINISI
- $\triangle 7$ ROHS 2002/95/EC COMPLIANT
- $\triangle 8$ POST FINISH: 0.00038[.000015] GOLD OVER 0.00127 [.000050] NICKEL AT AREA G, 0.00254-0.00508 [.000100-.000200] MATTE TIN OVER 0.00127 [.000050] NICKEL IN AREA H.

$\triangle 7$	$\triangle 8$	44.96 [1.770]	14	45.72 [1.800]	47.75 [1.880]	30	5-535611-2
	$\triangle 3$	44.96 [1.770]	14	45.72 [1.800]	47.75 [1.880]	30	535611-2
$\triangle 6$ OBSOLETE	$\triangle 3$	70.36 [2.770]	24	71.12 [2.800]	73.15 [2.880]	50	535611-1
		FINISH	D	C	B	A	NO OF POSN PART NUMBER

THIS DRAWING IS A CONTROLLED DOCUMENT.		DWN	J MOSER	5/4/92	TE Connectivity		
DIMENSIONS: mm [INCHES]		CHK	D SARVER	5/4/92			
TOLERANCES UNLESS OTHERWISE SPECIFIED:		APVD	D SARVER	5/4/92	NAME		
0 PLC ± - 1 PLC ± - 2 PLC ± - 3 PLC ± 127[.005] 4 PLC ± - ANGLES ± -		PRODUCT SPEC		HDR ASSY, MOD II, DBL ROW .100 X .100 CL, .025 SQ ACTION PIN POSTS			
MATERIAL HOUSING: $\triangle 1$		FINISH		APPLICATION SPEC		SIZE	
CONTACT: $\triangle 2$		SEE TABLE		WEIGHT		CAGE CODE	
				CUSTOMER DRAWING		DRAWING NO	
				SCALE		RESTRICTED TO	
				4:1		A2 00779 C=535611	
				SHEET		REV	
				1 OF 1		B2	