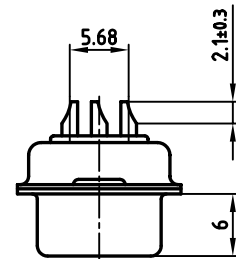
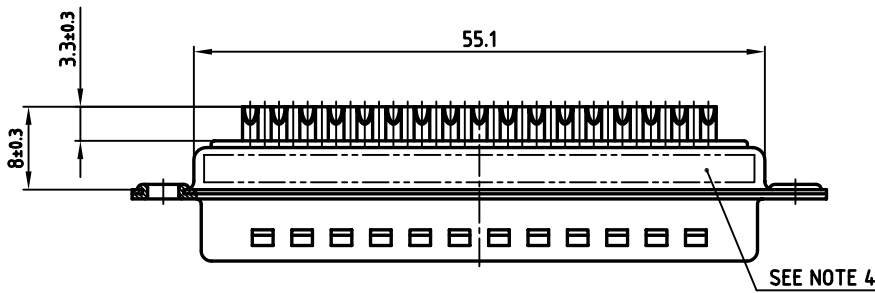
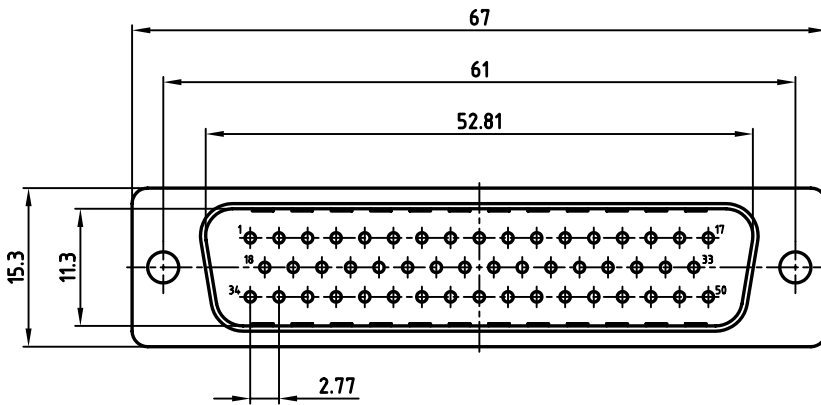


used for: D-SUB



**NOTES:**

1. METALSHELLS: STEEL; min. 320µ" TIN
2. INSULATORS: PBT GF UL 94 V-0, BLACK
3. CONTACTS: COPPER ALLOY  
PLATING: 8µ" HARD GOLD OVER min. 50µ" NICKEL
4. CONNECTOR IS PART MARKED: 301A10079X CONEC Y/WW



APPROVAL * FREIGABE * DEBLOCAGE * AUTORIZACION * APPROVAL	
CUSTOMER APPROVAL DATE:	
NAME:	TITLE:
COMPANY NAME:	
APPROVAL * FREIGABE * DEBLOCAGE * AUTORIZACION * APPROVAL	

THIS DRAWING MAY NOT BE COPIED OR REPRODUCED IN ANY WAY, AND MAY NOT BE PASSED ON TO A THIRD PARTY, WITHOUT WRITTEN PERMISSION. OWNERSHIP AND COPYRIGHT OF CONEC GmbH. DO NOT ALTER CAD DRAWING BY HAND

rev.	description	date	name

tolerance		dim. in mm
2003	date	
drawn	27.05.	name
appd.	27.05.	Lehmenkühler
norm		Kühle
d-old		
<b>CONEC</b> ®		

scale:	2:1	
material:	SEE NOTES	
title:	<b>D-SUB MALE</b> 50pos. SOLDER CUP with stamped contacts	
dwg no:	AutoCAD 2000	DIN-A
	16K1A961	3
		sh: 1/1
part no:	301A10079X	