

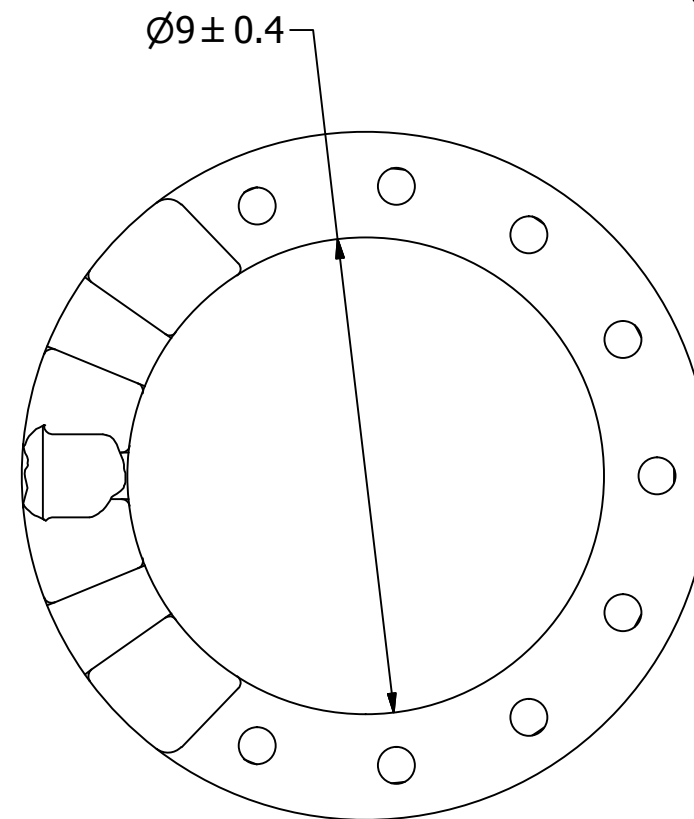
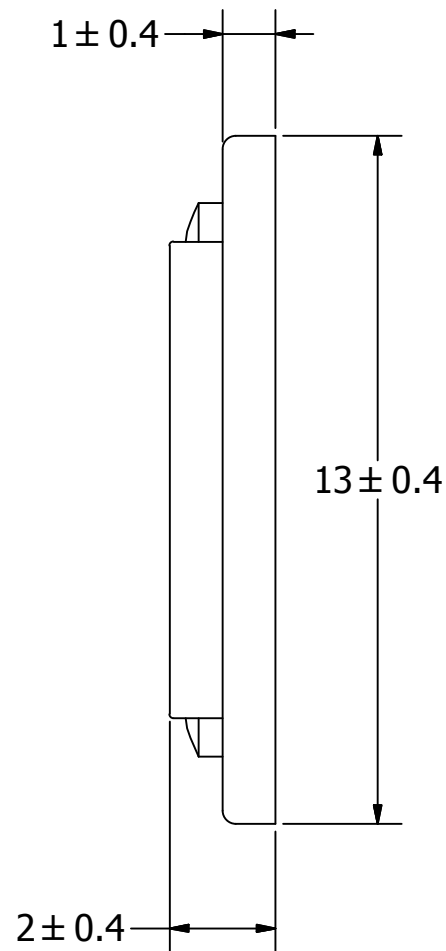
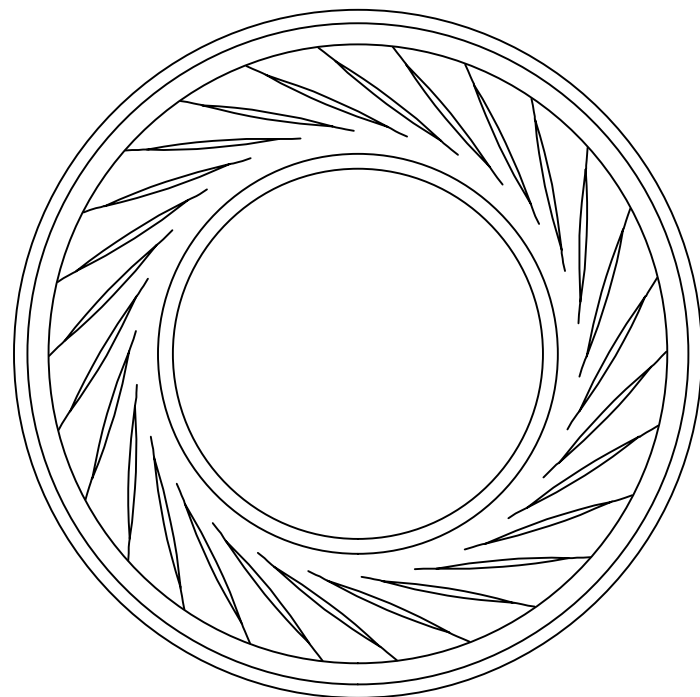
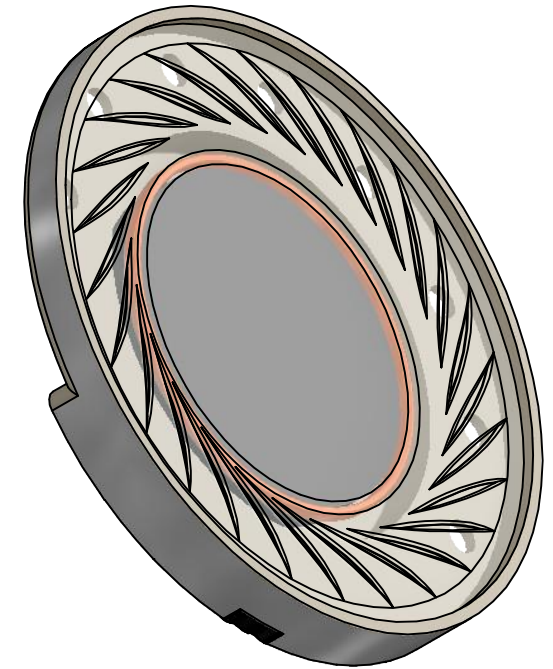
# SPECIFICATIONS

PARAMETERS	VALUES	UNITS
RATED INPUT POWER	0.4	W
MAX INPUT POWER	0.6	W
IMPEDANCE	8 ± 15%	OHM
OUTPUT SPL @ 0.4W/0.1M (AT 1.5, 2.0, 2.5, 3.0 kHz)	89 ± 3	dB
DISTORTION (MAX.)	10%	-
RESONANT FREQUENCY	1,050 ± 20%	Hz
FREQUENCY RANGE	1,050 ~ 20,000	Hz
HOUSING MATERIAL	METAL	-
CONE MATERIAL	MYLAR	-
MAGNET MATERIAL	NdFeB	-
OPERATING TEMPERATURE	-20 ~ +55	°C
WEIGHT	0.71	grams

THIS DOCUMENT CONTAINS DATA PROPRIETARY TO PROJECTS UNLIMITED, INC. ANY USE OR REPRODUCTION, IN ANY FORM, WITHOUT PRIOR WRITTEN PERMISSION OF PROJECTS UNLIMITED, INC. IS PROHIBITED.  
©2003, Projects Unlimited Inc.


# REVISION HISTORY

LTR	DESCRIPTION	DATE	APPROVED
-	RELEASED BY ENGINEERING	7/14/16	



## NOTES:

1. ALL DIMENSIONS ARE IN MILLIMETERS.
2. SPECIFICATIONS SUBJECT TO CHANGE OR WITHDRAWL WITHOUT NOTICE.
3. THIS PART IS RoHS 2011/65/EU COMPLIANT.

UNLESS OTHERWISE SPECIFIED: DIMENSIONS ARE IN MILLIMETERS, TOLERANCES ARE ±0.5 AND ANGLES ARE ±3°.	SIZE <b>A3</b>	Designed by	Date	Checked by	Date	Approved by	Date	Drawn Date
		M.V.	7/14/2016	M.V.	7/14/2016	B.R.	7/14/2016	7/14/2016
AS01308MR-5-R.idw				<b>AS01308MR-5-R</b>			Edition: - Sheet: 1 / 1	