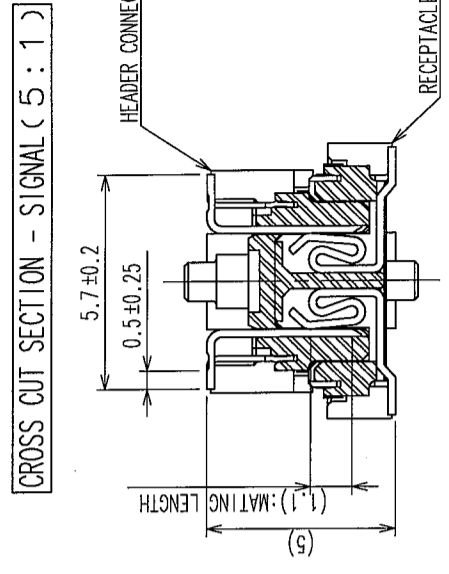
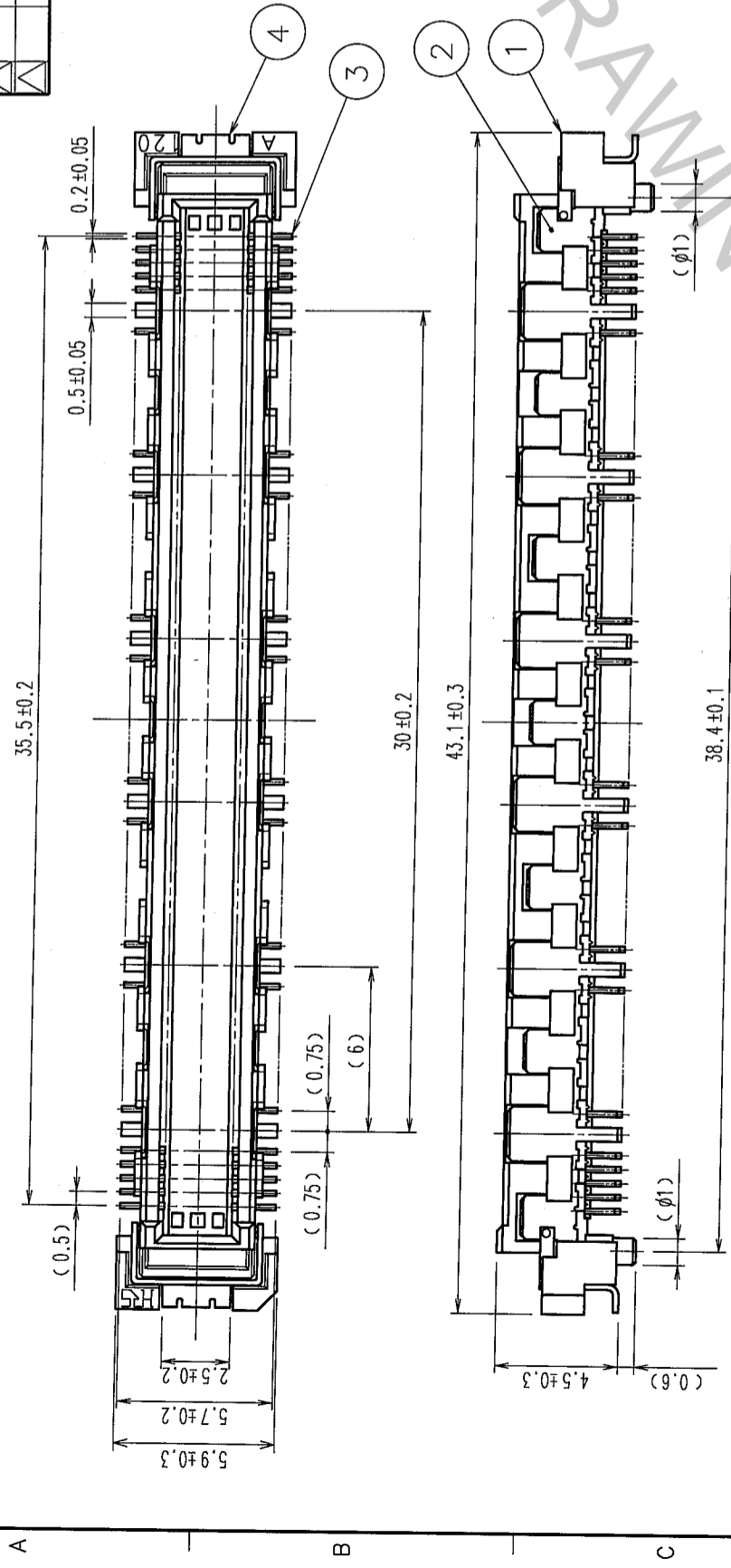
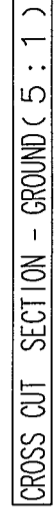
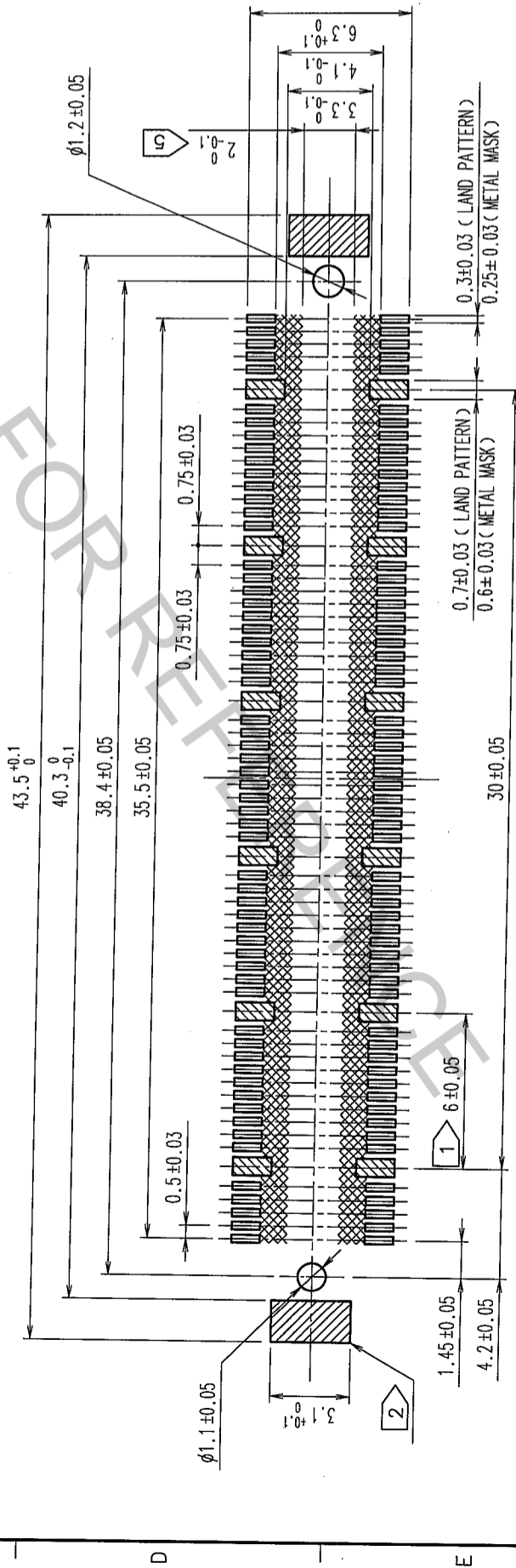


COUNT	DESCRIPTION OF REVISIONS	BY	CHKD	DATE	COUNT	DESCRIPTION OF REVISIONS	BY	CHKD	DATE



RECOMMENDED LAND PATTERN DIMENSION OF PCB

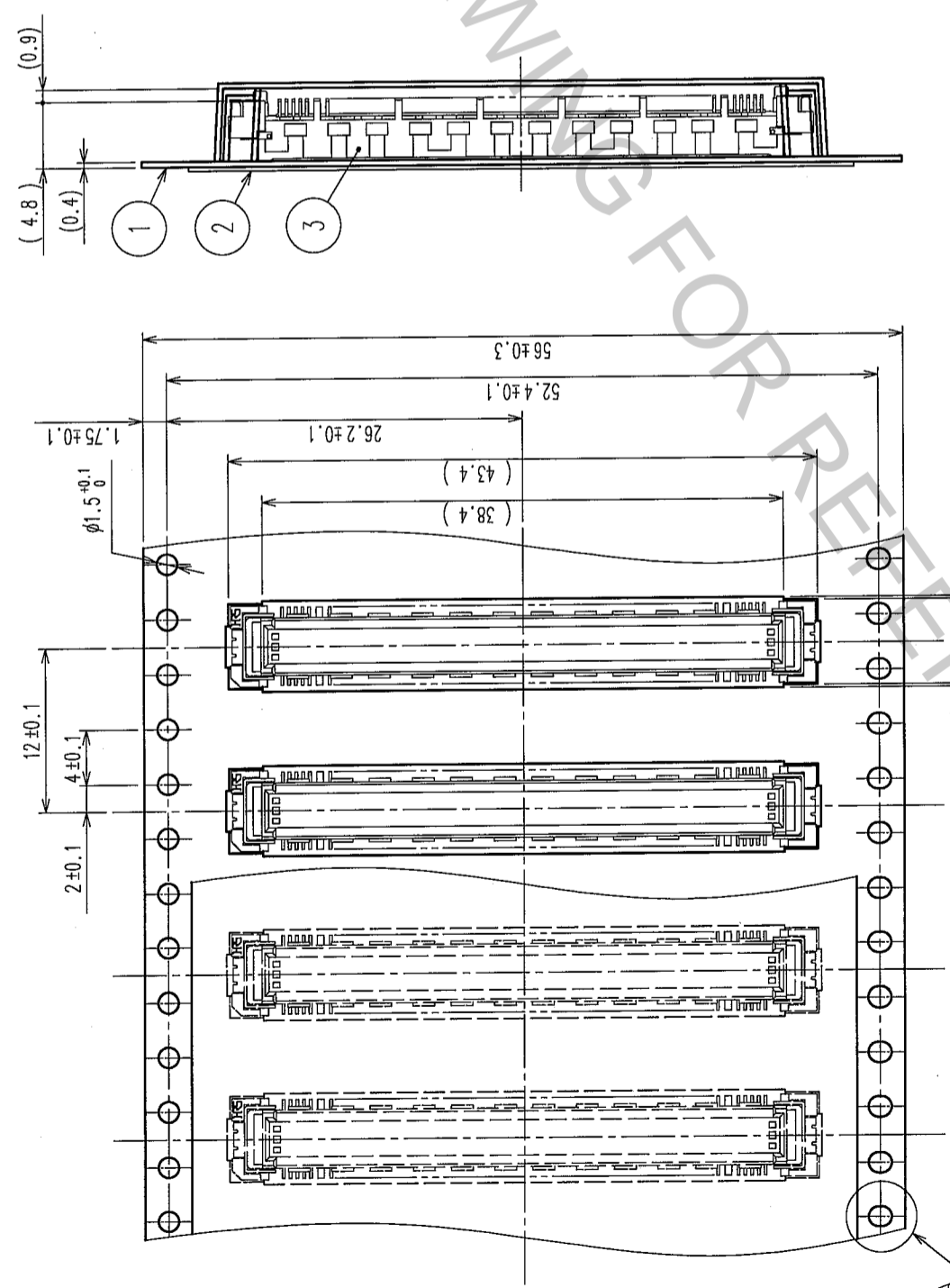


- NOTES
- 12 HATCHED [diagonal lines] PARTS: GROUND CIRCUIT.
 - 2 HATCHED [cross-hatch] PARTS: GROUND CIRCUIT.
 - SMT LEAD-COPLANARITY: 0.1 MAX.
 - THIS PRODUCT HAS NO POLARITY TO PATTERN FOR MOUNTING.
 - MAKE SURE WIDTH OF PATTERN IS WITHIN THAT OF LAND, OR LEAD MAY TOUCH PATTERN. (THIS APPLIES TO HATCHED [cross-hatch] AREA.)
 - EMBOSS CARRIER TAPE PACKAGE IS APPLIED ON THIS PRODUCT. PLEASE REFER TO THE SHEET 2/2 FOR THE DETAILS.
 - THE DIMENSIONS IN PARENTHESES ARE FOR REFERENCE.

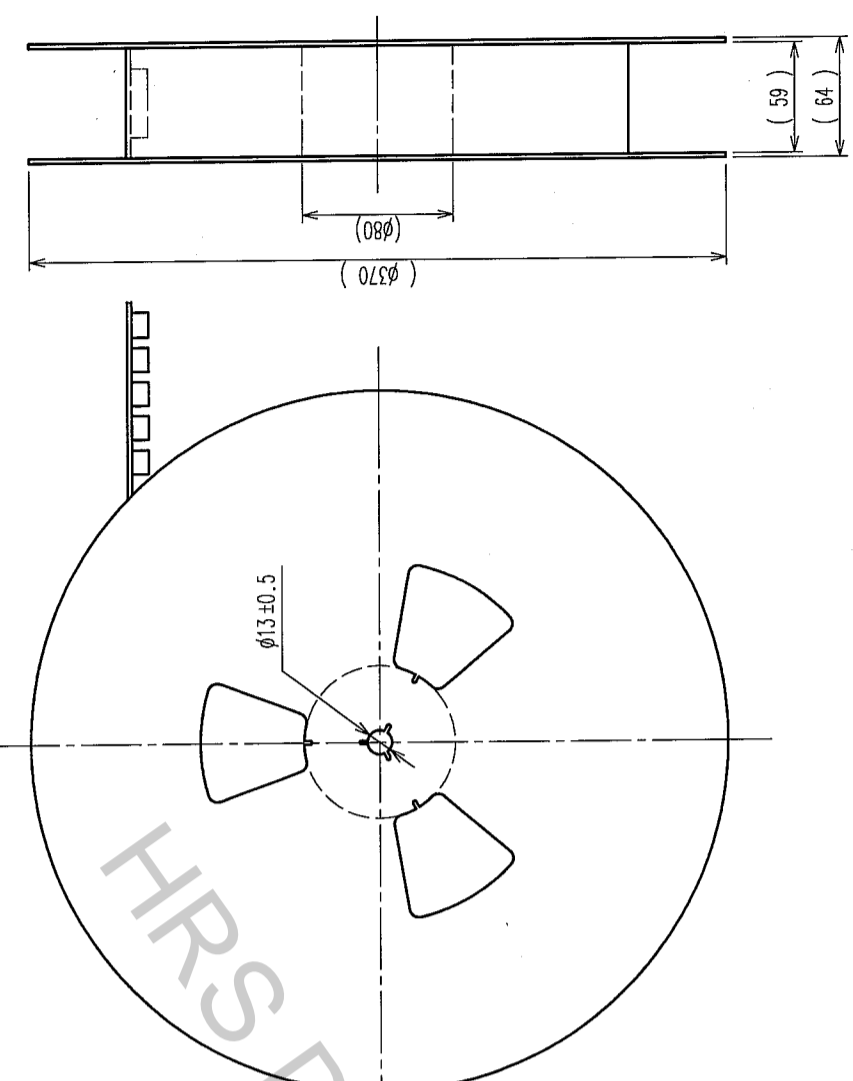
NO.	MATERIAL	FINISH, REMARKS	NO.	MATERIAL	FINISH, REMARKS
2	PHOSPHOR BRONZE	TIN-PLATING	4	PHOSPHOR BRONZE	TIN-PLATING
1	LCP	BEIGE UL94V-0	3	PHOSPHOR BRONZE	CONTACT AREA: GOLD 0.1μm min. LEAD AREA: TIN-PLATING 1μm min. UNDER PLATING: NICKEL 1μm min.
CODE NO. (OLD) CL		DRAWN T. YANAGISAWA	DESIGNED H. Nakamura		CHECKED K. Ogawa
SCALE 4 : 1		DATE '05.12.14	DATE '05.12.14		DATE '05.12.16
UNITS mm		DRAWING NO. EDC3-151962-21		PART NO. FX10A-120P/12-SV1(91)	
		HRS		HIROSE ELECTRIC CO., LTD	
		CODE NO. CL570-0103-5-91		APPROVED H. Okawa	
				RELEASED	

TO

COUNT	DESCRIPTION OF REVISIONS	BY	CHKD	DATE	COUNT	DESCRIPTION OF REVISIONS	BY	CHKD	DATE
△					△				
△					△				
△					△				

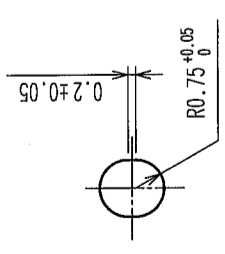


REELED DIMENSION(Free)



THE DIRECTION OF PULLING OUT

A (5:1)



- NOTES
- 1 REEL: 1000 CONNECTORS.
 - 2 MINIMUM 10 COMPARTMENTS FROM BOTH REEL ENDS REMAIN EMPTY.
 - 3 THIS PRODUCT HAS NO POLARITY TO TAPE AND REEL PACKAGING.
 - 4 THE DIMENSIONS IN PARENTHESES ARE FOR REFERENCE.

2	PET	TOP COVER TAPE							
1	PS	EMBOSSED CARRIER TAPE	3						(CONNECTOR)
NO.	MATERIAL	FINISH, REMARKS	NO.	MATERIAL	DESIGNED	CHECKED	APPROVED	RELEASED	
DRAWING FOR PACKING			DRAWN			T. YANAGISAWA			
CL			'05.12.14			K. Yamamura			
DRAWING NO. EDC3-151962-21			PART NO. FX10A-120P/12-SV1(91)			'05-12-14			
SCALE 2:1			UNITS (mm)			HIROSE ELECTRIC CO., LTD			
HRS			CODE NO. CL570-0103-5-91						2

TO	