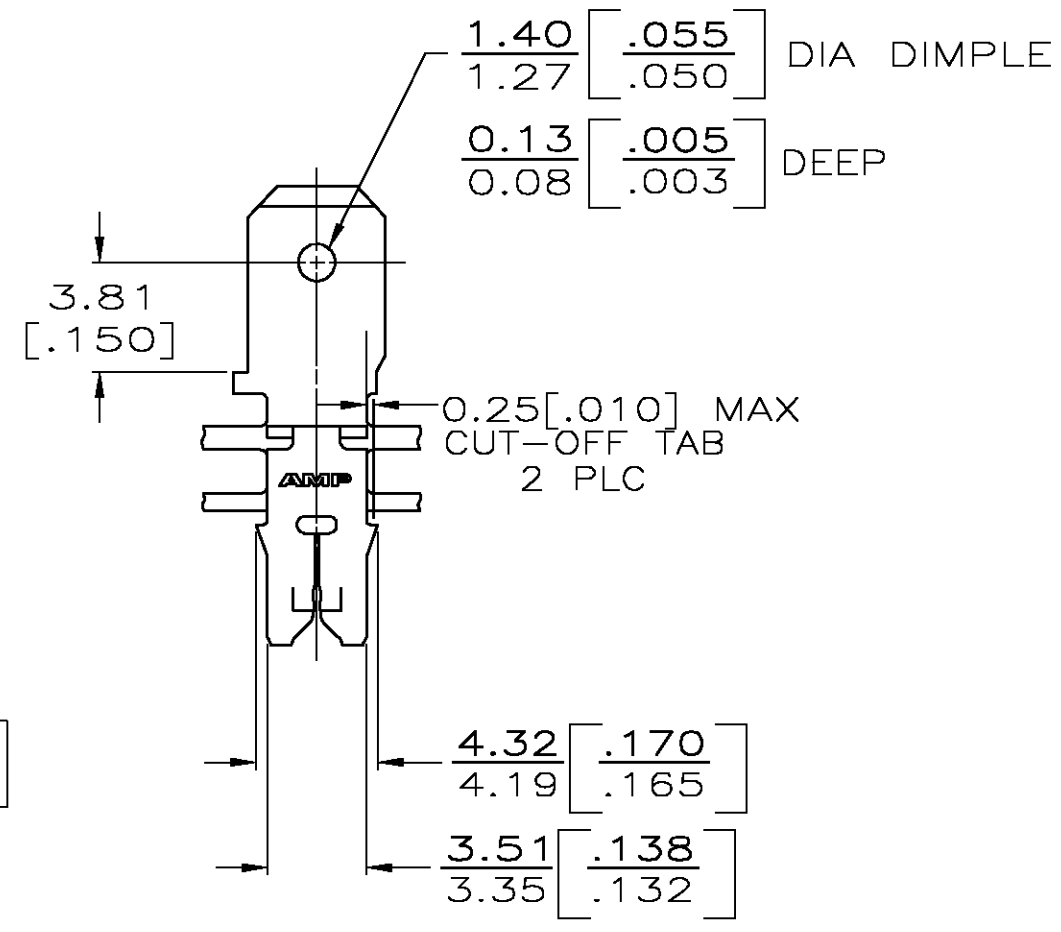
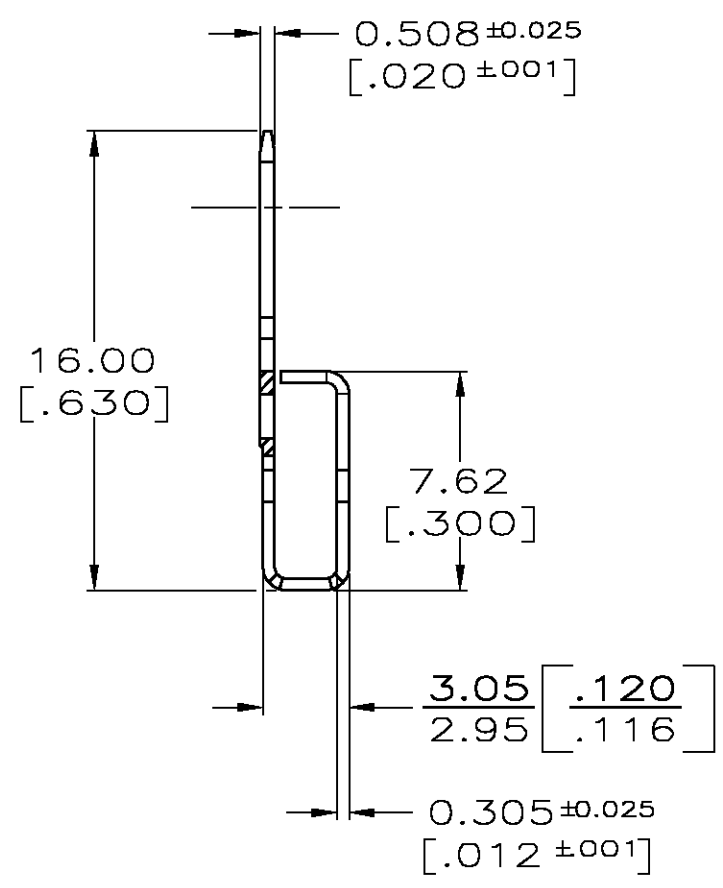
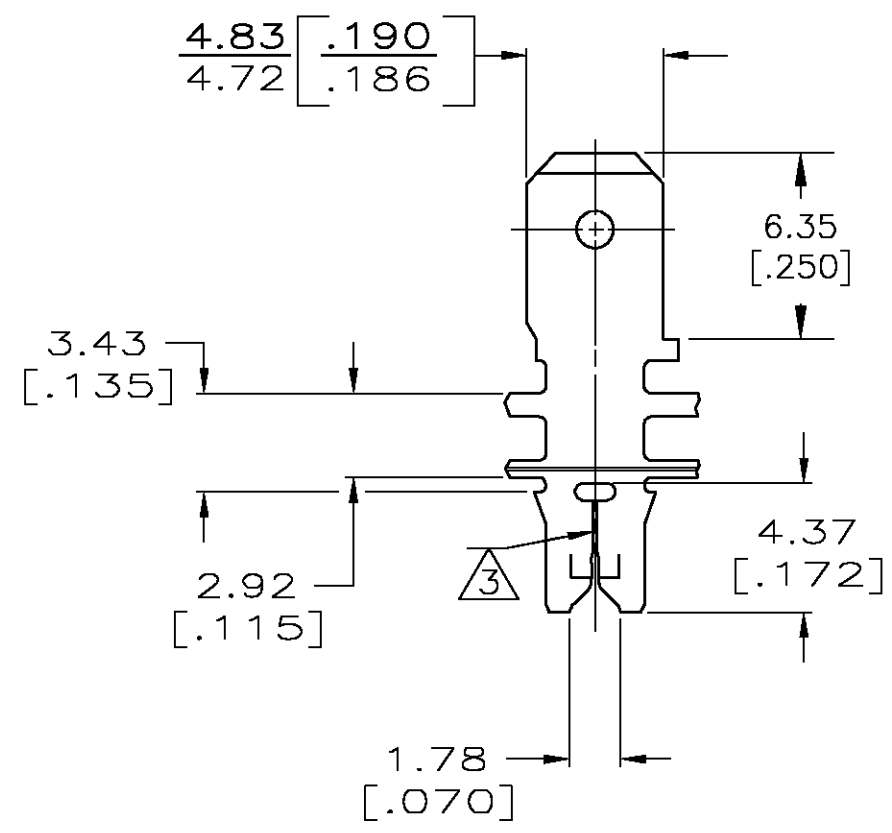


THIS DRAWING IS UNPUBLISHED. RELEASED FOR PUBLICATION
 © COPYRIGHT BY TYCO ELECTRONICS CORPORATION. ALL RIGHTS RESERVED.

LOC	DIST	REVISIONS			
P	LTR	DESCRIPTION	DATE	DWN	APVD
AF	50	P	REV PER 0G3A-0237-03	24APR03	JR KR

IDENTIFICATION NUMBER FOR 6 MAGNET WIRE

1 CONTINUOUS STRIP ON REELS WITH TERMINALS LOCATED ON 5.59 [.220] CENTERS

3 SLOT TERMINATES EITHER SINGLE OR DOUBLE MAGNET WIRE OF THE SAME SIZE, COPPER 0.25-0.36mm [#30-#27 AWG]

2 AFTER INSERTION INTO PLASTIC HOLDER TAB PORTION MUST BE BENT OVER 45° TO 90° OR POTTED-IN TO PREVENT PULL-OUT WHEN MATING RECEPTACLE IS DISCONNECTED

62512-1
PART NO

THIS DRAWING IS A CONTROLLED DOCUMENT.		DWN 12/4/89 D.K. SCHRUM	Tyco Electronics Corporation Harrisburg, PA 17105	
DIMENSIONS: MM [INCHES]		CHK 12/19/89 M.S. FEHER	NAME TAB, .187 FASTON, MAG-MATE	
TOLERANCES UNLESS OTHERWISE SPECIFIED: 0 PLC ± - 1 PLC ± - 2 PLC ± - 3 PLC ± 0.38 [.015] 4 PLC ± - ANGLES ± -		APVD 12/19/89 N. NEFF	PRODUCT SPEC 108-2012	
MATERIAL #4 HARD PREMILLED BRASS		FINISH 0.002032 [.000080] MIN TIN	APPLICATION SPEC 114-2046	RESTRICTED TO -
		WEIGHT -	SIZE A3	CAGE CODE 00779
		CUSTOMER DRAWING	DRAWING NO 62512	REV P
		SCALE 4:1	SHEET 1 OF 1	