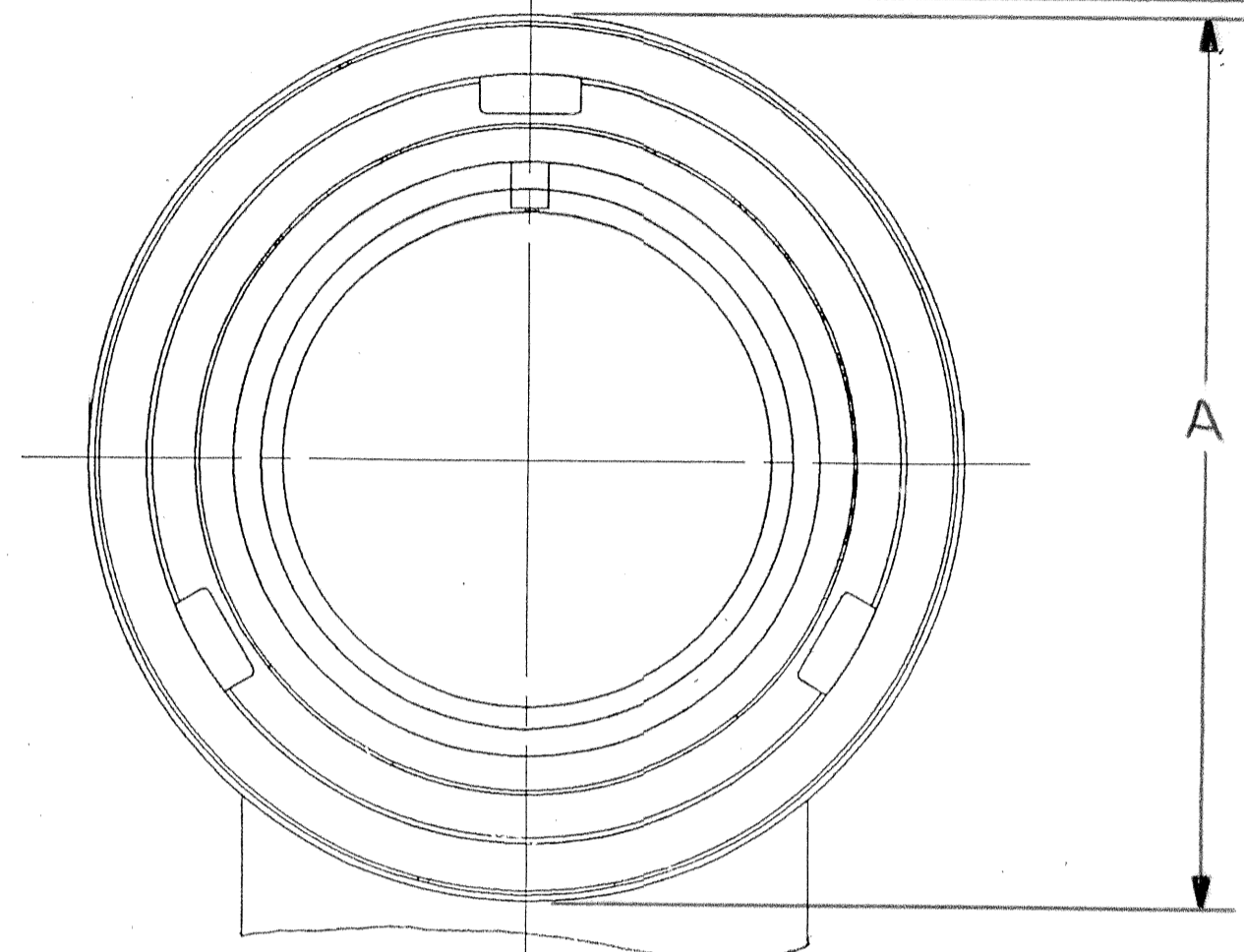
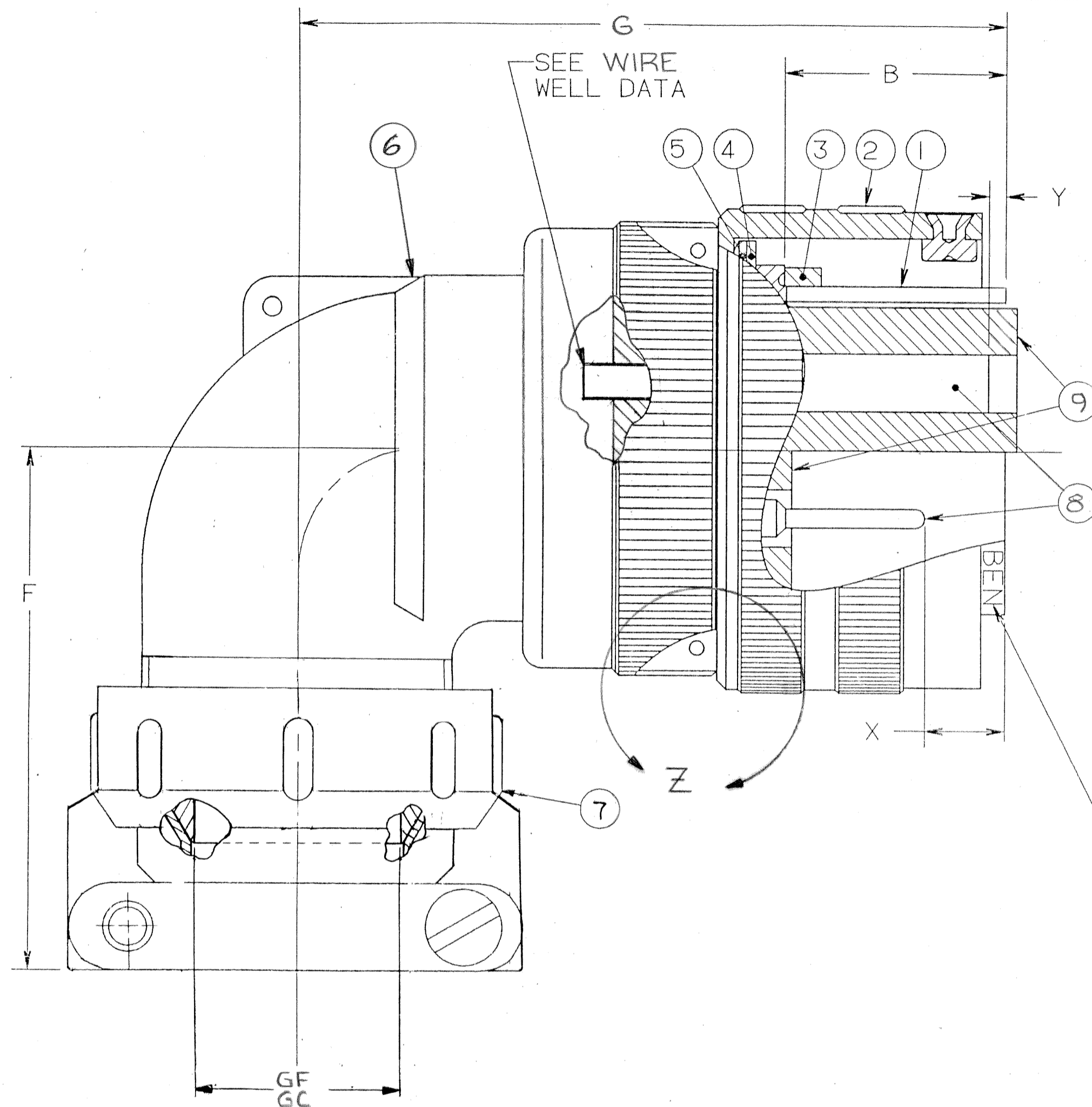


REVISIONS				
ZONE	LTR	DESCRIPTION	DATE	APPROVED
	A	INITIAL RELEASE NUM: 70092-372		
	B	(CL II) WAS 'A + B' NOTE 10, 11 + VIEW Z ECN: 27277	12-2-02 SNYDER	gcb
	C	(CL II) SEE ECN 27594	10-2-93 S. P. H. / K	gcb
	D	(CL I) SEE CHG NOTICE, ECN: 28101	4/21/94 Prescott	p gcb



VIEW LESS CABLE CLAMP AND SLEEVE

BLACK INK STAMP PER 9-3856-5 "BENDIX",
GTCNUMBER, (SEE COLUMN), AND DATE CODE,
(9-3895), .062-.094 HIGH.

EXAMPLE:
BENDIX GTC08CF24-2P 9252

FIND NO.	QTY RECD.	FSCM NO.	PART NUMBER	DESCRIPTION	NOTE REF.
9	1		10-748XX-()S	INSERT, SOCKET	4
9	1		10-748XX-()P	INSERT, PIN	4
8			SEE NOTE 8	CONTACT	2,3
7	1		SEE COLUMN	CABLE CLAMP	
6	1		SEE COLUMN	ELBOW ASSEMBLY	3
5	1		10-564859-XX	WASHER, WAVED	
4	1		10-564860-XX	WASHER, SKID	
3	1		10-564843-XX1	GASKET	
2	1		10-564856-XX3	NUT, COUPLING	
1	1		SEE COLUMN	SHELL	

UNLESS OTHERWISE SPECIFIED
LINEAR DIMENSIONS ARE IN
INCHES.
TOLERANCES: .XXX±.010,
.XX ±.03, .X ±.1,
ANGLES ±2°.
OTHER STANDARDS PER 9-3800
AND DOD-D-1000.
NOTE REF. = **XX**

SPECIFICATIONS		SIGNATURES		DATES		PARTS LIST	
MATERIAL SPEC.	N/A	PREPARED	<i>R. B. BOGHIANK</i>	10/28/92	AMPHENOL CORPORATION BENDIX CONNECTOR OPERATIONS SIDNEY, N.Y.		
PROCESS SPEC.	SEE NOTE 5	CHECKED	<i>[Signature]</i>	11-9-92	CONNECTOR, ELECTRICAL PLUG, REVERSE BAYONET COUPLING, TYPE GTC08CF(-)(-),		
		APPROVED	<i>[Signature]</i>	11-9-92	SIZE	FSCM NO.	71-586840/859
		APPROVED	<i>[Signature]</i>	11/9/92	SCALE	WT.	REF: 71-580430/449

SEE SHEET 2.
NOTES:

THE USE OF THIS DOCUMENT IS UNLIMITED.
HOWEVER, DOCUMENTS REFERENCED HEREON
MAY CONTAIN LIMITED RIGHTS DATA.

N/A
N/A
NEXT ASSEMBLY

71-586840/859

ASSEMBLY NUMBER	SHELL SIZE	GT NUMBER	SHELL	ELBOW ASSEMBLY	CABLE CLAMP	A		B		F MAX	G MAX	GC CLOSED DIA	GF FREE DIA
						DIA MAX	±.005	F	G				
71-586840-()	8S		NOT AVAILABLE										
- 841-()	10S		NOT AVAILABLE										
- 842-()	10SL		GTC08CF10SL-()	10-580915-113	10-350349-123	.897	.531			2.402	1.772	.094	.312
- 843-()	12S		NOT AVAILABLE										
- 844-()	12		NOT AVAILABLE										
- 845-()	14S		GTC08CF14S-()	10-37266-14	10-350349-143	1.150	.531			2.402	1.850	.230	.438
- 846-()	14		NOT AVAILABLE										
- 847-()	16S		GTC08CF16S-()	10-37266-16	10-350349-163	1.299	.531			2.402	1.890	.316	.531
- 848-()	16		GTC08CF16-()	10-37266-17	10-350349-163	1.299	.719			2.744	2.244	.316	.531
- 849-()	18		GTC08CF18-()	10-37266-18	10-350349-183	1.437	.719			2.677	2.283	.378	.625
- 850-()	20		GTC08CF20-()	10-37266-20	10-350349-203	1.571				2.677	2.402	.445	.750
- 851-()	22		GTC08CF22-()	10-37266-22	10-350349-203	1.697				2.677	2.402	.445	.750
- 852-()	24		GTC08CF24-()	10-37266-24	10-350349-243	1.835				2.992	2.598	.611	.938
- 853-()	28		GTC08CF28-()	10-37266-28	10-350349-243	2.102				2.992	2.598	.611	.938
- 854-()	32		GTC08CF32-()	10-37266-32	10-350349-323	2.366				3.425	2.835	.922	1.250
- 855-()	36		GTC08CF36-()	10-37266-36	10-350349-363	2.610				3.858	2.953	.922	1.375
71-586856-()	40		GTC08CF40-()	10-37266-40	10-350349-403	2.850				4.055	2.969	1.180	1.625
71-586857-859-()			NOT AVAILABLE										

TO COMPLETE, ADD APPLICABLE INSERT ARRANGEMENT SUFFIX PER 9-2437.

9. PACKAGE PER PRODUCTION PROCESS SHEET.
8. SEE SEPARATE PARTS LIST FOR COMPONENT PART NUMBERS AND QUANTITIES.
7. FOR MATING CONNECTOR ASSEMBLIES, SEE 71-580960/979 AND OTHERS.
6. SEE WORK ORDER FOR PERMISSIBLE ADDITIONAL OR ALTERNATE STAMPING.
5. PROCESS SPEC:
 ASSY 9-9238
 TEST 9-3106-18
 9-3856-5, 9-3895, 9-2437
4. INSERTS ARE NOT REMOVABLE
3. DRAWING ILLUSTRATES FINAL ASSEMBLY. FOR STORAGE AND SHIPPING ELBOW ASSEMBLY AND CLAMP ASSEMBLY MUST BE LOOSELY COUPLED.
2. FOR CONTACT SIZE, SPACING AND SERVICE RATING, SEE MIL-STD-1651 OR L-11908-() THRU L-11948-().
1. UNIT MEETS THE APPLICABLE REQUIREMENTS OF MIL-C-5015.

CONTACT SIZE	SHELL SIZE	X	Y ±.040
16 SHORT	10SL, 14S, 16S	.087±.039	.079
16 LONG	16 THRU 40	.260 ^{+.052} _{-.041}	.102
12	16 THRU 40	.118 ^{+.039} _{-.056}	.102
4,8,0	16 THRU 40	.091±.039	.102

WIRE WELL DATA					
CONTACT SIZE	0	4	8	12	16
WELL DIA	.453±.005	.281 ^{+.005} _{-.004}	.179 ^{+.004} _{-.002}	.098 ^{+.004} _{-.001}	.063 ^{+.004} _{-.001}
WELL DEPTH	^{+.031} _{-.000}	.750	.500	.500	.250

71-586840/859