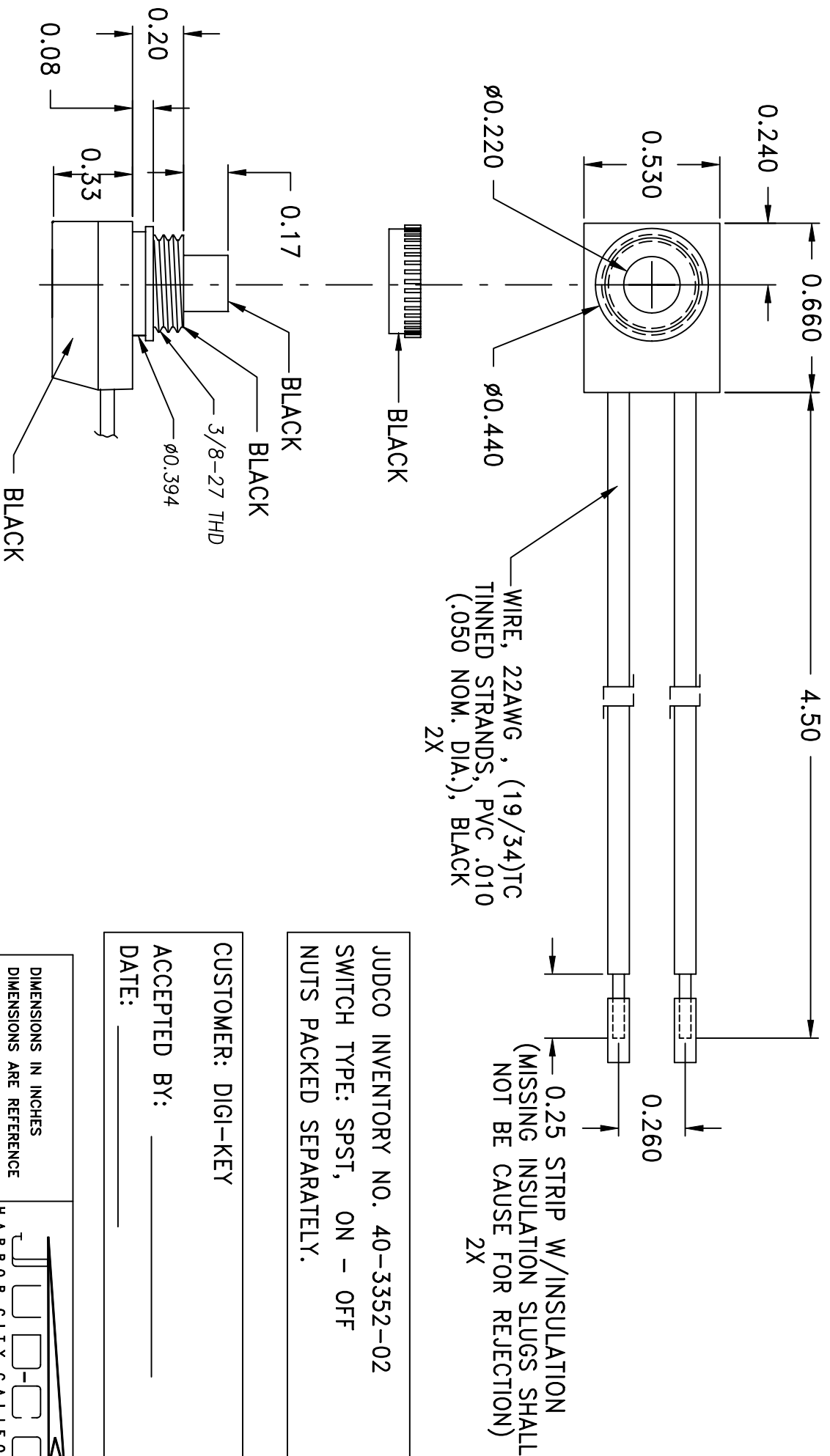



LTR	EN	DESCRIPTION	APPR	BY	DATE
A	-	INITIAL RELEASE	RB	NH	11-10-03



JUDCO INVENTORY NO. 40-3352-02  
 SWITCH TYPE: SPST, ON - OFF  
 NUTS PACKED SEPARATELY.

CUSTOMER: DIGI-KEY  
 ACCEPTED BY: \_\_\_\_\_  
 DATE: \_\_\_\_\_

DIMENSIONS IN INCHES DIMENSIONS ARE REFERENCE		 HARBOR CITY CALIFORNIA	
DRAWN: NH	11-10-03	TITLE	OUTLINE
APPR: KJ	11-10-03	DWG. NO.	J-188B-1
1415U495A.DWG		SHEET	1 OF 1

This document embodies a product, component, and/or design proprietary to JUDCO MANUFACTURING INC., and which is protected either as a trade secret, by U.S. Patent, or by copyright. It may not be used in any way without written express consent of JUDCO MANUFACTURING INC.