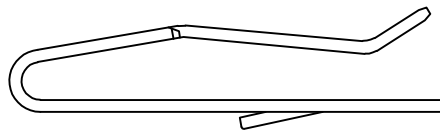
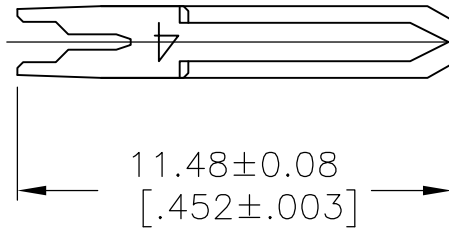
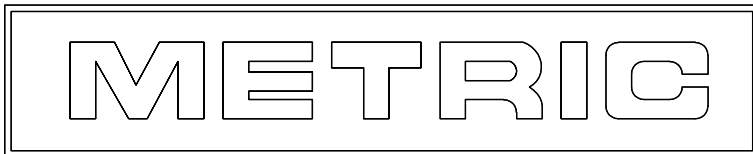


LOC	DIST	REVISIONS					
CM	00	P	LTR	DESCRIPTION	DATE	DWN	APVD
			L	REVISED PER ECO-07-00260	09APR07	KW	DB
			L1	REVISED PER ECO-09-023313	12OCT09	KK	AEG

DIMENSION IN BRACKET ARE IN INCHES.



△ 1 OBSOLETE PARTS: OBSOLETE CIS STREAMLINING PER D.RENAUD/D.SINISI



TIN	640637-3
TIN-LEAD	△ 1 -640637-1
FINISH	PART NO

RELEASED FOR PUBLICATION

ALL RIGHTS RESERVED.

BY TYCO ELECTRONICS CORPORATION.

© COPYRIGHT

THIS DRAWING IS UNPUBLISHED.

DIMENSIONS: mm [INCHES]	DWN	BSV	25OCT2005	MATERIAL	0.30[.012] THK COPPER ALLOY	FINISH	MATTE TIN OR BRIGHT TIN LEAD 0.00203[.000080] MIN THK				
	CHK	D. BOSSI	25OCT2005	Tyco Electronics Corporation Harrisburg, PA 17105-3608							
TOLERANCES UNLESS OTHERWISE SPECIFIED:	APVD	D. BOSSI	25OCT2005								
0 PLC ± -	PRODUCT SPEC			NAME							
1 PLC ± -	-			CONTACT, LOOSE PIECE,							
2 PLC ± -	APPLICATION SPEC			24 AWG WIRE, MTA-100							
3 PLC ± -	-			SIZE	CAGE CODE	DRAWING NO	RESTRICTED TO				
4 PLC ± -	-			A4	00779	C-640637	-				
ANGLES ± -	WEIGHT			-							
				CUSTOMER DRAWING		SCALE	5:1	SHEET	1 OF 1	REV	L1