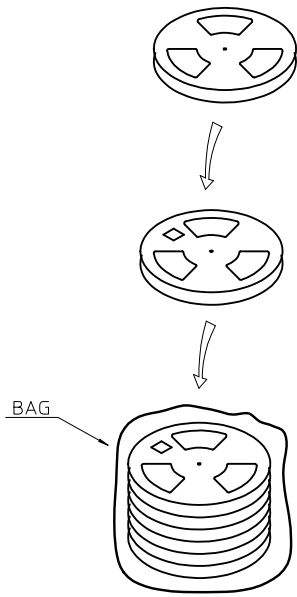


NOTE:

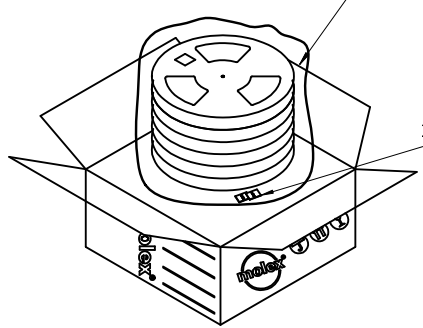
1. TAPE SIZE 29.5mm
2. STAPLES SHOULD ONLY BE USED TO SET UP CARTON
- ALL CARTONS CLOSURES MUST BE DONE WITH TAPE.
3. FILL PACKAGING REEL WITH THE QUANTITIES AS INDICATED IN THE CHART.

PRODUCT P/N	PARTS PER PRIMARY CARTON	PARTS PER REEL	TOTAL REELS PER PRIMARY CARTON
48168-1201 48168-1211	7000(PCS)	1400(PCS)	5
48168-3001 48168-3011	5600(PCS)	1400(PCS)	4

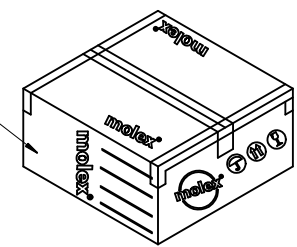


PRIMARY CARTON
096707-0007

2 DESICCATING AGENT



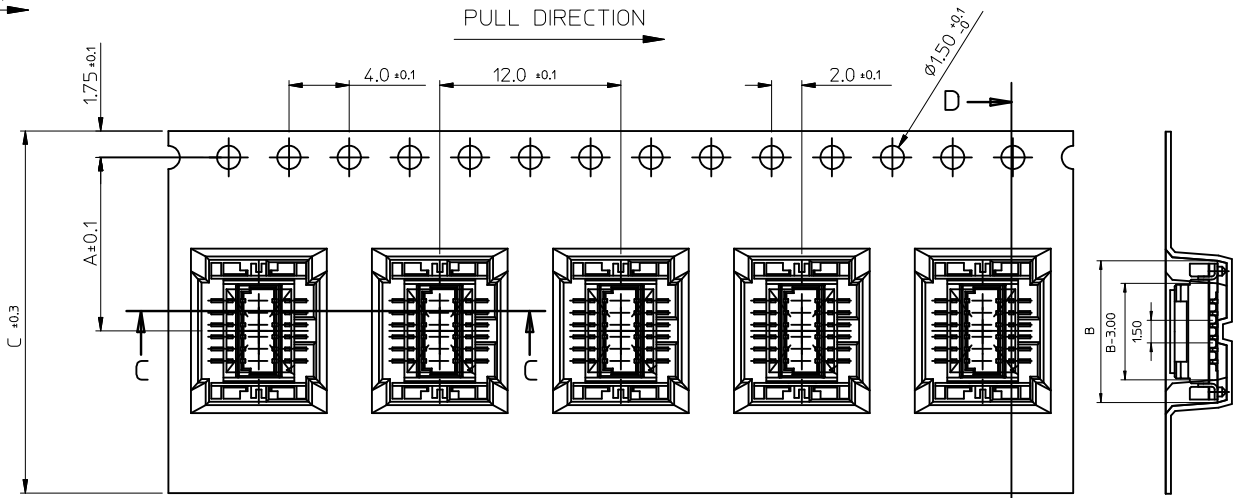
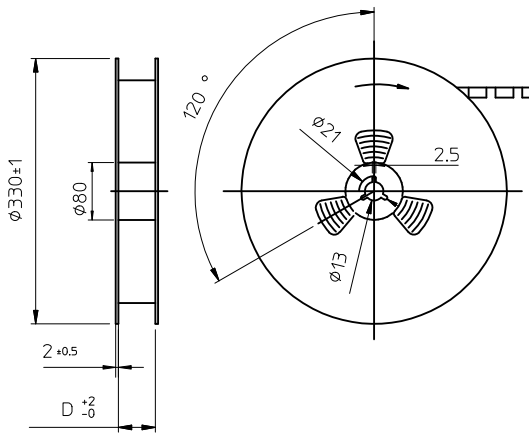
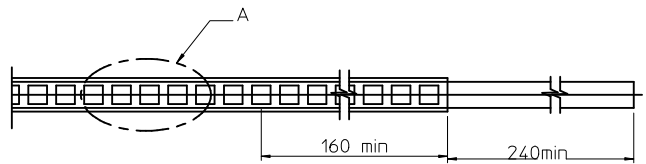
PRIMARY CARTON
096707-0007



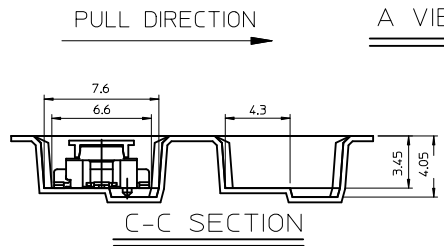
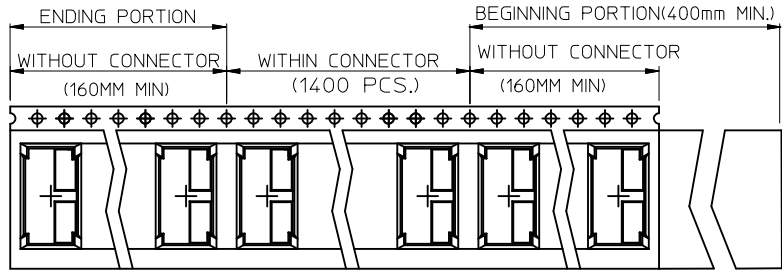
REVISE EC NO: SH2010-0365 DRWN: YANG05 2010/03/12 CHK: ERIC KAO 2005/07/05 APPR: RZHANG 2010/04/30	DESCRIPTION REV	QUALITY SYMBOLS	GENERAL TOLERANCES (UNLESS SPECIFIED)		DIMENSION STYLE MM ONLY		SCALE 6:1	DESIGN UNITS METRIC	THIRD ANGLE PROJECTION																																
		$\nabla_F = 0$ $\nabla_{F'} = 0$ $\nabla_{F''} = 0$	<table border="1"> <tr> <th></th> <th>mm</th> <th>INCH</th> </tr> <tr> <td>4 PLACES</td> <td>± ---</td> <td>± ---</td> </tr> <tr> <td>3 PLACES</td> <td>± ---</td> <td>± ---</td> </tr> <tr> <td>2 PLACES</td> <td>± 0.25</td> <td>± ---</td> </tr> <tr> <td>1 PLACE</td> <td>± 0.25</td> <td>± ---</td> </tr> </table>		mm	INCH	4 PLACES	± ---	± ---	3 PLACES	± ---	± ---	2 PLACES	± 0.25	± ---	1 PLACE	± 0.25	± ---	<table border="1"> <tr> <th colspan="2">DRAWN BY</th> <th>DATE</th> </tr> <tr> <td colspan="2">BERNIE</td> <td>2005/07/05</td> </tr> <tr> <th colspan="2">CHECKED BY</th> <th>DATE</th> </tr> <tr> <td colspan="2">ERIC KAO</td> <td>2005/07/05</td> </tr> <tr> <th colspan="2">APPROVED BY</th> <th>DATE</th> </tr> <tr> <td colspan="2">RZHANG</td> <td>2010/04/14</td> </tr> </table>	DRAWN BY		DATE	BERNIE		2005/07/05	CHECKED BY		DATE	ERIC KAO		2005/07/05	APPROVED BY		DATE	RZHANG		2010/04/14	TITLE		MDC 0.8 MM BTB RECEPTACLE CONNECTOR PACKAGING	
			mm	INCH																																					
		4 PLACES	± ---	± ---																																					
3 PLACES	± ---	± ---																																							
2 PLACES	± 0.25	± ---																																							
1 PLACE	± 0.25	± ---																																							
DRAWN BY		DATE																																							
BERNIE		2005/07/05																																							
CHECKED BY		DATE																																							
ERIC KAO		2005/07/05																																							
APPROVED BY		DATE																																							
RZHANG		2010/04/14																																							
DRAFT WHERE APPLICABLE MUST REMAIN WITHIN DIMENSIONS		SEE TABLE		MOLEX INCORPORATED		DOCUMENT NO. PK-48168-001	SHEET NO. 1 OF 3																																		
		SIZE A3		THIS DRAWING CONTAINS INFORMATION THAT IS PROPRIETARY TO MOLEX INCORPORATED AND SHOULD NOT BE USED WITHOUT WRITTEN PERMISSION																																					

10 9 8 7 6 5 4 3 2 1

CKT	DIMA	DIMB	DIMC	DIMD
10		8.50		
12		9.30		
14	11.50	10.10	24.00	24.40
16		10.90		
20		12.50		
24		14.10		



NOTE:
 1. QUANTITY 1400 PCS / REEL
 2. USER DIRECTION OF FEED



3. COVER TAPE PEELING FORCE:
 PULL OUT DIRECTION

A	165°~ 180°
F	0.1N~1.3N

4. PART DIMENSIONS MEET EIA-481-2-A REQUIREMENT
 5. THICKNESS: 0.35±0.05 MM

REVISE	EC NO:	DRW/NF/YANG05	2010/03/12	CHK/D:ERIC KAO	2005/07/05	APPR:RZHANG	2010/04/20
C							

QUALITY SYMBOLS	DESCRIPTION
$\nabla_{\text{A}}=0$	
$\nabla_{\text{E}}=0$	
$\nabla_{\text{F}}=0$	

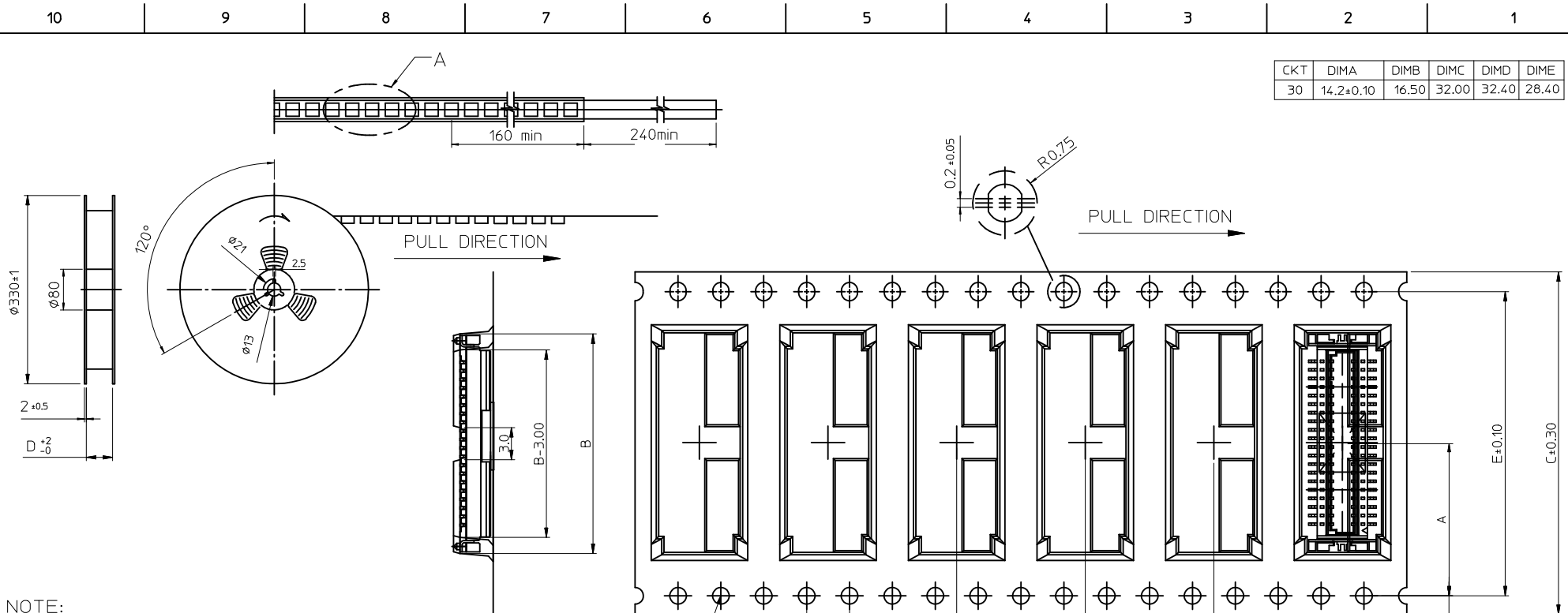
GENERAL TOLERANCES (UNLESS SPECIFIED)	mm	INCH
4 PLACES	± ---	± ---
3 PLACES	± ---	± ---
2 PLACES	± 0.25	± ---
1 PLACE	± 0.25	± ---
ANGULAR ± 3 °		

DRAFT WHERE APPLICABLE MUST REMAIN WITHIN DIMENSIONS

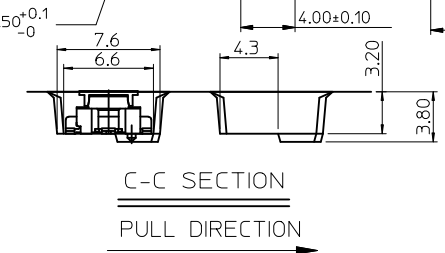
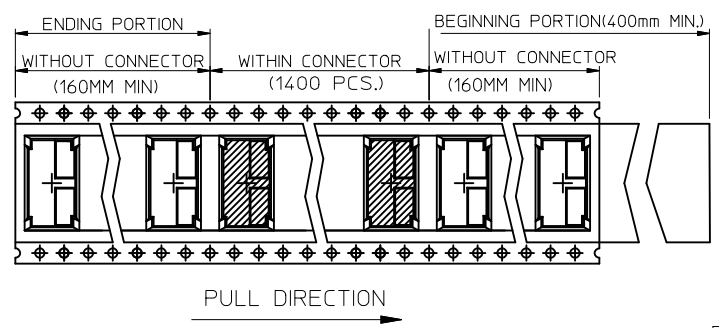
DIMENSION STYLE		SCALE	DESIGN UNITS	THIRD ANGLE PROJECTION
MM ONLY		1:1	METRIC	
DRAWN BY	DATE	TITLE		
BERNIE	2005/07/05	MDC 0.8 MM BTB RECEPTACLE CONNECTOR PACKAGING		
CHECKED BY	DATE	MOLEX INCORPORATED		
ERIC KAO	2005/07/05	DOCUMENT NO. PK-48168-001		
APPROVED BY	DATE	SHEET NO. 2 OF 3		
RZHANG	2010/04/14	SEE SHEET 1		
MATERIAL NO.		THIS DRAWING CONTAINS INFORMATION THAT IS PROPRIETARY TO MOLEX INCORPORATED AND SHOULD NOT BE USED WITHOUT WRITTEN PERMISSION		

9 8 7 6 5 4 3 2 1

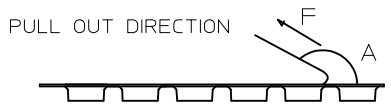
CKT	DIMA	DIMB	DIMC	DIMD	DIME
30	14.2±0.10	16.50	32.00	32.40	28.40



- NOTE:
1. QUANTITY 1400 PCS / REEL
 2. USER DIRECTION OF FEED



3. COVER TAPE PEELING FORCE: 0.12 kgf.



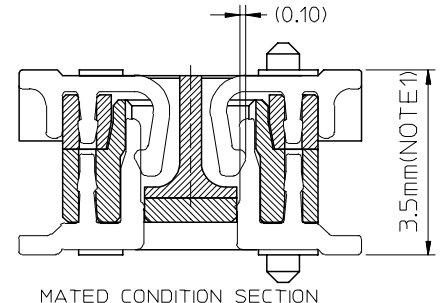
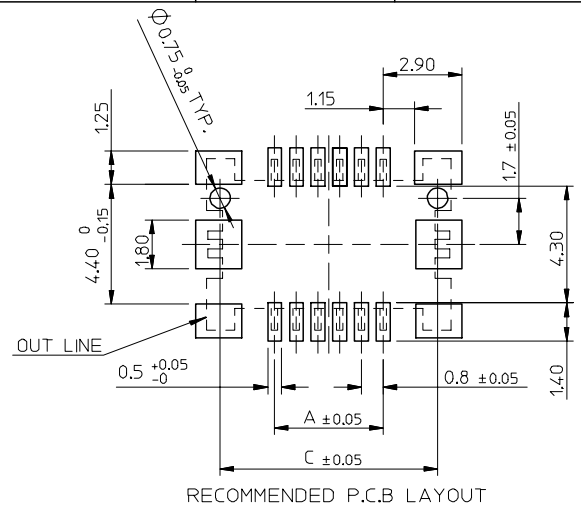
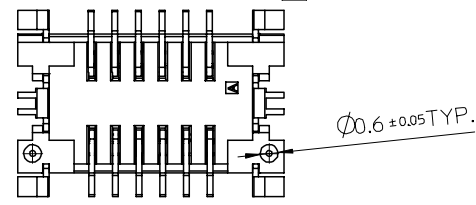
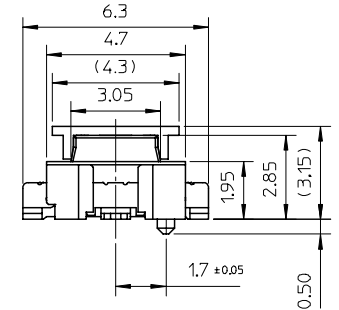
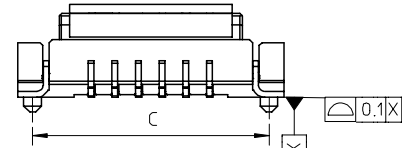
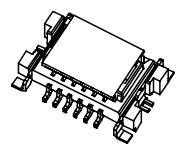
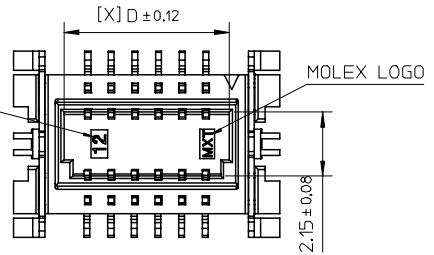
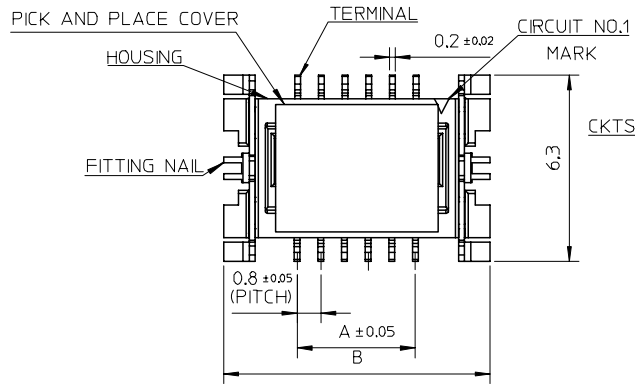
A	165° ~ 180°
F	0.1N ~ 1.3N

4. PART DIMENSIONS MEET EIA-481-2-A REQUIREMENT
5. THICKNESS: 0.35±0.05 MM

PEELING SPEED 300MM/MIN

REVISE	REV	DESCRIPTION	QUALITY SYMBOLS	GENERAL TOLERANCES (UNLESS SPECIFIED)		DIMENSION STYLE		SCALE	DESIGN UNITS	THIRD ANGLE PROJECTION
				mm	INCH	MM ONLY	1:1	METRIC		
EC NO: SH2010-0365	2010/03/12	DRW:NFYANG05	▽ _A =0	4 PLACES	± ---	± ---	DRAWN BY	DATE	TITLE	MDC 0.8 MM BTB RECEPTACLE CONNECTOR PACKAGING
CH'KD:ERIC KAO	2005/07/05	APPR:RZHANG	▽ _F =0	3 PLACES	± ---	± ---	CHECKED BY	DATE		
			▽ _B =0	2 PLACES	± 0.25	± ---	ERIC KAO	2005/07/05		
			▽ _E =0	1 PLACE	± 0.25	± ---	APPROVED BY	DATE		
				ANGULAR ± 3 °			RZHANG	2010/04/14		
				DRAFT WHERE APPLICABLE MUST REMAIN WITHIN DIMENSIONS		MATERIAL NO.		DOCUMENT NO.		SHEET NO.
						SEE SHEET 1		MOLEX INCORPORATED		3 OF 3
						SIZE A3		THIS DRAWING CONTAINS INFORMATION THAT IS PROPRIETARY TO MOLEX INCORPORATED AND SHOULD NOT BE USED WITHOUT WRITTEN PERMISSION		PK-48168-001

10 9 8 7 6 5 4 3 2 1



MATED CONDITION SECTION

NOTES
1.COPLANARITY IS 0.1mm MAX.
2.MATERIAL : HOUSING-HIGH TEMPERATURE THERMOPLASTIC, GLASS FILLED, UL 94V-0, COLOR: NATURE(WHITE)
TERMINAL- COPPER ALLOY.
FITTING NAIL- COPPER ALLOY
PICK AND PLACE COVER-HIGH TEMPERATURE THERMOPLASTIC, GLASS FILLED,UL 94V-0, COLOR: NATURE(WHITE)
3.FINISHES : TERMINAL :48168-XX01:
TIN MATT PLATED OVER ALL THICKNESS :0.025 MICROMETER
NICKEL UNDERPLATED OVER ALL, THICKNESS :1.27 MICROMETER
48168-XX11:
GOLD FLASH OVER ALL THICKNESS :0.025 MICROMETER MINIMUM;
NICKEL UNDERPLATED OVER ALL, THICKNESS :1.27 MICROMETER
FITTING NAIL :48168-XX01:
TIN MATT PLATED OVER ALL THICKNESS :0.025 MICROMETER MINIMUM;
NICKEL UNDERPLATED OVER ALL, THICKNESS :1.27 MICROMETER MINIMUM;

4.PRODUCT SPECIFICATION REFER TO PS-48126-001
5.DRAWING PACKAGING REFER TO PK-48168-001
6.TEST SUMMARY REFER TO TS-48210-001
7.MATED WITH 48126-SERIES
8.P/N LEGEND 48168-XXX1
9.LEAD-FREE AND ROHS COMPLIANCE

NO OF CKTS PLATING
0:MATT TIN
1:GOLD FLASH OVER ALL

DIMA	DIMB	DIMC	DIMD	CKT	AVAILABLE
3.2	8.2	7.2	4.8	10	-
4.0	9.0	8.0	5.6	12	YES
4.8	9.8	8.8	6.4	14	-
5.6	10.6	9.6	7.2	16	-
7.2	12.2	11.2	8.8	20	-
8.8	13.8	12.8	10.4	24	-
11.2	16.2	15.2	12.8	30	YES

<p>RELEASED</p> <p>EC NO: SH2005-0240</p> <p>DR:WNEKA001 2005/11/03</p> <p>CHKD: 2005/11/03</p> <p>APPR:WMSCHANG 2005/11/04</p>	<p>DESCRIPTION</p> <p>QUALITY SYMBOLS</p> <p>▽=0</p> <p>▽=0</p>	<p>GENERAL TOLERANCES (UNLESS SPECIFIED)</p>		<p>DIMENSION STYLE</p> <p>IN/MM</p>		<p>SCALE</p> <p>6:1</p>	<p>DESIGN UNITS</p> <p>INCH</p>	<p>THIRD ANGLE PROJECTION</p>	
		<p>4 PLACES ± --- ± ---</p>	<p>3 PLACES ± --- ± ---</p>	<p>DRAWN BY</p> <p>BERNIE</p>	<p>DATE</p> <p>2005/01/25</p>	<p>TITLE</p> <p>MDC BOARD TO BOARD RECEPTACLE CONNECTOR (LEAD-FREE VERSION)</p>			
		<p>2 PLACES ± 0.25 ± ---</p>	<p>1 PLACE ± 0.25 ± ---</p>	<p>CHECKED BY</p> <p>ERIC</p>	<p>DATE</p> <p>2005/01/25</p>	<p>MOLEX MOLEX INCORPORATED</p>			
		<p>ANGULAR ± 3 °</p>		<p>APPROVED BY</p> <p>WILSON</p>	<p>DATE</p> <p>2005/01/25</p>	<p>MATERIAL NO.</p> <p>SEE NOTES</p>	<p>DOCUMENT NO.</p> <p>SD-48168-001</p>	<p>SHEET NO.</p> <p>1 OF 1</p>	

DRAFT WHERE APPLICABLE MUST REMAIN WITHIN DIMENSIONS

THIS DRAWING CONTAINS INFORMATION THAT IS PROPRIETARY TO MOLEX INCORPORATED AND SHOULD NOT BE USED WITHOUT WRITTEN PERMISSION

9 8 7 6 5 4 3 2 1