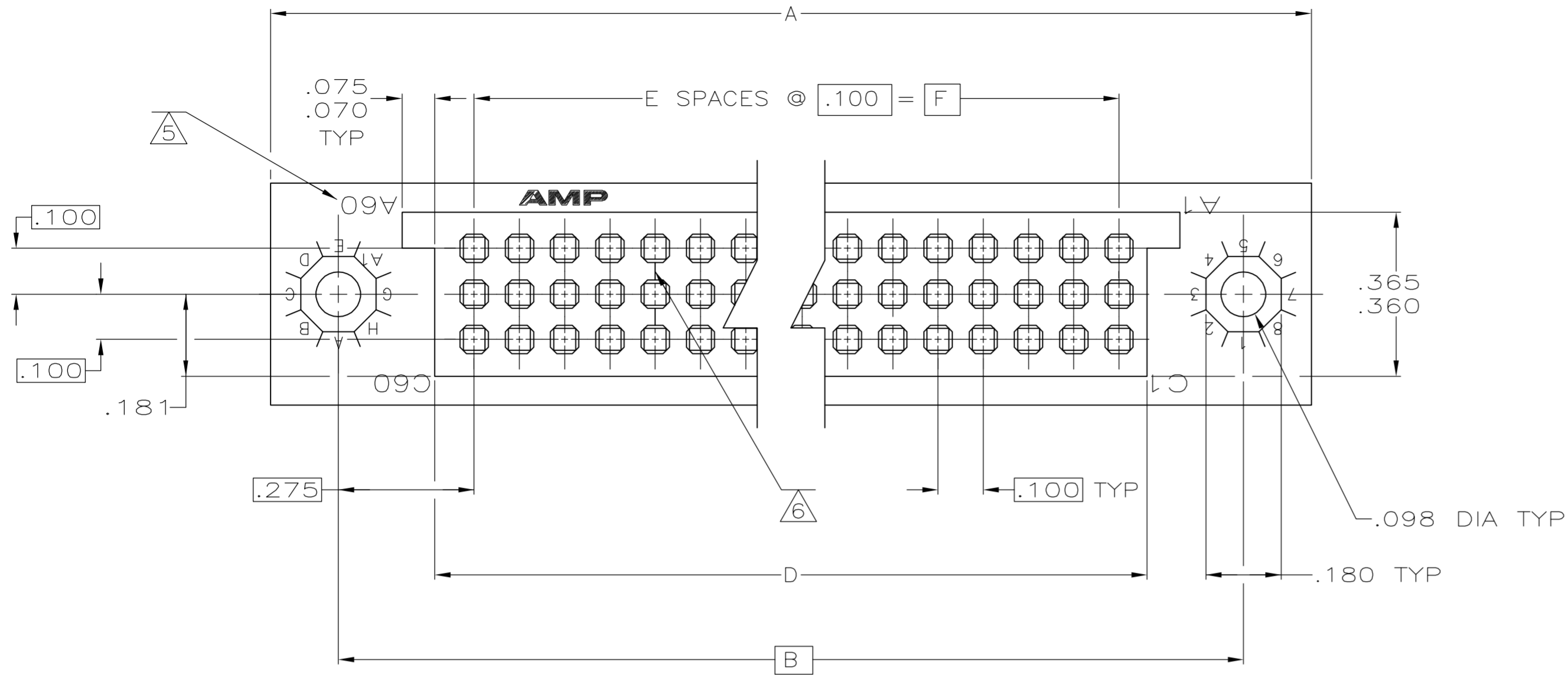
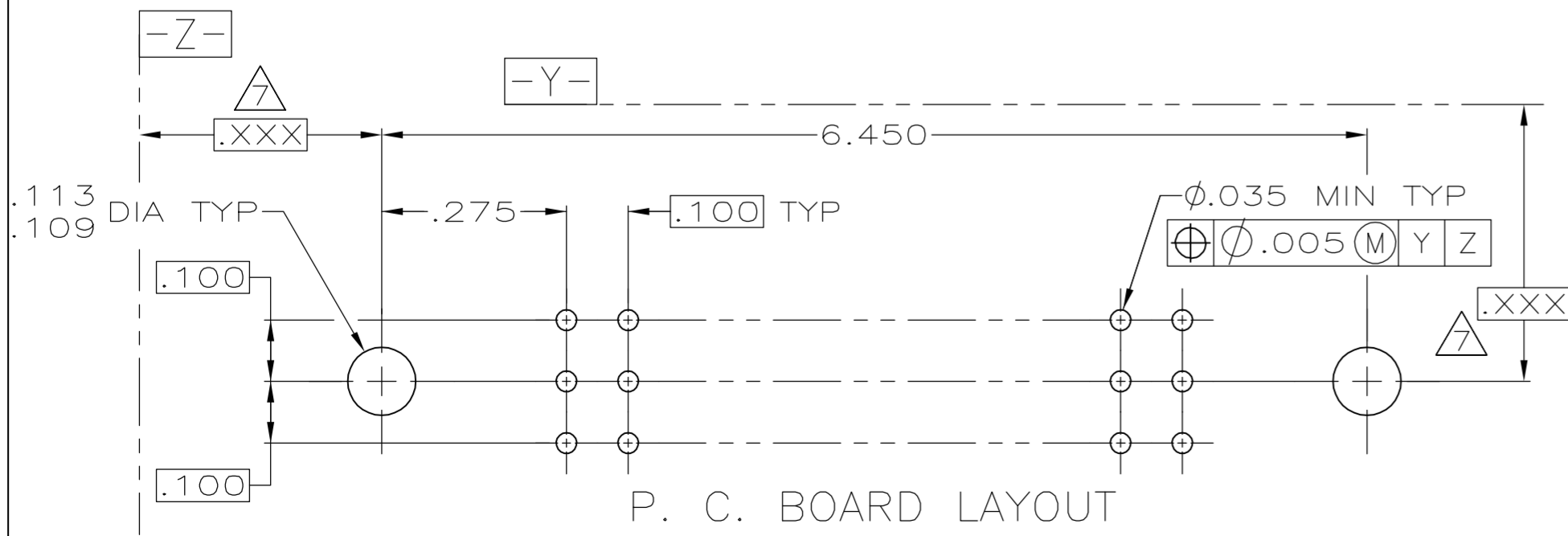
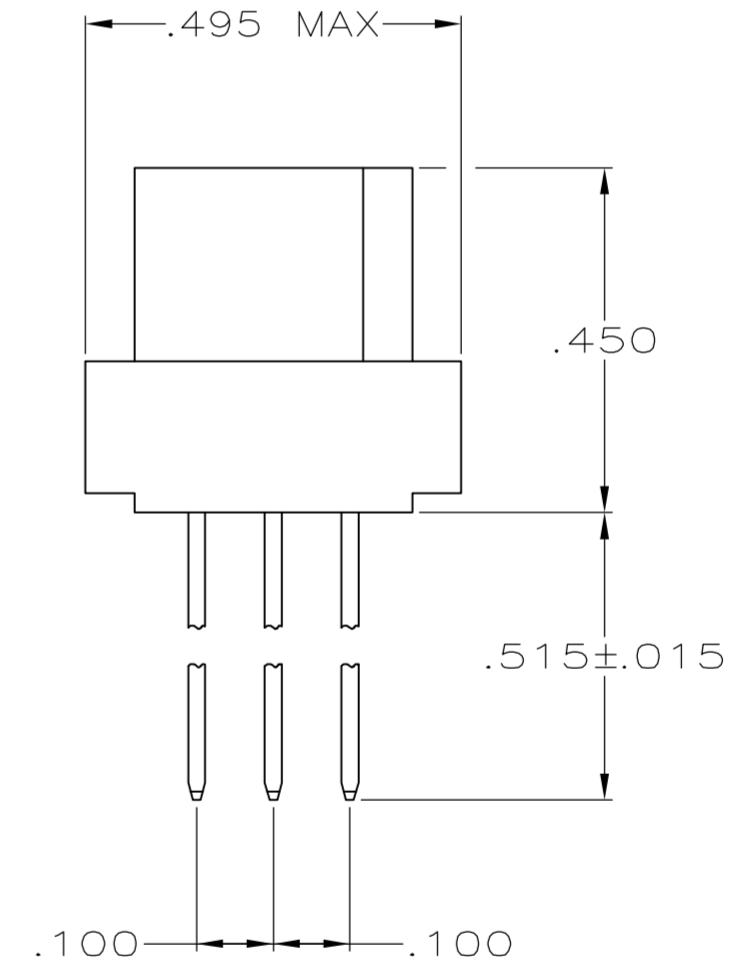
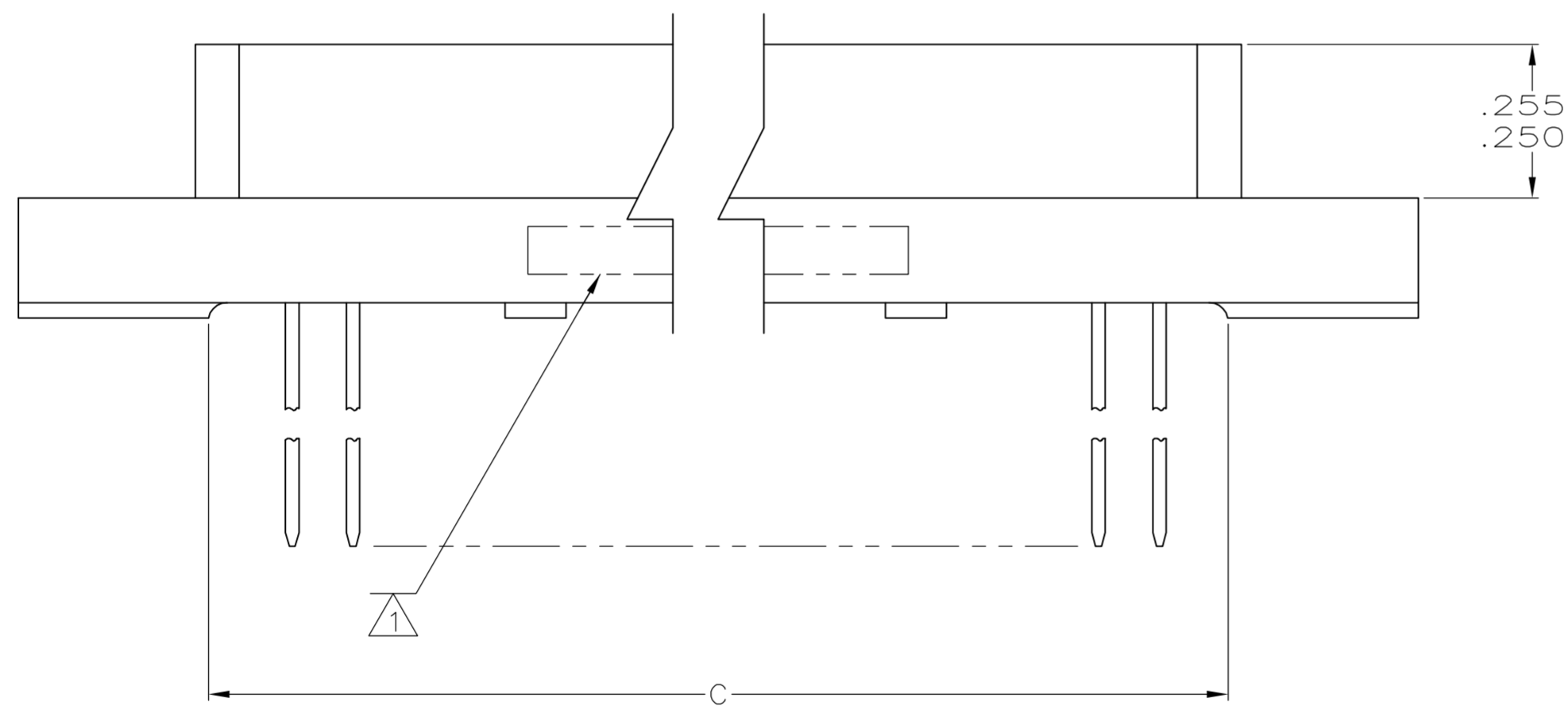


THIS DRAWING IS UNPUBLISHED. RELEASED FOR PUBLICATION  
 © COPYRIGHT BY TYCO ELECTRONICS CORPORATION. ALL RIGHTS RESERVED.

LOC		DIST		REVISIONS			
P	LTR	DESCRIPTION		DATE	DWN	APVD	
D		REV PER ECO 05-013561		06DEC05	VF	CT	



- 1 (CUSTOMER P/N), AMP, DATE CODE, AMP P/N, MARKED THIS AREA.
- 2 HOUSING MATERIAL: POLYPHENYLENE SULFIDE, GST-40F  
COLOR: BROWN
- 3 CONTACT MATERIAL: BERYLLIUM COPPER (BeCu) OR  
COPPER-NICKEL-SILICON (CuNiSi).
- 4 CONTACT FINISH: .000030 GOLD OVER .000030 NICKEL  
IN CONTACT AREA .000150 MIN BRIGHT TIN-LEAD  
(93/7) ON POSTS.
- 5 LETTERS INDICATING OUTSIDE ROWS AND NUMBERS  
INDICATING END CAVITIES MARKED THIS AREA.
- 6 LINES INDICATING EVERY FIVE CAVITIES MARKED  
ON MATING FACE.
- 7 DATUM AND BASIC DIMENSIONS ESTABLISHED BY CUST.
- 8 CONTACT FINISH: .000030 GOLD OVER .000030 NICKEL  
IN CONTACT AREA .000150 MIN MATTE TIN  
PER ASTM-B-545 ON POSTS.



8	6.900	69	7.024	7.125	7.450	7.750	210	-	5-448005-2
8	5.900	59	6.024	6.125	6.450	6.750	180	-	5-448005-1
4	6.900	69	7.024	7.125	7.450	7.750	210	(774444-9)	448005-2
4	5.900	59	6.024	6.125	6.450	6.750	180	(774444-8)	448005-1
	F	E	D	C	B	A	POS	CUSTOMER P/N	PART NO

THIS DRAWING IS A CONTROLLED DOCUMENT.

DIMENSIONS: INCHES	TOLERANCES UNLESS OTHERWISE SPECIFIED:	DWN T. ALEXANDER 5-27-92	APVD W. FOLEY 6-1-92	NAME Tyco Electronics Corporation Harrisburg, PA 17105-3608
0 PLC ± -	1 PLC ± -	CHK D. MILLER 6-1-92	PRODUCT SPEC	SIZE A2
2 PLC ± -	3 PLC ± .010	APVD W. FOLEY 6-1-92	APPLICATION SPEC	CAGE CODE 00779
4 PLC ± -	ANGLES ± -	APVD W. FOLEY 6-1-92	WEIGHT -	DRAWING NO C=448005
MATERIAL - 2 3	FINISH - 4	CUSTOMER DRAWING		RESTRICTED TO -

SCALE 4:1 SHEET 1 of 1 REV D