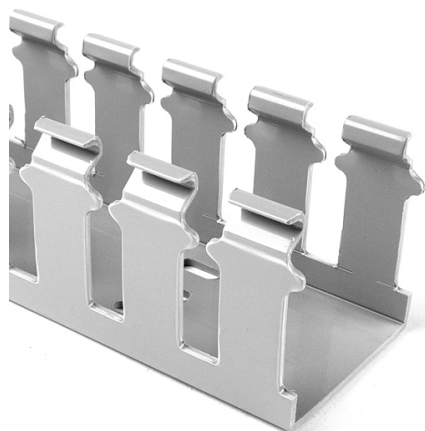


Specification Sheet

Part Number: 181-45010



Slotted Wall Wiring Duct, 4" X 5", Non-Adhesive, PVC, Gray, 60ft/Carton

Article Number	181-45010
Type	SL4X5
Color	Gray (GY)
Features & Benefits	<ul style="list-style-type: none">• Strong fingers prevent unwanted breaking.• Fingers are easily deflected outward, allowing ready positioning of the wires within the slotted wall duct.• Restricted opening prevents unintended removal of wires and permits any individual wire to be traced without disconnection.
Quantity Per	carton
Product Description	Pro-Duct slotted wall wiring duct features break-away fingers which provide additional access for wire leads. Each section of the duct is provided with two score lines. The upper score line is used to break away fingers when a wider opening is required. The lower score line allows the sidewall to be smoothly cut for joints and "T's".

Short Description	Slotted Wall Wiring Duct, 4" X 5", Non-Adhesive, PVC, Gray, 60ft/Carton
Global Part Name	SL4X5-PVC-GY
Technical Description	Non-Adhesive
Length L (Imperial)	6.0
Length L (Metric)	1.83
Width W (Imperial)	4.0
Width W (Metric)	101.6
Height H (Imperial)	5.07
Height H (Metric)	128.80
Mounting Hole Centers (Imperial)	4.0
Material	Polyvinylchloride (PVC)
Material Shortcut	PVC
Flammability	Self-Extinguishing
Halogen free	No
Operating Temperature (Metric)	+122°F (+50°C)

Reach Complaint(Article 33)

No

ROHS Complaint

Yes

Certification/Specification WEB

UL CSA EN 50085-1:2005 + A1:2013 EN 50085-2-3_1A

UL Recognized (US)

Yes

Package Quantity(Imperial)

60

Package Quantity (Metric)

18.30

Customs Number

3925900000