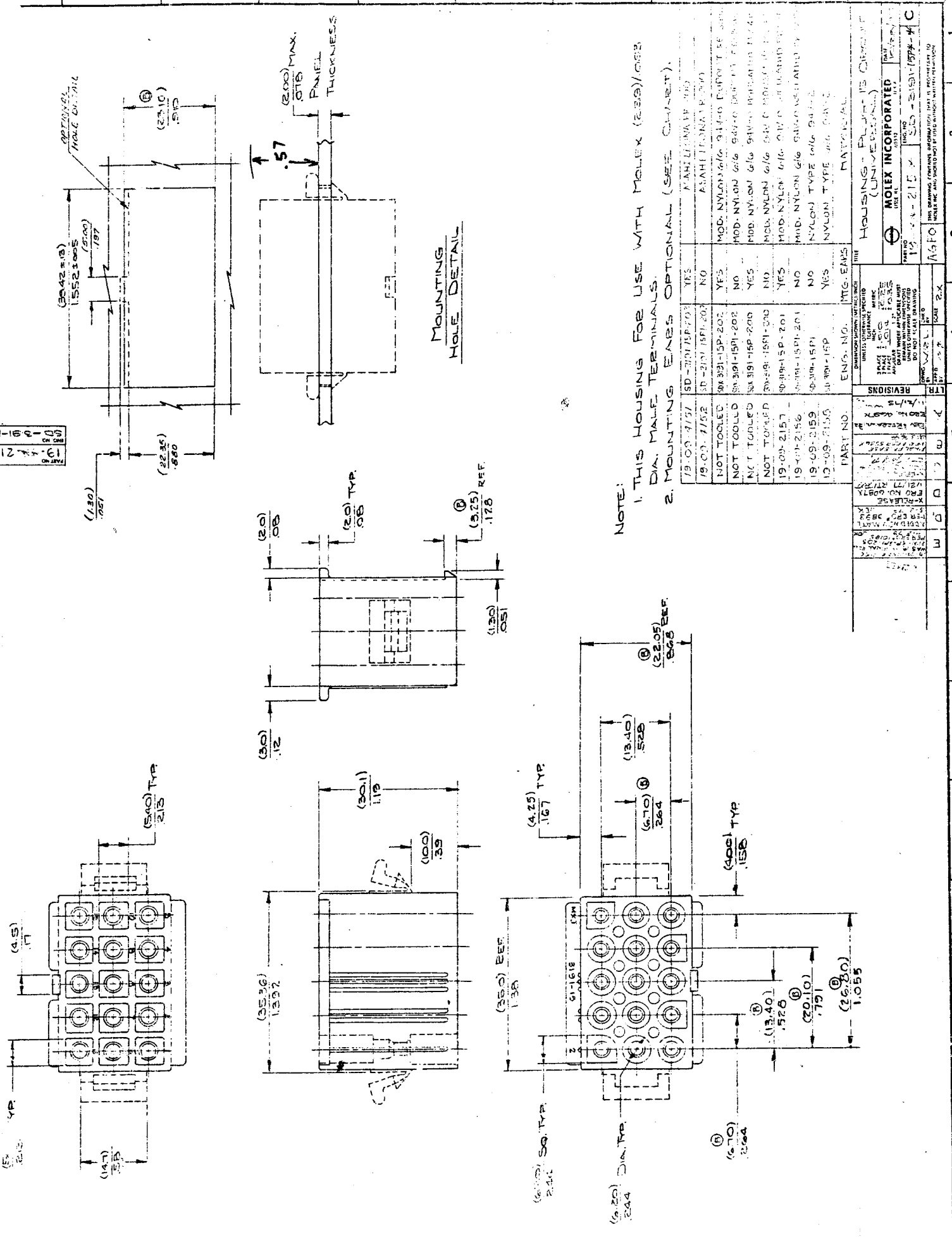


1  
2  
3  
4  
5  
6  
7  
8  
9  
10  
11  
12  
13



**MOUNTING HOLE DETAIL**

**NOTE:**  
 1. THIS HOUSING FOR USE WITH MOLEX (259) / (258) DIA. MALE TERMINALS.  
 2. MOUNTING EARS OPTIONAL (SEE CHART).

DATE	DESCRIPTION	BY	CHKD
19-09-2157	5D-201-15P-201	YES	PLASTIC MATERIAL
19-09-2152	5D-201-15P-202	NO	PLASTIC MATERIAL
NOT TOOLED	5D-201-15P-202	YES	MOD. NYLON 6/6 94% GARD. IMPREG. 11.24P
NOT TOOLED	5D-201-15P-202	NO	MOD. NYLON 6/6 94% GARD. IMPREG. 11.24P
NOT TOOLED	5D-201-15P-202	YES	MOD. NYLON 6/6 94% GARD. IMPREG. 11.24P
NOT TOOLED	5D-201-15P-201	NO	MOD. NYLON 6/6 94% GARD. IMPREG. 11.24P
19-09-2157	5D-201-15P-201	YES	MOD. NYLON 6/6 94% GARD. IMPREG. 11.24P
19-09-2156	5D-201-15P-201	NO	MOD. NYLON 6/6 94% GARD. IMPREG. 11.24P
19-09-2159	5D-201-15P-201	NO	NYLON TYPE 6/6 94% GARD. IMPREG. 11.24P
19-09-2156	5D-201-15P-201	YES	NYLON TYPE 6/6 94% GARD. IMPREG. 11.24P

**REVISIONS**

NO.	DATE	DESCRIPTION
1	19-09-2157	INITIAL RELEASE
2	19-09-2157	INITIAL RELEASE
3	19-09-2157	INITIAL RELEASE
4	19-09-2157	INITIAL RELEASE
5	19-09-2157	INITIAL RELEASE
6	19-09-2157	INITIAL RELEASE
7	19-09-2157	INITIAL RELEASE
8	19-09-2157	INITIAL RELEASE
9	19-09-2157	INITIAL RELEASE
10	19-09-2157	INITIAL RELEASE
11	19-09-2157	INITIAL RELEASE
12	19-09-2157	INITIAL RELEASE
13	19-09-2157	INITIAL RELEASE

**UNITED STATES PATENT AND TRADEMARK OFFICE**

**MOLEX INCORPORATED**  
 1300 S. GARDEN AVENUE  
 P.O. BOX 100  
 MOLEX CITY, ILLINOIS 62450

**MOLEX INCORPORATED**  
 1300 S. GARDEN AVENUE  
 MOLEX CITY, ILLINOIS 62450

**MOLEX INCORPORATED**  
 1300 S. GARDEN AVENUE  
 MOLEX CITY, ILLINOIS 62450

**MOLEX INCORPORATED**  
 1300 S. GARDEN AVENUE  
 MOLEX CITY, ILLINOIS 62450