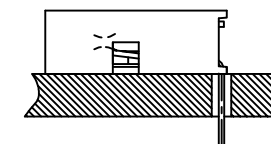
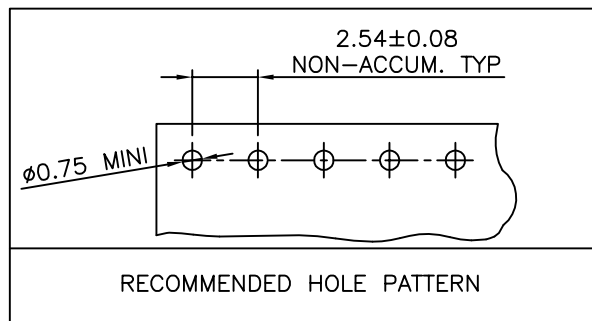
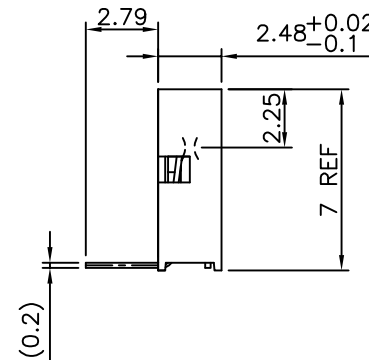
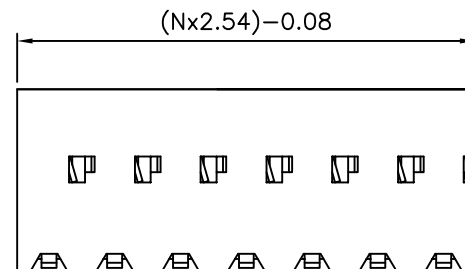
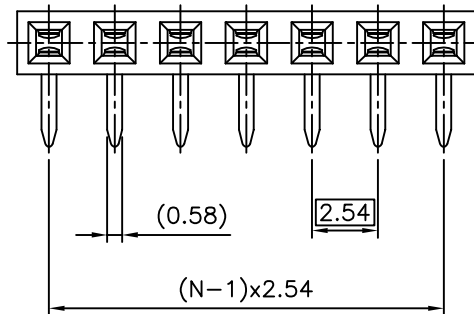


PRODUCT NUMBER
10042626-Y07GLF

- RoHS COMPATIBLE, SEE NOTE 5
- PLATING CODE
 - 3= 0.76µm GOLD ON CONTACT AREA.
 - 2µm MIN MATTE TIN ON TAIL.
 - 4= 2µm MIN MATTE TIN FULL PLATED
 - 1.27µm Ni MIN UNDERPLATING



NOTES:

- 1 - HOUSING MAT'L: THERMOPLASTIC GLASS FILLED FLAME RETARDANT PER UL 94 V-0
HIGH TEMPERATURE: COLOR BLACK.
- 2 - TERMINAL MATERIAL: PHOSPHOR BRONZE.
- 3 - PACKED IN PLASTIC TUBE.
- 4 - TO DETERMINE DIMENSIONS:
N = NUMBER OF POSITIONS
EXAMPLE: 8 POS: (Nx2.54)-0.08=20.24 mm
- 5 - RoHS COMPATIBLE PRODUCT SPECIFICATIONS
 - a - PLATING:
 - "LF" MEANS THE PRODUCT IS LEAD-FREE, 2µm MINIMUM MATTE TIN OVER 1.27µm MINIMUM NICKEL UNDERPLATE.
 - b - MANUFACTURING PROCESS COMPATIBILITY
 - THE HOUSING WILL WITHSTAND EXPOSURE TO 260°C ±5°C SOLDER BATH TEMPERATURE FOR 5 SECONDS IN A WAVE SOLDER APPLICATION WITH A 1.6mm MIN THICK CIRCUIT BOARD.
 - c - LABELING:
 - MEETS PACKAGING SPECS AS PER GS-14-920
 - d - LEGAL STATEMENT: SEE GS-47-0004

mat'l. code SEE NOTES		surface ISO 1302	tolerance ISO 406 ISO 1101	projection	product family DUBOX
ltr	ecn no	dr	date	tolerances unless otherwise specified	title
A	F04-0386	DLE	04.12.17	angles	BtB RECEPT. VERT SR TMT RA
B	F06-0150	DLE	06.03.17	linear	
C	F06-0204	DLE	06.06.29	±2'	scale 5:1
D	F07-0164	DLE	07.03.29	dr	D LEGRAND 04.12.17
E	B-19123	LMU	14.10.21	engr	P NIZZI 04.12.17
F	F-23040	AMA	16.01.14	chr	D LE 04.12.17
				appd	P NZ 04.12.17
sheet index	revision sheet				dwg no 10042626
					sheet 1 of 1 size A3
					type CUSTOMER Drawing