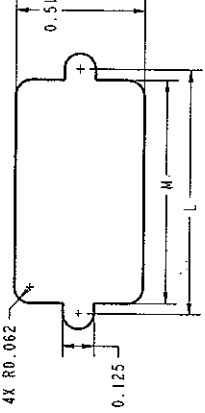
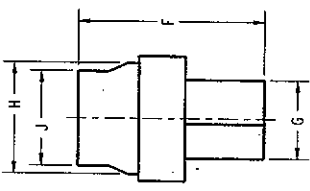


DRAWING REVISIONS			
REV	DOCUMENT	APP	DATE
A	DO 06-1033		APR 6 15-00

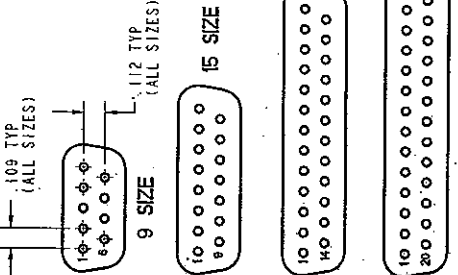
SIZE	A	B	C	D	E	F	G	H	J	K	PART NO.
9	1.209 [30.71]	.984 [24.99]	.668 [16.97]	.500 [12.70]	.592 [15.04]	.749 [19.02]	.314 [7.98]	.455 [11.56]	.380 [9.65]	.187 [4.75]	702 02 09 010
15	1.536 [39.01]	1.312 [33.32]	.995 [25.27]	.500 [12.70]	.918 [23.32]	.749 [19.02]	.314 [7.98]	.455 [11.56]	.380 [9.65]	.187 [4.75]	702 02 15 010
25	2.079 [52.81]	1.832 [47.04]	1.535 [38.99]	.500 [12.70]	1.462 [37.13]	.749 [19.02]	.314 [7.98]	.455 [11.56]	.380 [9.65]	.187 [4.75]	702 02 25 010
37	2.724 [69.19]	2.500 [63.50]	2.183 [55.45]	.500 [12.70]	2.114 [53.70]	.749 [19.02]	.314 [7.98]	.455 [11.56]	.380 [9.65]	.187 [4.75]	702 02 37 010

- NOTES:
- UNLESS OTHERWISE SPECIFIED, ALL DIMENSIONS ARE REFERENCE ONLY.
 - RECOMMEND THE USE OF 2 SCREWS 465 13 06 104 (M3) OR 460 18 45 106 (4-40) ON ALL CABLE TO CABLE SCREW MOUNT APPLICATIONS. THESE SCREWS TO BE USED ON BACK SIDE OF MOUNTING FLANGE TO INSURE RETENTION OF BUSHING.
 - INK MARK PER EM-9 THE "CINCH" LOGO PER EM-40, CINCH CATALOG NUMBER PER BOM AND "RoHS" AND DATE CODE PER EM-4, 1/16 HIGH CHARACTERS. METHOD 19 OF EM-9 IS PREFERRED METHOD.
 - SMALLEST UNIT PACKAGE MUST BE MARKED PER EM-25 FIGURE 1, PARAGRAPH 7 AND FIGURE 3.
 - RoHS NON COMPLIANT PART NO.'S: 232 33 09 000, 232 33 15 000, 232 33 25 000 AND 232 33 37 000.



RECOMMENDED PANEL CUT-OUT

SIZE	L	M
9	.984 [24.99]	.900 [22.86]
15	1.312 [33.32]	1.202 [30.53]
25	1.832 [47.04]	1.743 [44.27]
37	2.500 [63.50]	2.391 [60.73]



CONTACT ARRANGEMENT - AS VIEWED FROM ENGAGING SIDE

ROHS COMPLIANT

ENGLISH INCHES		PRO/VE	
DO NOT SCALE DRAWING	DATE	DATE	SCALE
UNLESS OTHERWISE SPECIFIED, ALL DIMENSIONS ARE IN INCHES (1"=25.4MM)	1/27/06	1/27/06	2:1
DESIGN ENGINEER	J. JIMENEZ	PROJECT NUMBER	C14690-6
DESIGN ENGINEERING MGR.	A. BALLI	DRAWING NUMBER	702 02 09 010
WIG. ENGINEERING	A. BALLI	CAGE CODE (NO. 157)	71785 B
QUALITY ASSURANCE	M. CRUZ	SCALE	2:1
APPROVED BY:	R. QUIROZ	SHEET 1 OF 2	

Cinch
D-SUB ALL PLASTIC IDC T-SERIES
PLUG ASSEMBLY

INCORPORATED BY:
JIMENEZ
1785 FINLEY RD
LOMBARD, IL 60148