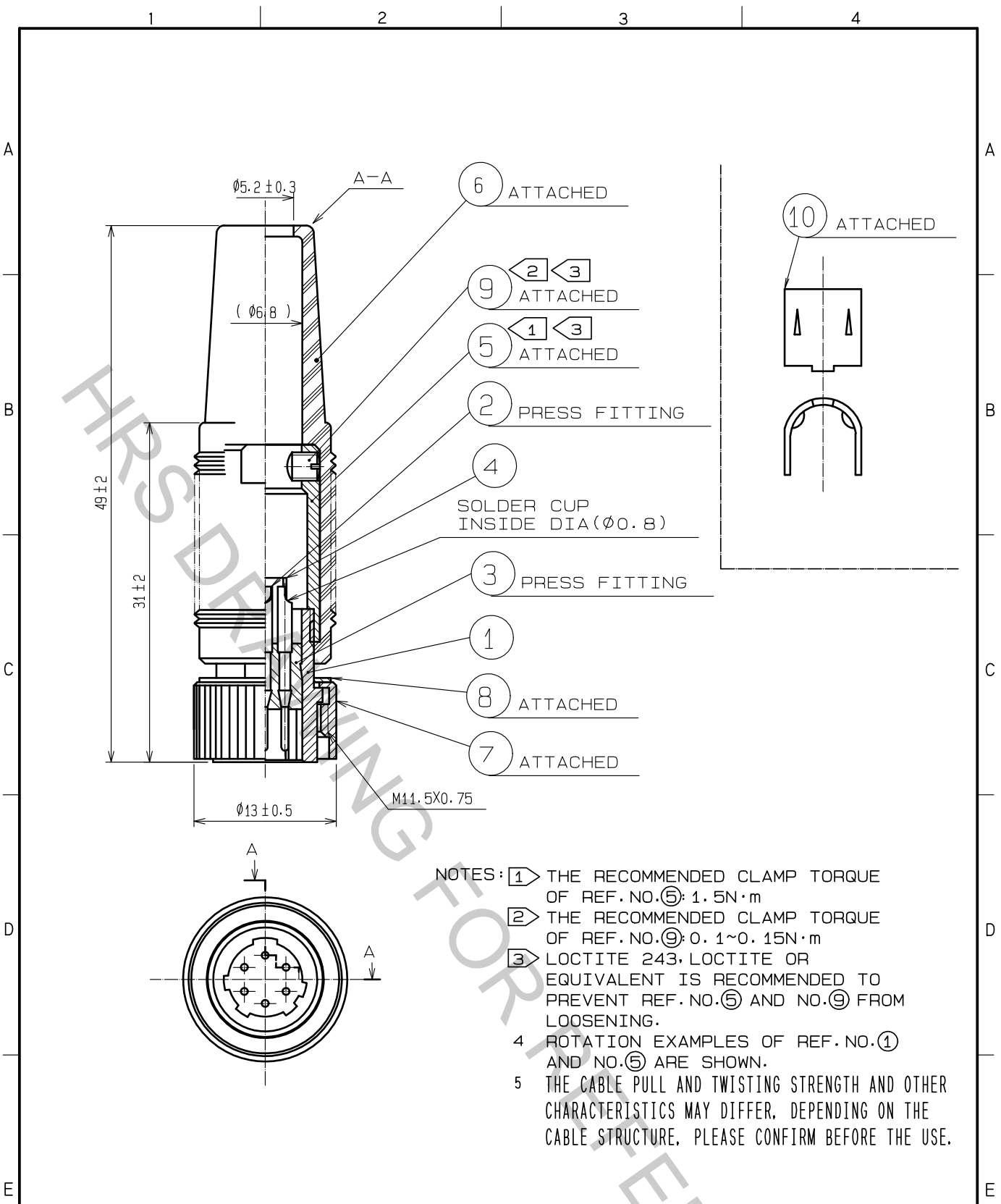


Aug.1.2018 Copyright 2018 HIROSE ELECTRIC CO., LTD. All Rights Reserved.
 In case that the application demands a high level of reliability, such as automotive,
 please contact a company representative for further information.



- NOTES:
- ① THE RECOMMENDED CLAMP TORQUE OF REF. NO. ⑤: 1.5N·m
 - ② THE RECOMMENDED CLAMP TORQUE OF REF. NO. ⑨: 0.1~0.15N·m
 - ③ LOCTITE 243, LOCTITE OR EQUIVALENT IS RECOMMENDED TO PREVENT REF. NO. ⑤ AND NO. ⑨ FROM LOOSENING.
 - 4 ROTATION EXAMPLES OF REF. NO. ① AND NO. ⑤ ARE SHOWN.
 - 5 THE CABLE PULL AND TWISTING STRENGTH AND OTHER CHARACTERISTICS MAY DIFFER, DEPENDING ON THE CABLE STRUCTURE. PLEASE CONFIRM BEFORE THE USE.

5	BRASS	NICKEL PLATING	10	BRASS	
4	FLUORO		9	STEEL	NICKEL PLATING JIS B 1117 M2.6X0.45X3 SLOTTED SET SCREWS
3	POLYACSTAL		8	BRASS	CHROME PLATING
2	BRASS	SURFACE PLATING:GOLD PLATING 0.2µm min. UNDER PLATING:NICKEL PLATING 3µm min.	7	BRASS	CHROME PLATING
1	ZINC ALLOY	NICKEL PLATING	6	CR	(BLACK)
NO.	MATERIAL	FINISH . REMARKS	NO.	MATERIAL	FINISH . REMARKS

UNITS mm		SCALE 2 : 1	COUNT 	DESCRIPTION OF REVISIONS	DESIGNED	CHECKED	DATE
HIROSE ELECTRIC CO., LTD.		APPROVED :HY. KOBAYASHI 18.02.22	CHECKED :HY. KOBAYASHI 18.02.22	DESIGNED :TH. KAMEYA 18.02.21	DRAWN :TH. KAMEYA 18.02.21	DRAWING NO. EDC-006634-31-00	PART NO. SR30-10PG-6P(31)
				CODE NO. CL103-0273-0-31	1/1		