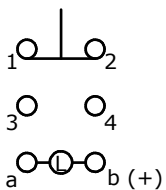
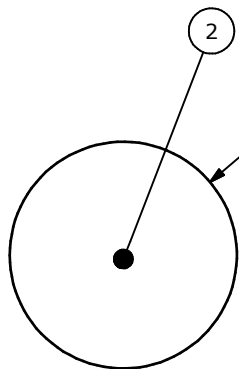
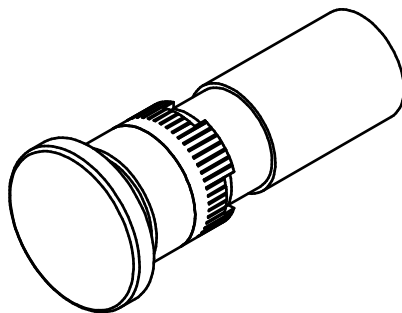


PANEL MOUNTING



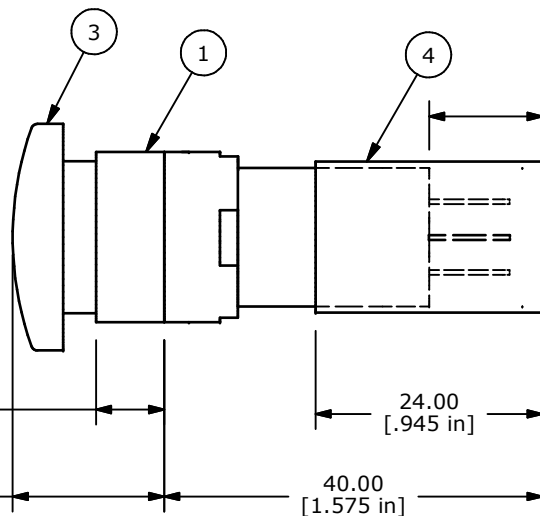
CONTACT CONFIGURATION



2
Ø24.00
[.945 in]

7.20
[.283 in]

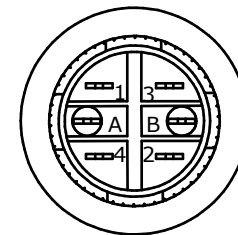
16.00
[.630 in]



12.00
[.472 in]

24.00
[.945 in]

40.00
[1.575 in]



PARTS LIST

ITEM	QT	PART NUMBER	DESCRIPTION
1	1	F040015	P16EER11
2	1	F050412	50-004-12 (RED NEON LAMP)
3	1	F051212	50-012-41 (MUSHROOM HEAD) RED
4	1	F051601	P16 PLASTIC TERMINAL PROTECTOR

NOTE:

1. ALL DIMENSIONS IN MM [INCH]
2. GENERAL TOLERANCE: X.X=±0.4
X.XX=±0.25
3. TERMINAL NUMBERS FOR REF ONLY
- ▲4. CONTACT RATING: 5A@ 250VAC
6A@ 24VDC
8A@ 125VAC- UL, CSA
5. ELECTRICAL LIFE: 50,000 OPERATIONS
6. INSULATION RESISTANCE: 1,000 MEGA-OHM MIN.
7. OPERATING TEMP.: -25°C to 55°C
8. ▲ DENOTES CRITICAL PARAMETER.
9. 2002/95/EC (ROHS) COMPLIANT
10. NEON LAMP: 110V AC (RED)



B	17828	UPDATED ITEM 3 IN PARTS LIST	10/30/07	BF
REV	PCR NO	DESCRIPTION	DATE	BY

TITLE P16EER1FREDRED				
SCALE	DATE	DR	DWG	REV
2:1	10/31/2007	BF	XF0738P	B

THE INFORMATION CONTAINED IN THIS DOCUMENT IS PROPRIETARY TO E-SWITCH AND IS NOT TO BE COPIED OR TRANSFERRED