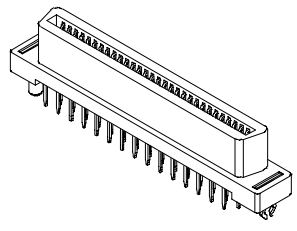
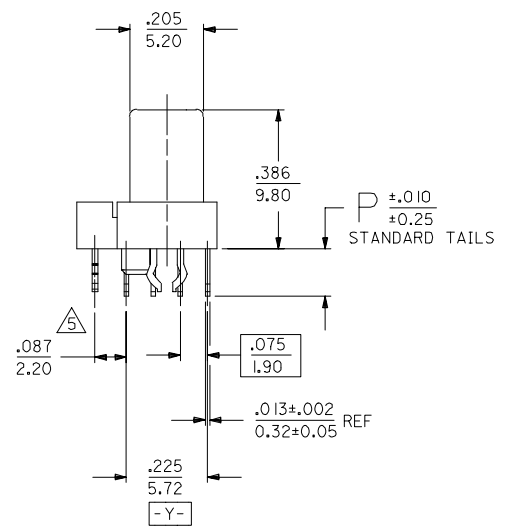
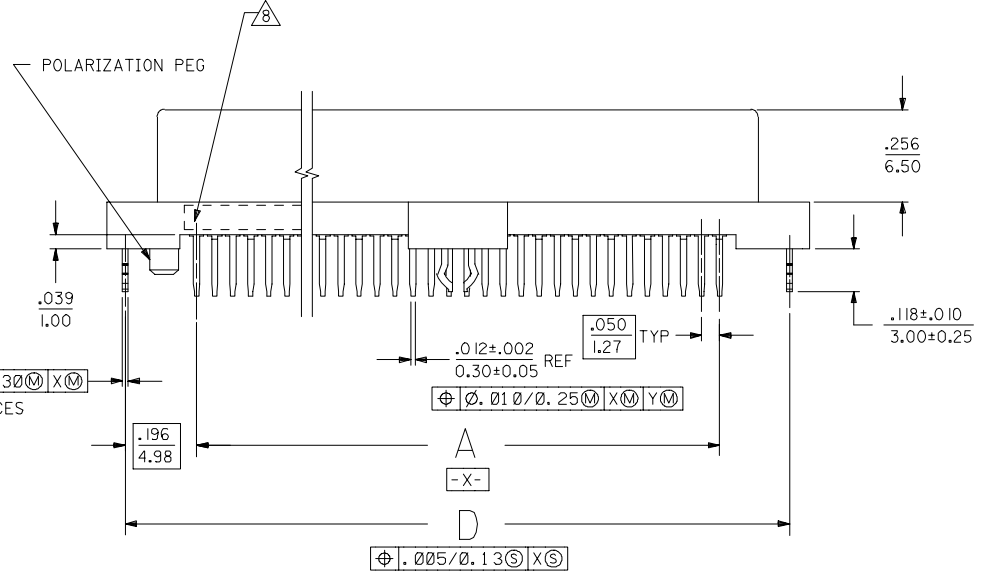


NOTES:

- 1) MATERIALS:
HOUSING- LCP, GLASS FILLED, 94V-0, BLACK.
TERMINALS- COPPER ALLOY
METAL PEGS- COPPER ALLOY
- 2) FINISH:
TERMINALS:
.000030/(0.00076) MINIMUM GOLD IN CONTACT AREA OVER
.000050/(0.00127) MINIMUM TIN IN TAIL AREA OVER
.000075/(0.00191) MINIMUM NICKEL UNDERPLATE OVERALL.
- 3) ASSEMBLY MATES WITH MOLEX P/N SDA-71661-****.
- 4) CONFORMS TO PRODUCT SPECIFICATION PS-71660.
- 5) CENTER PEG IS ONLY ON I20 AND I30 CIRCUIT ASSEMBLIES.
- 6) RECOMMENDED P.C. BOARD THICKNESS IS .062 (1.6).
- 7) CONNECTOR WILL ACCEPT MATING TO A P.C. BOARD WITH A THICKNESS OF .062±.003.
- 8) FOUR DIGIT DATE CODE (WK YR), EXAMPLE => 26 96 LOCATED IN AREA INDICATED.
- 9) PRODUCT TO BE PACKAGED IN TUBES

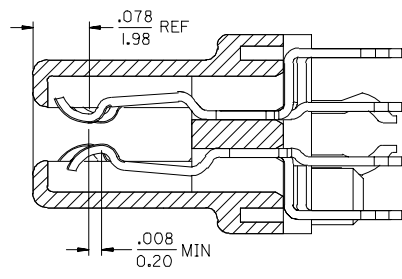
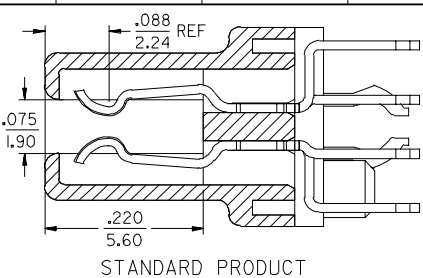


60 CIRCUIT ASSEMBLY SHOWN
SCALE 2:1

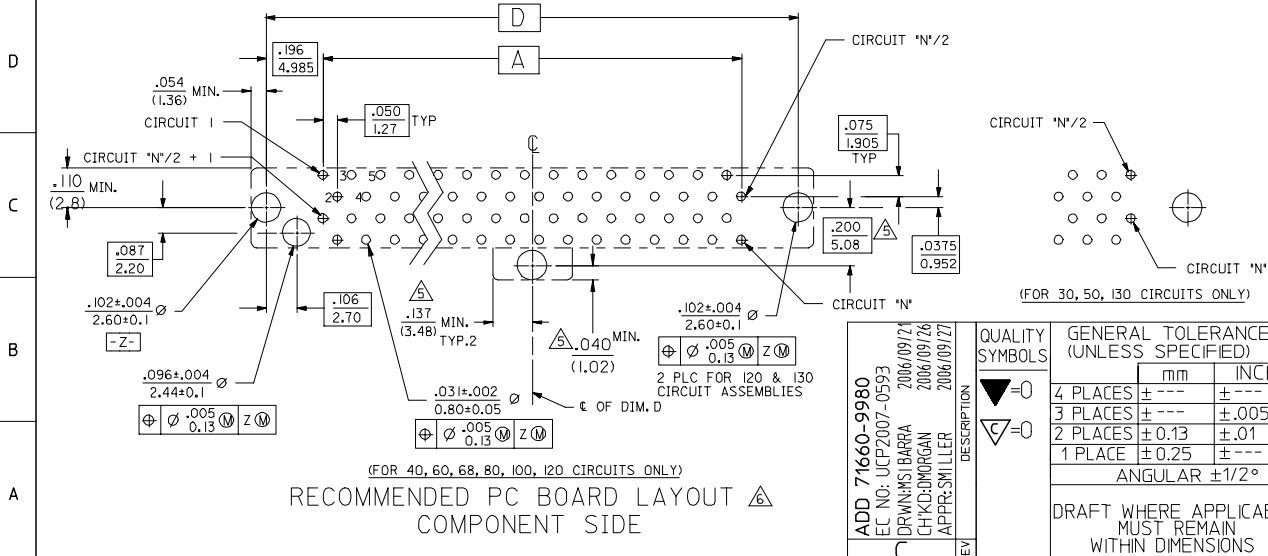
| | |
|-----|-----|
| 2 | C |
| 1 | C |
| SHT | REV |

| | | | | | | |
|---|--|--|-----------------|-------|--------------|--|
| ADD 71660-9980 EC NO: UCP2007-0593 DRWNS:IBARRA 2006/09/27 CHKD:DMORGAN 2006/09/26 APPR:SMILLER 2006/09/27 REV DESCRIPTION | QUALITY SYMBOLS | GENERAL TOLERANCES (UNLESS SPECIFIED) | DIMENSION STYLE | SCALE | DESIGN UNITS | THIRD ANGLE PROJECTION |
| | ▽=0 ▽=0 | mm INCH 4 PLACES ± --- ± --- 3 PLACES ± --- ±.005 2 PLACES ± 0.13 ±.01 1 PLACE ± 0.25 ± --- ANGULAR ±1/2° | IN/MM | 4:1 | INCH | DRAWN BY DATE RKADAMS 08/11/2004 CHECKED BY DATE BBARKER 08/11/2004 APPROVED BY DATE SMILLER 08/11/2004 MATERIAL NO. SEE TABLE DOCUMENT NO. SD-71660-006 SHEET NO. 1 OF 2 |
| | DRAFT WHERE APPLICABLE MUST REMAIN WITHIN DIMENSIONS | MOLEX INCORPORATED THIS DRAWING CONTAINS INFORMATION THAT IS PROPRIETARY TO MOLEX INCORPORATED AND SHOULD NOT BE USED WITHOUT WRITTEN PERMISSION | | | | |
| | | | | | | |

| | 13 | 12 | 11 | 10 | 9 | 8 | 7 | 6 | 5 | 4 | | 3 | 2 | 1 |
|---|-------------|------------|-----------|---------------|---------------|---------------|---------------|-------------|---|---|--|---|---|---|
| | ITEM NUMBER | | CKT ('N') | A | B | C | D | P | ADVANCED TERMINALS / CKTS SEE SECTION X-X "FMLB OPT" | | | | | |
| J | | | 30 | .700 (17.78) | .918 (23.32) | 1.199 (30.45) | 1.092 (27.75) | .134 (3.40) | N/A | | | | | |
| | | | 40 | .950 (24.13) | 1.168 (29.67) | 1.449 (36.80) | 1.342 (34.10) | | | | | | | |
| | | | 50 | 1.200 (30.48) | 1.418 (36.02) | 1.699 (43.15) | 1.592 (40.45) | | | | | | | |
| | | 71660-9960 | 60 | 1.450 (36.83) | 1.668 (42.37) | 1.949 (49.50) | 1.842 (46.80) | | | | | | | |
| | | 71660-9968 | 68 | 1.650 (41.91) | 1.868 (47.45) | 2.149 (54.58) | 2.042 (51.88) | | | | | | | |
| | | 71660-9980 | 80 | 1.950 (49.53) | 2.168 (55.07) | 2.449 (62.20) | 2.342 (59.50) | | | | | | | |
| I | | | 100 | 2.450 (62.23) | 2.668 (67.77) | 2.949 (74.90) | 2.842 (72.20) | | | | | | | |
| | | | 120 | 2.950 (74.93) | 3.168 (80.47) | 3.449 (87.60) | 3.342 (84.90) | | | | | | | |
| | | | 130 | 3.200 (81.28) | 3.418 (86.82) | 3.699 (93.95) | 3.592 (91.25) | | | | | | | |
| H | | | 30 | .700 (17.78) | .918 (23.32) | 1.199 (30.45) | 1.092 (27.75) | .110 (2.79) | N/A | | | | | |
| | | | 40 | .950 (24.13) | 1.168 (29.67) | 1.449 (36.80) | 1.342 (34.10) | | | | | | | |
| | | 71660-1450 | 50 | 1.200 (30.48) | 1.418 (36.02) | 1.699 (43.15) | 1.592 (40.45) | | | | | | | |
| | | | 60 | 1.450 (36.83) | 1.668 (42.37) | 1.949 (49.50) | 1.842 (46.80) | | | | | | | |
| | | 71660-1863 | 68 | 1.650 (41.91) | 1.868 (47.45) | 2.149 (54.58) | 2.042 (51.88) | | | | | | | |
| | | 71660-1083 | 80 | 1.950 (49.53) | 2.168 (55.07) | 2.449 (62.20) | 2.342 (59.50) | | | | | | | |
| | | | 100 | 2.450 (62.23) | 2.668 (67.77) | 2.949 (74.90) | 2.842 (72.20) | | | | | | | |
| G | | | 100 | 2.450 (62.23) | 2.668 (67.77) | 2.949 (74.90) | 2.842 (72.20) | | | | | | | |
| | | 71660-1491 | 120 | 2.950 (74.93) | 3.168 (80.47) | 3.449 (87.60) | 3.342 (84.90) | | | | | | | |
| | | | 130 | 3.200 (81.28) | 3.418 (86.82) | 3.699 (93.95) | 3.592 (91.25) | | | | | | | |
| F | | | 50 | 1.200 (30.48) | 1.418 (36.02) | 1.699 (43.15) | 1.592 (40.45) | .134 (3.40) | 2-4, 8-11, 14, 17, 20, 23, 26-29, 31, 32, 34, 36, 39, 42, 45, 48, 49 | | | | | |
| | | | 30 | .700 (17.78) | .918 (23.32) | 1.199 (30.45) | 1.092 (27.75) | | | | | | | |
| | | | 40 | .950 (24.13) | 1.168 (29.67) | 1.449 (36.80) | 1.342 (34.10) | | | | | | | |
| | | | 50 | 1.200 (30.48) | 1.418 (36.02) | 1.699 (43.15) | 1.592 (40.45) | | | | | | | |
| | | | 60 | 1.450 (36.83) | 1.668 (42.37) | 1.949 (49.50) | 1.842 (46.80) | | | | | | | |
| | | | 68 | 1.650 (41.91) | 1.868 (47.45) | 2.149 (54.58) | 2.042 (51.88) | | | | | | | |
| | | | 80 | 1.950 (49.53) | 2.168 (55.07) | 2.449 (62.20) | 2.342 (59.50) | | | | | | | |
| E | | | 100 | 2.450 (62.23) | 2.668 (67.77) | 2.949 (74.90) | 2.842 (72.20) | | | | | | | |
| | | | 120 | 2.950 (74.93) | 3.168 (80.47) | 3.449 (87.60) | 3.342 (84.90) | | | | | | | |
| | | | 130 | 3.200 (81.28) | 3.418 (86.82) | 3.699 (93.95) | 3.592 (91.25) | | | | | | | |



SECTION X-X
SCALE - 8:1



| | | | | | | | | | | | |
|--|-------------------------------|---|------|---------------------------------|--|--------------|--|--------------|--|------------------------|--|
| ADD 71660-9980 FC NO: UCP2007-0593 DRAWN BY: BARBARA 2006/09/21 CHKD: JORGAN 2006/09/26 APPR: SMILLER 2006/09/27 | QUALITY SYMBOLS ▽=0 ▽=0 | GENERAL TOLERANCES (UNLESS SPECIFIED) | | DIMENSION STYLE | | SCALE | | DESIGN UNITS | | THIRD ANGLE PROJECTION | |
| | | mm | INCH | IN/MM | | 4:1 | | INCH | | | |
| DRAWN BY: BARBARA 2006/09/21 | | CHECKED BY: BBARKER 08/11/2004 | | APPROVED BY: SMILLER 08/11/2004 | | MATERIAL NO. | | DOCUMENT NO. | | SHEET NO. | |
| 2 PLCS FOR 120 & 130 CIRCUIT ASSEMBLIES | | ANGULAR ±1/2° | | SEE TABLE | | SD-71660-006 | | | | 2 | |
| DRAFT WHERE APPLICABLE MUST REMAIN WITHIN DIMENSIONS | | THIS DRAWING CONTAINS INFORMATION THAT IS PROPRIETARY TO MOLEX INCORPORATED AND SHOULD NOT BE USED WITHOUT WRITTEN PERMISSION | | | | | | | | | |