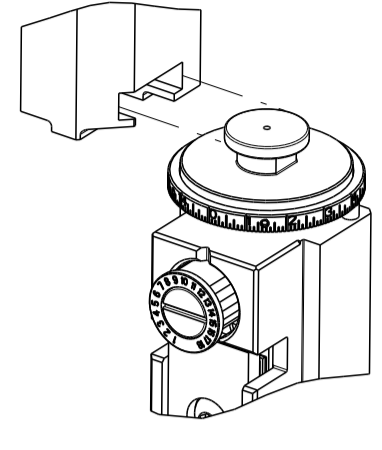


THIS DRAWING IS UNPUBLISHED. BY TYCO ELECTRONICS CORPORATION. ALL RIGHTS RESERVED.

SET UP GAUGE 2119599-1, LOC A, DIST 66. REVISIONS table with columns for P, LTR, DESCRIPTION, DATE, DWN, APVD.

APPLICATOR STYLE CONVERSION CHART. Table with columns for Part Number, Revision, Description, Feed Type, Convert To, and Part Numbers Required.



APPLICATOR DATA table with columns for Crimp Size, Wire, Insul, and Crimp Type.

Terminal Data: Hirose Terminal Hirose Crimp Specification. Includes wire strip length and insulation diameter range.

WIRE SIZE table with columns for Wire Size, Crimp Height, and Crimp Height Reference Setting.

- 1 RECOMMENDED SPARE PARTS
2 GREASE BEARING SURFACES LIGHTLY
3 LUBRICATE DAILY PER THE APPLICATOR INSTRUCTION SHEET SUPPLIED WITH THE APPLICATOR.
4 APPLICATOR SPECIFIC DATA TO BE ENTERED INTO BLANK MEMORY CHIP AT ASSEMBLY...

\*WARNING ON INSTALLATION, SET WIRE DISC, ITEM 40 TO LARGEST WIRE SIZE SETTING. USE OF SETTINGS BELOW MINIMUM REQUIRED CRIMP HEIGHT SETTING WILL CAUSE DAMAGE TO CRIMP TOOLING.

Table with 7 columns: -77, -7, -6, -5, -2, -1, PART NO, DESCRIPTION, ITEM NO.

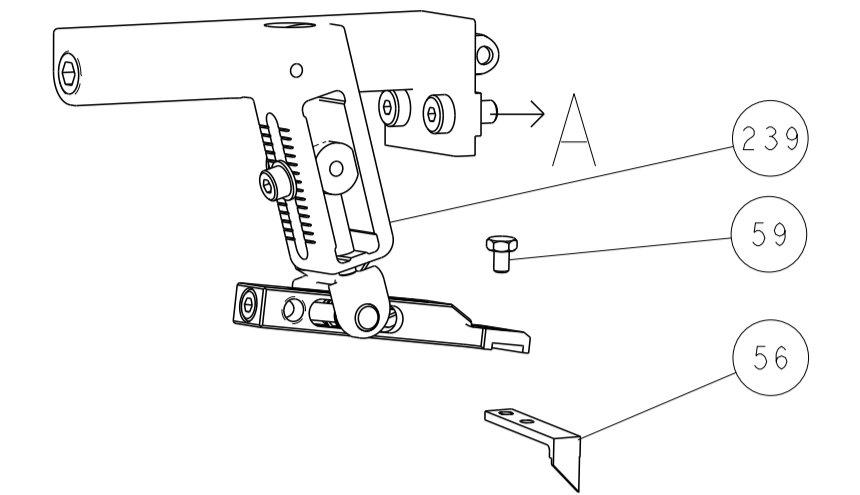
ATLANTIC VERSION Shown on sheets 1 of 4 & 2 of 4 (Pacific version shown on sheets 3 of 4 & 4 of 4)

Large parts list table with columns for Part No., Description, and Item No., listing various components like bushings, feed cams, and washers.

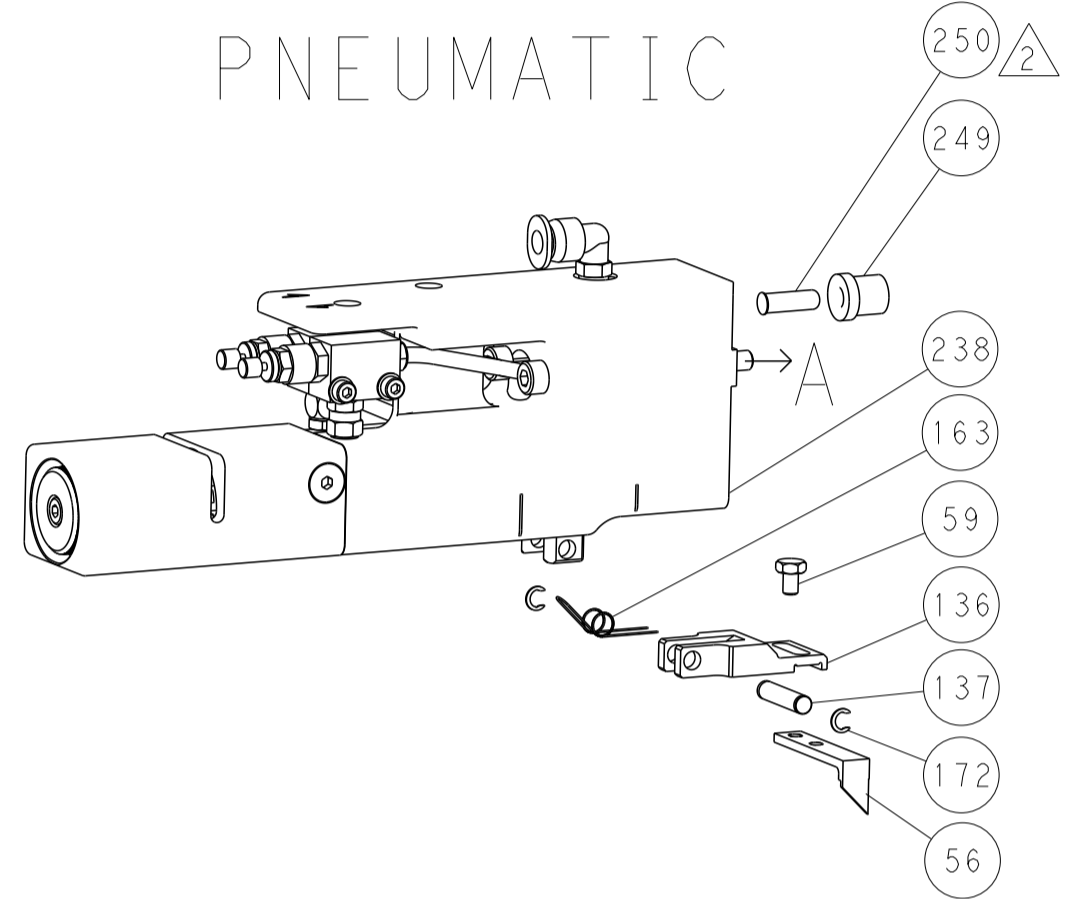
Technical drawing header/footer area including dimensions, tolerances, material, weight, and drawing information.

LOC		DIST		REVISIONS			
A	66	P	LTM	DESCRIPTION	DATE	OWN	APVD
		-		SEE SHEET 1			

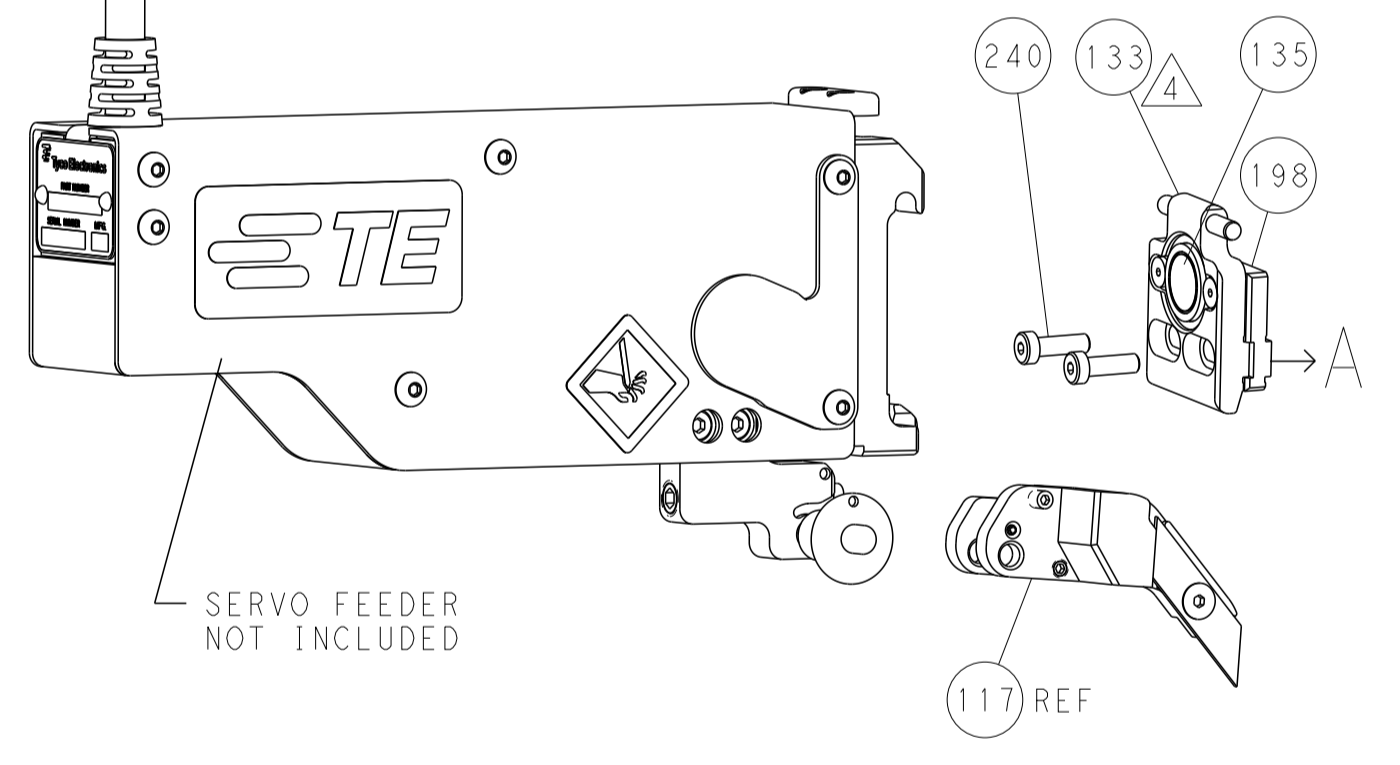
### FEED TYPE MECHANICAL



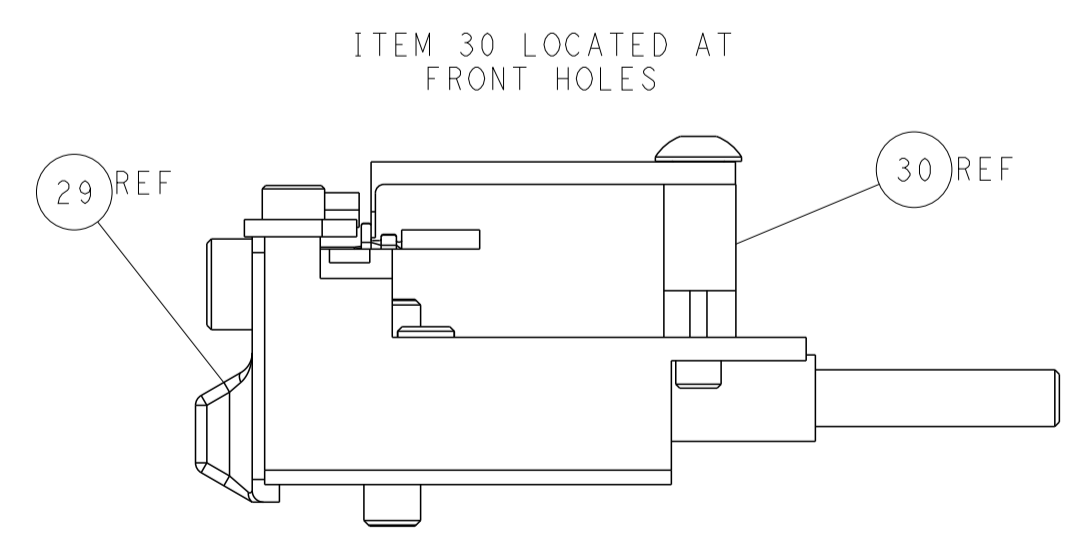
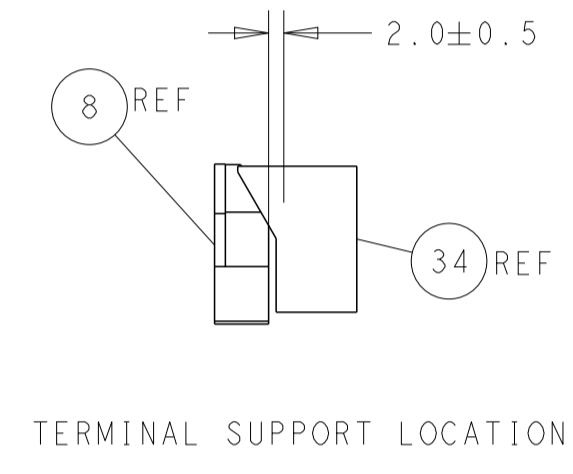
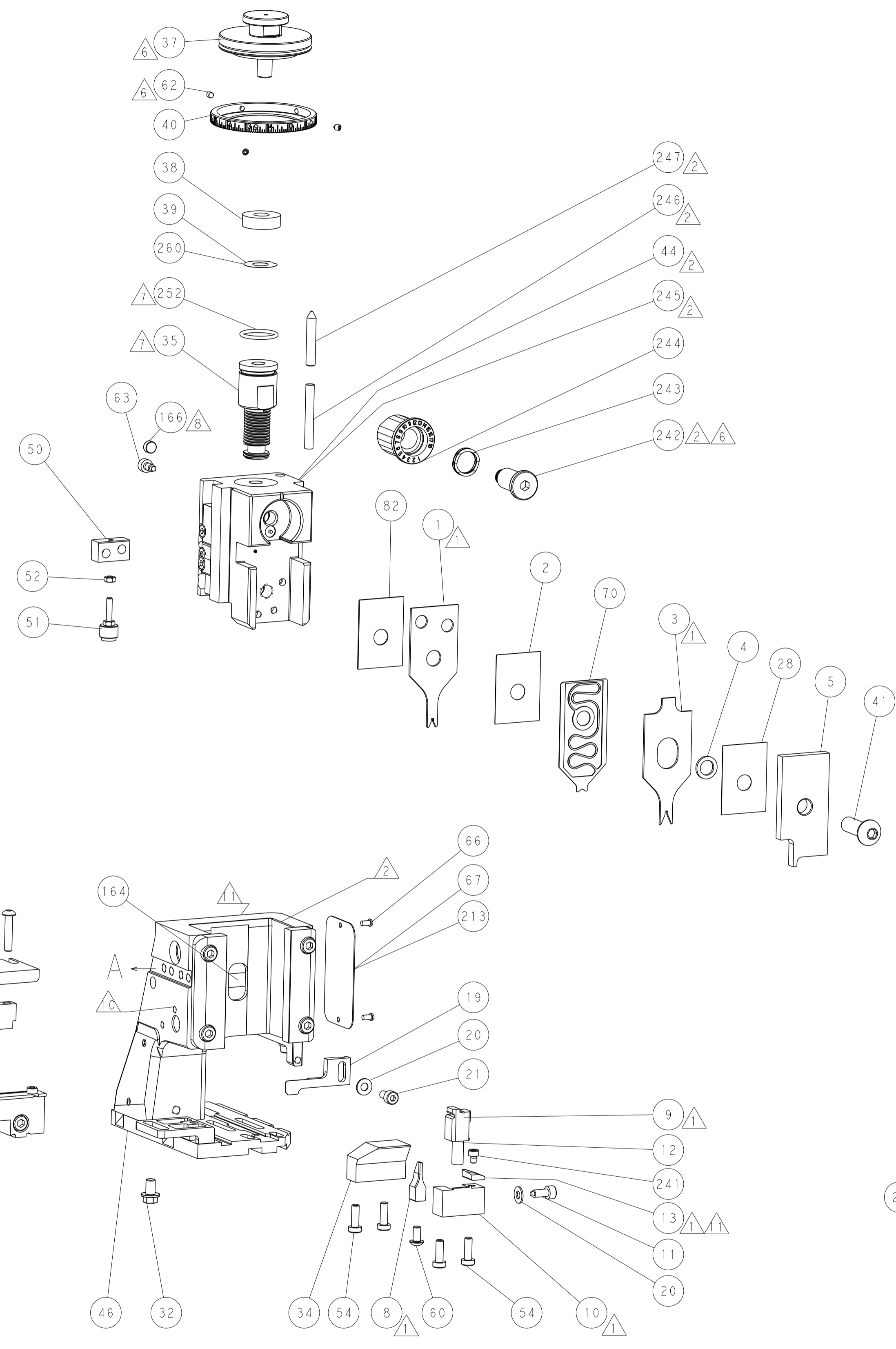
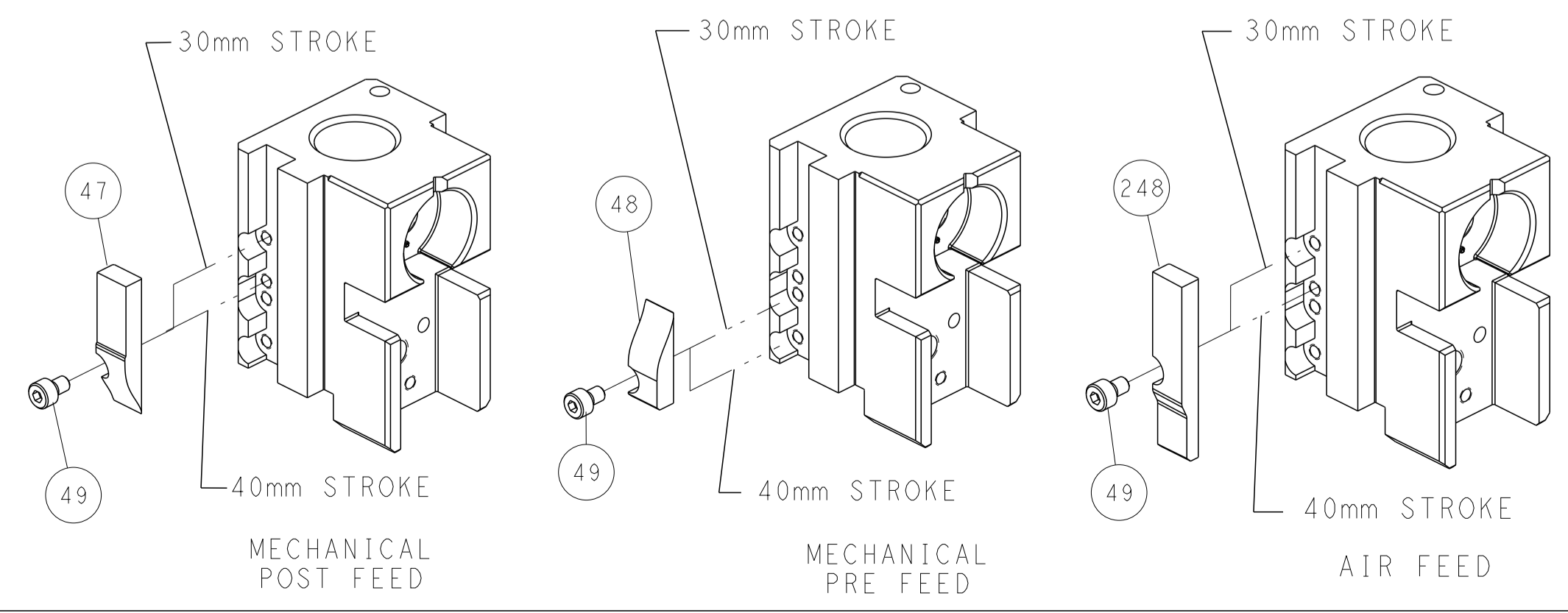
### PNEUMATIC



### SERVO LATCH PLATE



### CAM POSITIONS



FEED TRACK POSITION GUIDE BY INSULATION BARREL

**ATLANTIC VERSION**  
 Shown on sheets 1 of 4 & 2 of 4  
 (Pacific version shown on sheets 3 of 4 & 4 of 4)

<small>THIS DRAWING IS UNPUBLISHED. RELEASED FOR PUBLICATION. ALL RIGHTS RESERVED.</small> <small>IT IS THE BUYER'S RESPONSIBILITY TO CONTACT THE SUPPLIER FOR THE LATEST REVISIONS.</small>		DWN: J.HOU 05SEP2014 CHK: Y.YIN 05SEP2014 APVD: H.GUO 05SEP2014	<b>STE</b> TE Connectivity Harrisburg, PA 17105-3608
DIMENSIONS: mm TOLERANCES UNLESS OTHERWISE SPECIFIED: 0 PLC ± 1 PLC ± 2 PLC ± 3 PLC ± 4 PLC ± ANGLES FINISH ±		NAME: Ocean Side Feed Applicator PRODUCT SPEC: APPLICATION SPEC: WEIGHT:	SIZE: A1 CAGE CODE: 00779 DRAWING NO: 2266498 SCALE: 1:2 SHEET: 2 of 4 REV: B
MATERIAL:		RESTRICTED TO:	

Table with columns: PART NUMBER, REVISION, DESCRIPTION, FEED TYPE, CONVERT TO, PART NUMBERS REQUIRED. Includes a diagram of the applicator.

APPLICATOR DATA table with columns: CRIMP SIZE TYPE, WIRE SIZE, INSUL. SIZE, and APPLICATOR INSTRUCTIONS.

Terminal data and specifications: HIROSE TERMINAL, HIROSE CRIMP SPECIFICATION, WIRE STRIP LENGTH, INSULATION DIAMETER RANGE, and TERMINALS APPLIED.

WIRE SIZE vs CRIMP HEIGHT REFERENCE SETTING table.



- RECOMMENDED SPARE PARTS
GREASE BEARING SURFACES LIGHTLY
LUBRICATE DAILY PER THE APPLICATOR INSTRUCTION SHEET...
APPLICATOR SPECIFIC DATA TO BE ENTERED INTO BLANK MEMORY CHIP AT ASSEMBLY...
ADJUSTMENT OF THE STRIPPER...
APPLY PART NUMBER 1-23419-5 LOCTITE TO THREADS OF ITEM 62...
GREASE THREADS, GROOVE AND O-RING ON ITEMS 139 & 152...
MAGNET MUST BE ORIENTED CORRECTLY...
CRIMP HEIGHT REFERENCE SETTING WAS THE SETTING USED...
SPARE FEED CAM STORAGE LOCATION REFER TO INSTRUCTION SHEET...
TO CONVERT THE APPLICATOR TO A NON-CARRIER CUTTING STYLE...
TERMINAL LUBRICANT IS RECOMMENDED.

\*WARNING
ON INSTALLATION, SET WIRE DISC, ITEM 40 TO LARGEST WIRE SIZE SETTING. USE OF SETTINGS BELOW MINIMUM REQUIRED CRIMP HEIGHT SETTING WILL CAUSE DAMAGE TO CRIMP TOOLING.

Small table with columns: PART NO, DESCRIPTION, ITEM NO.

PACIFIC VERSION
Shown on sheets 3 of 4 & 4 of 4
(ATlantic version shown on sheets 1 of 4 & 2 of 4)

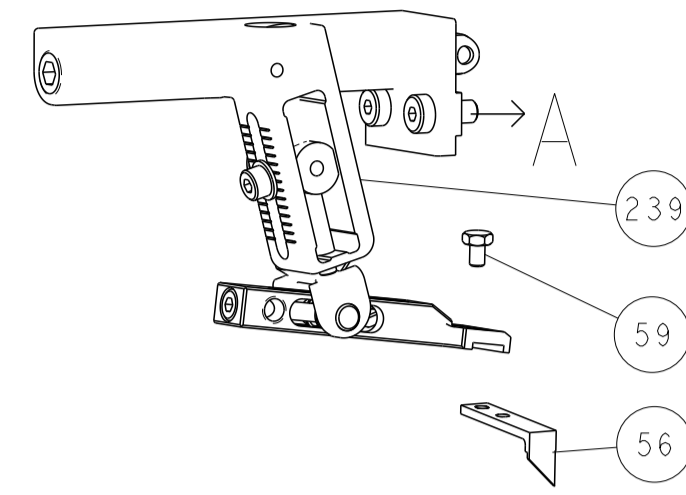
REVISIONS table with columns: P, LTR, DESCRIPTION, DATE, DWN, APVD.

Main assembly drawing table with columns: QTY, P, LTR, DESCRIPTION, DATE, DWN, APVD. Includes a detailed BOM list.

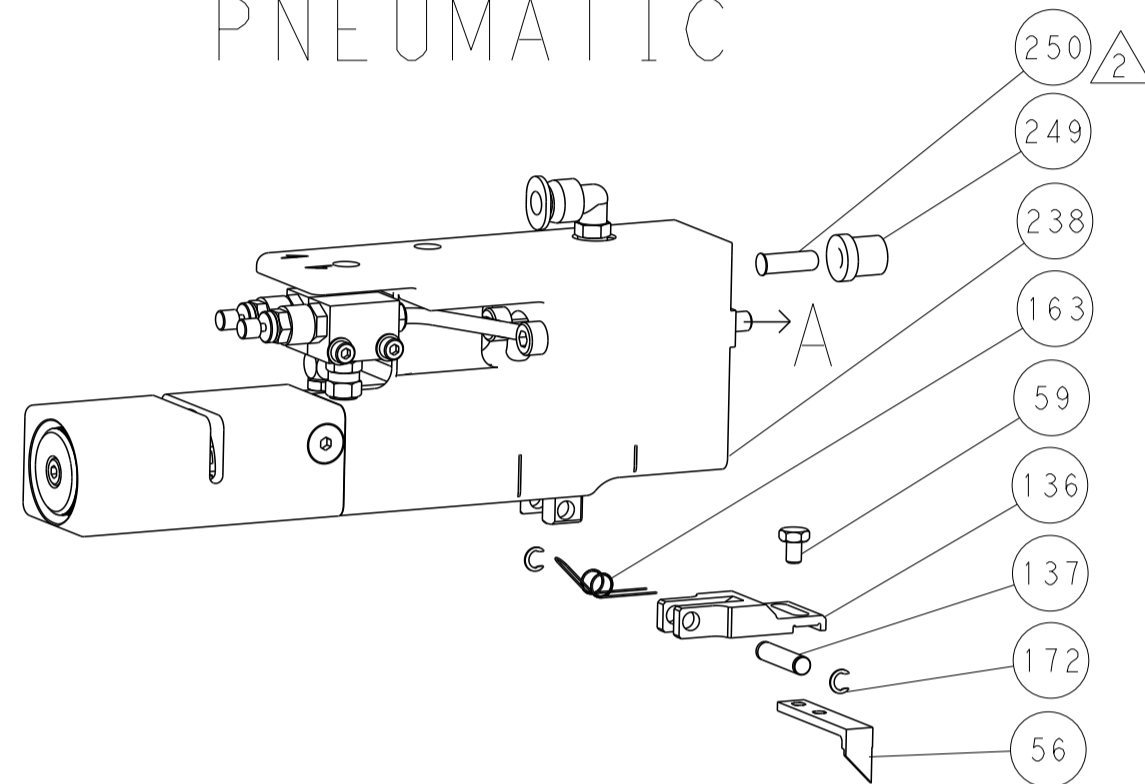
Technical drawing block containing: DIMENSIONS, TOLERANCES UNLESS OTHERWISE SPECIFIED, MATERIAL, FINISH, and a title block with STE logo and product information.

LOC		DIST		REVISIONS			
A	66	P	LTM	DESCRIPTION	DATE	OWN	APVD
		-		SEE SHEET 1			

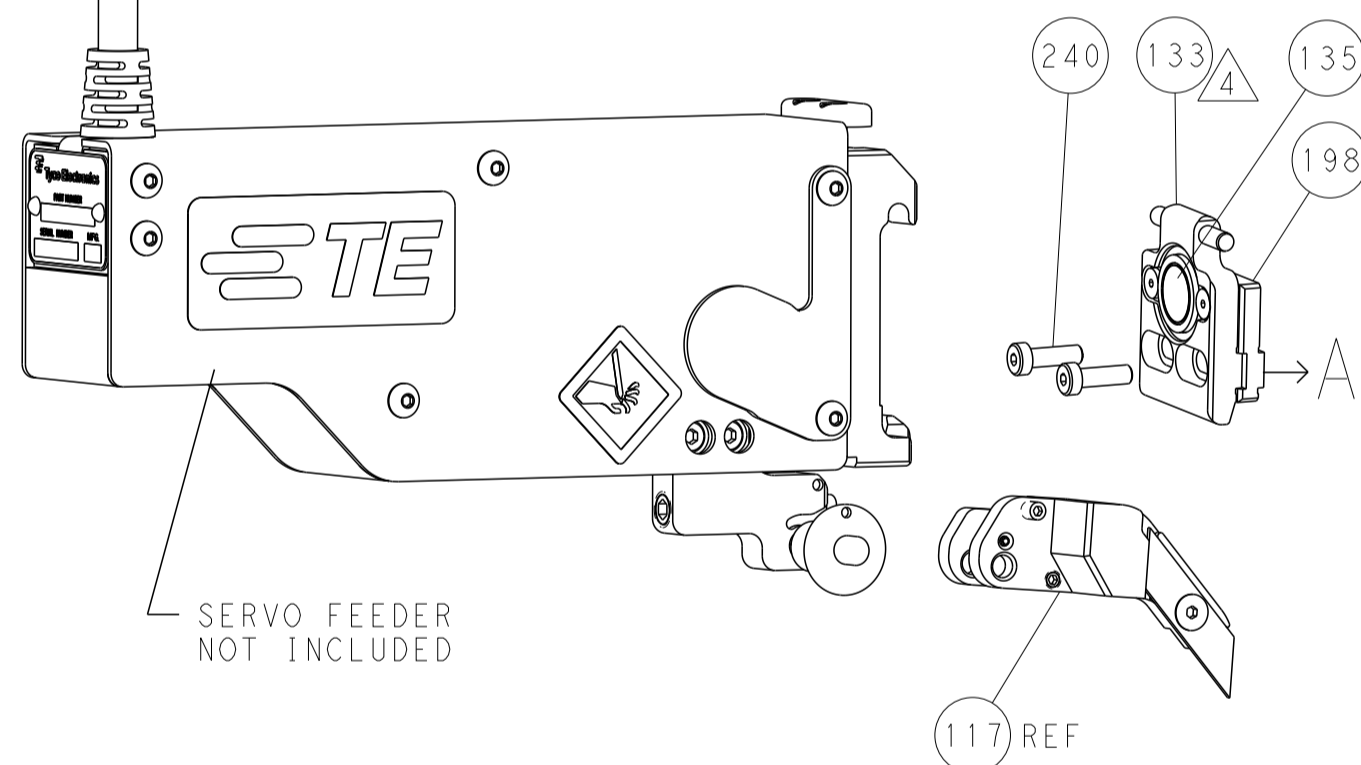
# FEED TYPE MECHANICAL



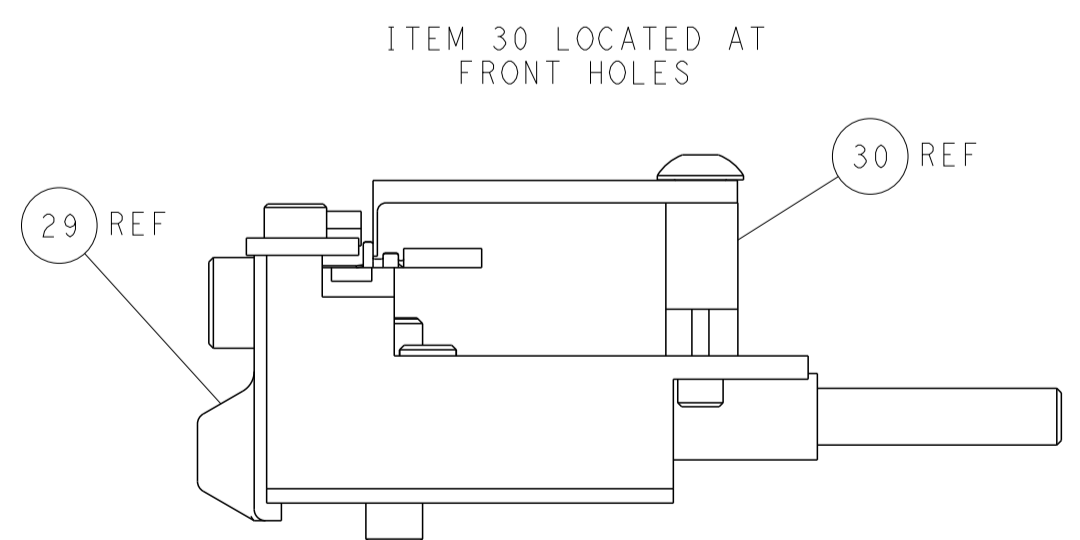
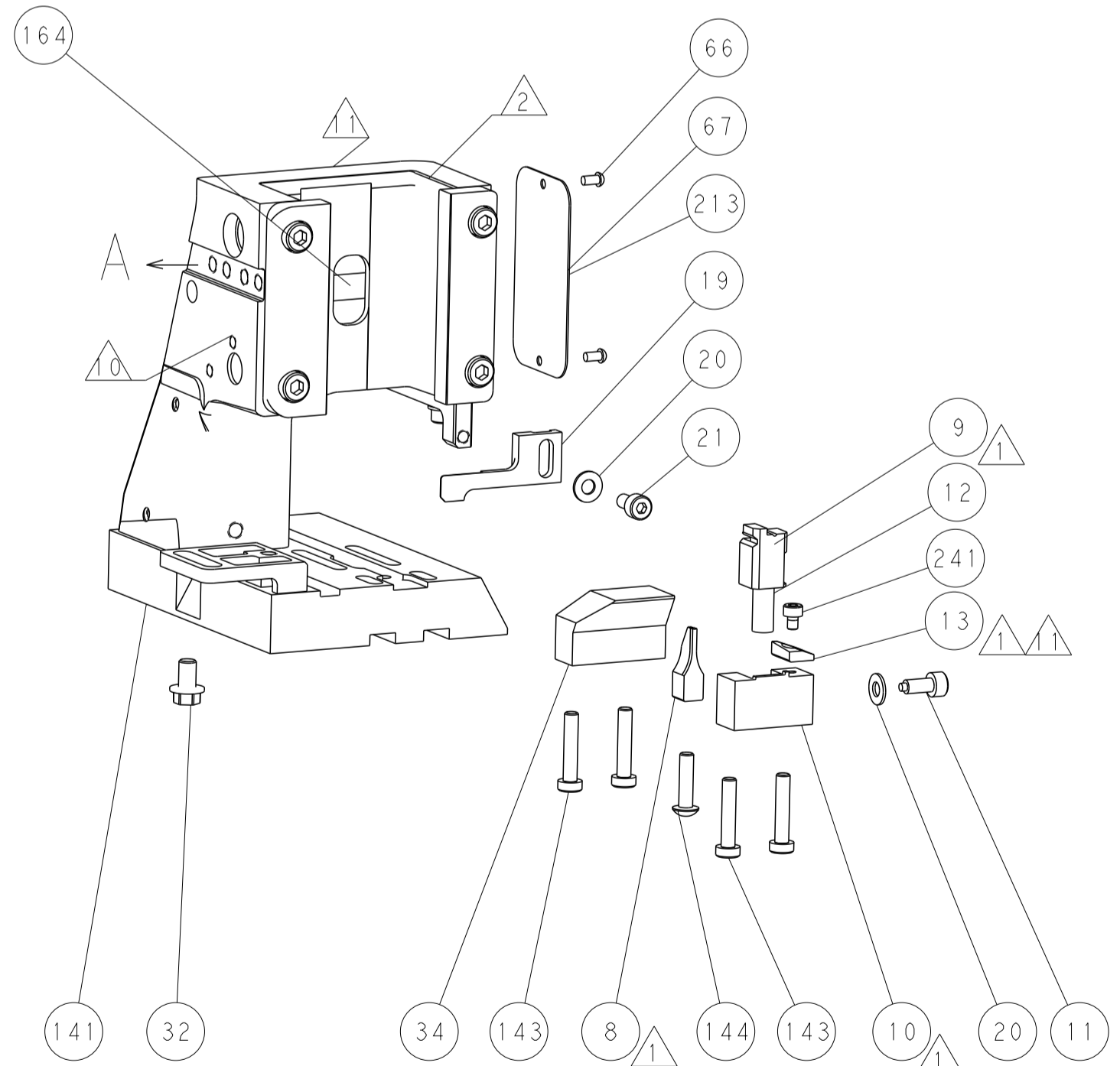
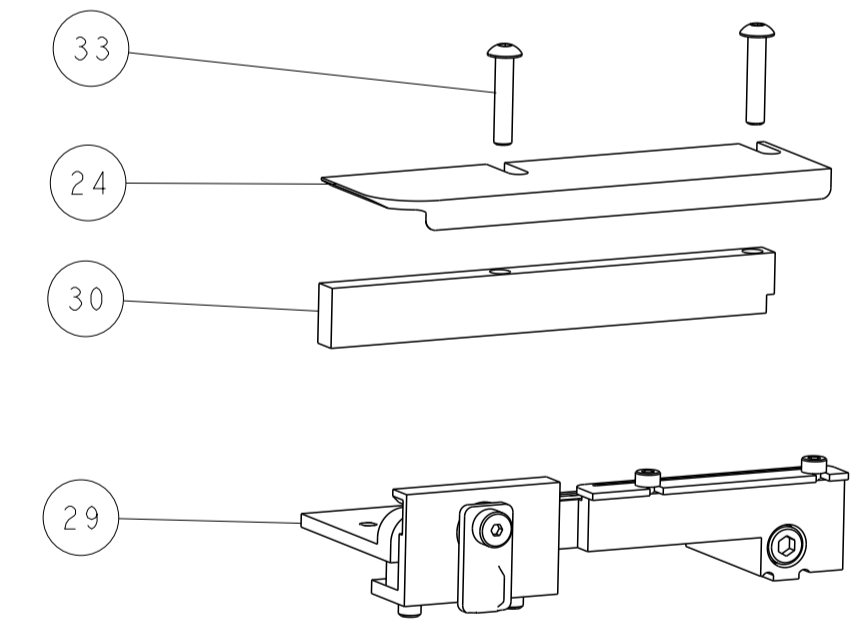
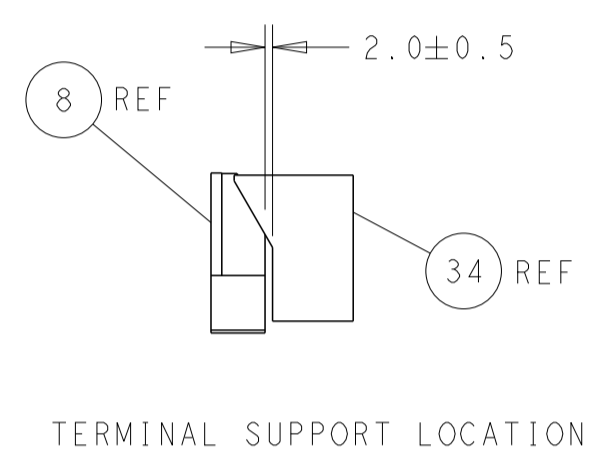
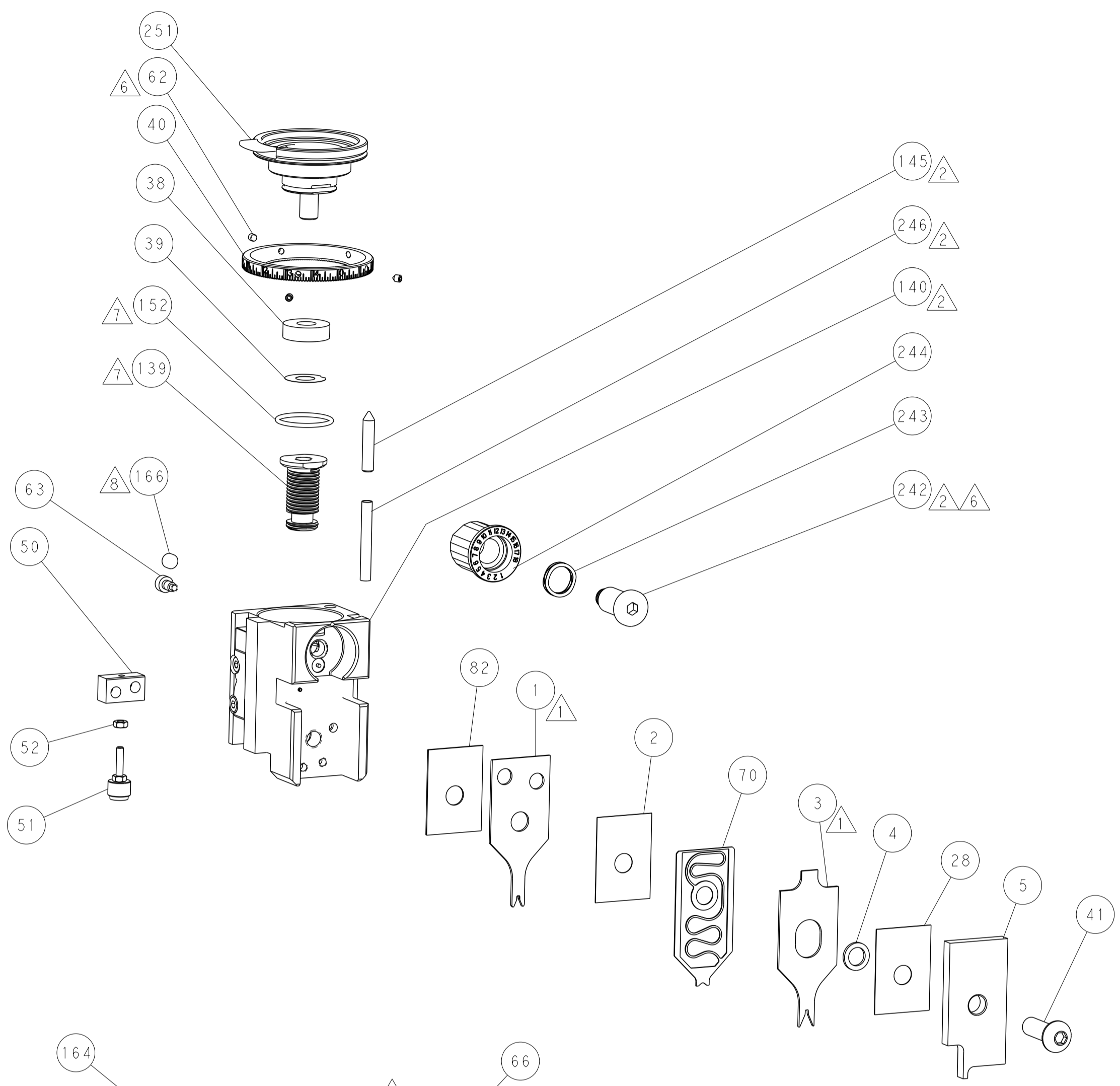
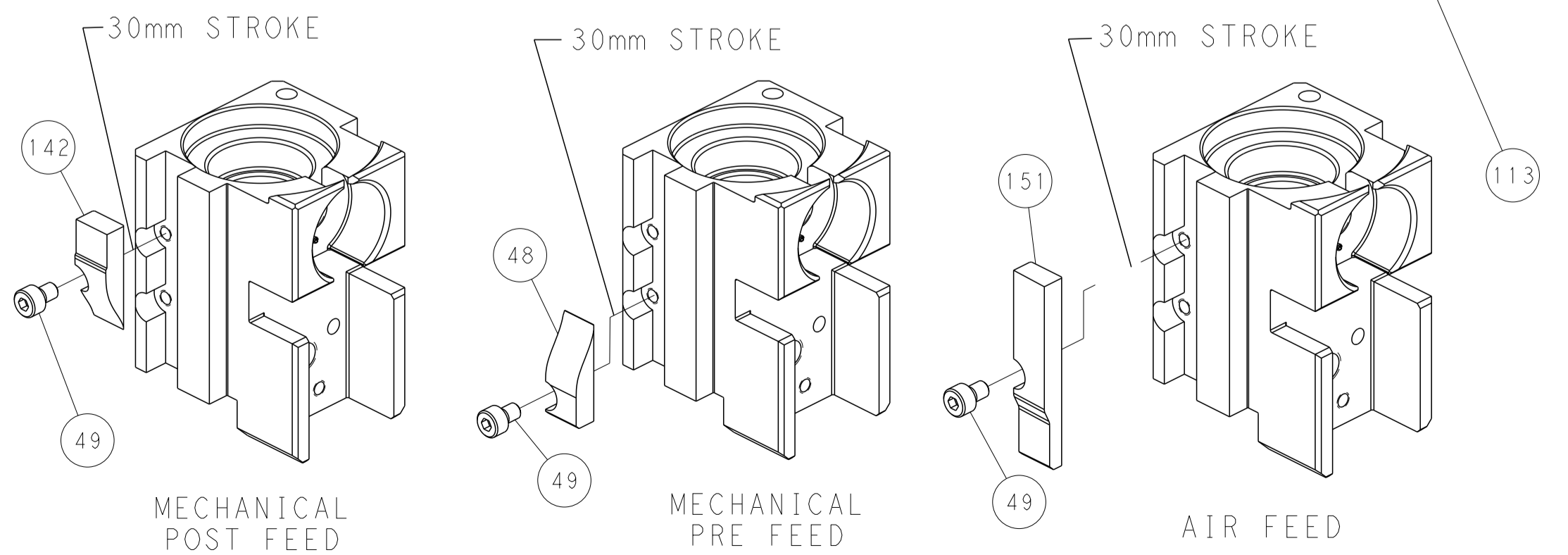
# PNEUMATIC



# SERVO LATCH PLATE



# CAM POSITIONS



FEED TRACK POSITION  
GUIDE BY INSULATION BARREL

**PACIFIC VERSION**  
 Shown on sheets 3 of 4 & 4 of 4  
 (Atlantic version shown on sheets 1 of 4 & 2 of 4)

DIMENSIONS:		TOLERANCES UNLESS OTHERWISE SPECIFIED:		DWG: J.HOU 05SEP2014		REV: Y.YIN 05SEP2014		NAME: Ocean Side Feed Applicator	
mm	0 PLC	±		SIZE	CAGE CODE	DRAWING NO	RESTRICTED TO		
	1 PLC	±		SCALE	1:2	SHEET 4 OF 4	REV B		
	2 PLC	±		MATERIAL		WEIGHT			
	3 PLC	±		FINISH		Customer Accessible Production Drawing			
	4 PLC	±							
	ANGLES	±							