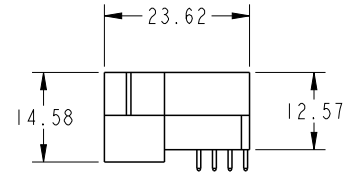
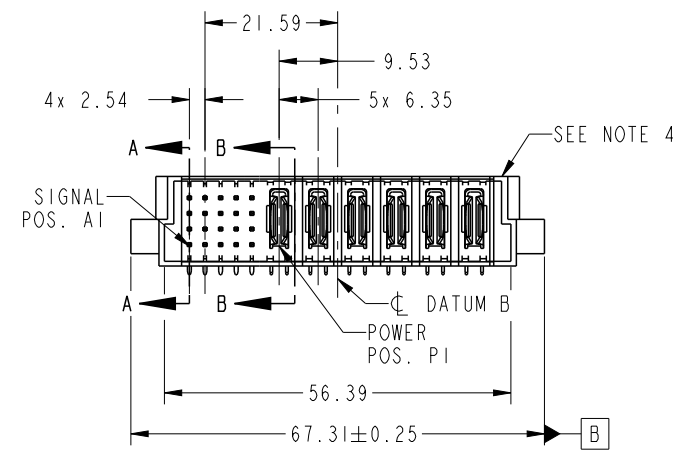
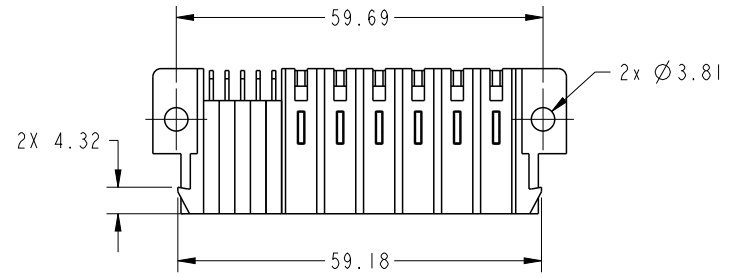
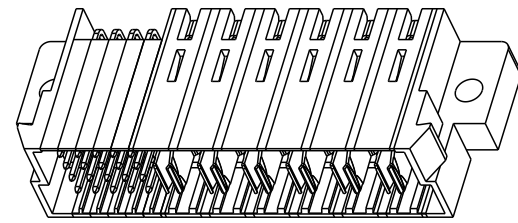


PRODUCT NO.	ROWS	SIGNAL					POWER						E2
		E1	5	4	3	2	1	P6	P5	P4	P3	P2	
51939-850-- NOTE 3	D C B A	UUUUUU	TTTTTTT	SSSSSS	RRRRR		PA	PA	PA	PA	PA	PA	



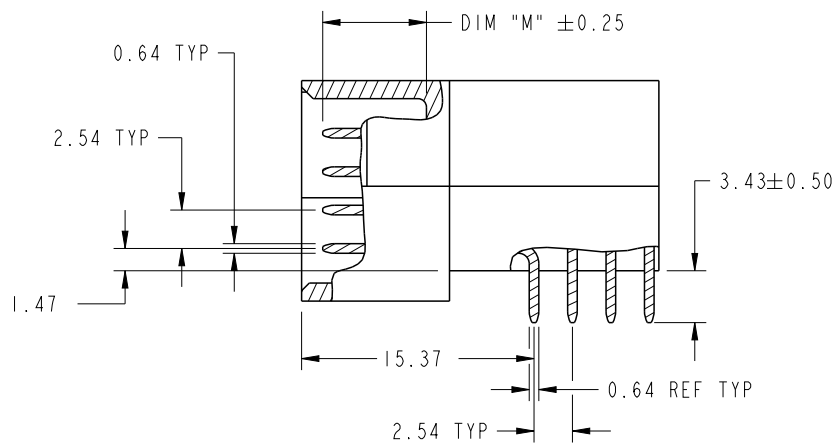
CODE	DIM "M" MATING LENGTH	CONTACT TYPE
U	[6.86]	SIGNAL
T	[6.86]	SIGNAL
S	[6.86]	SIGNAL
R	[6.86]	SIGNAL
PA	[N/A]	POWER



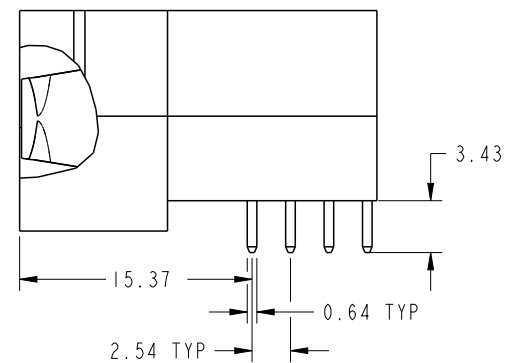
Copyright FCI.

spec ref	See Notes			dr	Luo Weller	2014/03/25	projection 	MM ←→	size	A4	scale	1:1
tolerance std	TOLERANCES UNLESS OTHERWISE SPECIFIED			eng	Luo Weller	2014/04/01			ecn no	-		
See Notes				chr	-	-			rel level	Released		
surface	linear	0.X	±0.5	FCI www.fci.com	part no			20S+6P	dwg no	51939-850	rev	A
		0.XX	±0.25		RIGHT ANGLE SOLDER HEADER							
		0.XXX	±0.1		cat. no.							
	angular	0°	±2°	Product - Customer Drw			sheet 1 of 4					

PrdE File - REV C - 2009-06-09



BROKEN-OUT SECTION A-A
SCALE 2:1

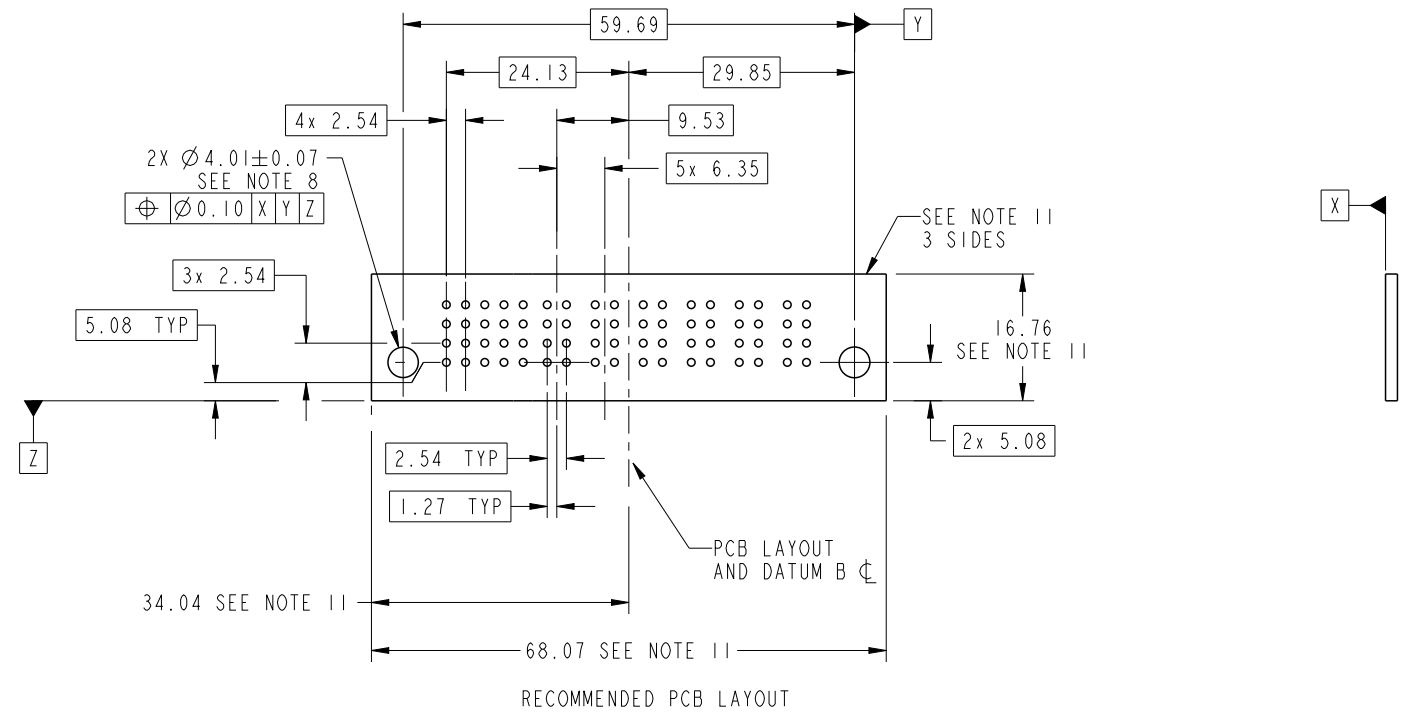


BROKEN-OUT SECTION B-B
SCALE 2:1

dr	Luo Weller	2014/03/25	projection 	MM 	size	A4	scale	1:1
eng	Luo Weller	2014/04/01			ecn no	-		
chr	-	-			rel level	Released		
appr	Pei-Ming Zheng	2014/04/01	product family	PwrBlade	rev	A		
	title	20S+6P RIGHT ANGLE SOLDER HEADER		dwg no	51939-850			
www.fci.com	cat. no.	-	Product - Customer Drw	sheet 2 of 4				



Copyright FCI.



dr	Luo Weller	2014/03/25	projection 	MM ←→	size	A4	scale	1:1
eng	Luo Weller	2014/04/01			ecn no	-		
chr	-	-			rel level	Released		
appr	Pei-Ming Zheng	2014/04/01	product family	PwrBlade				
	title	20S+6P RIGHT ANGLE SOLDER HEADER		dwg no	51939-850		rev	A
www.fci.com	cat. no.	-	Product - Customer Drw			sheet 3 of 4		

NOTES:

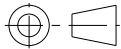

1. DIMENSIONS AND TOLERANCES ARE IN ACCORDANCE WITH ASME Y14.5M, 1994 UNLESS OTHERWISE SPECIFIED.

CONNECTOR NOTES:

- 2. HOUSING MATERIAL: UL 94 V-0 GLASS FILLED HIGH-TEMP THERMOPLASTIC
POWER CONTACT MATERIAL: COPPER ALLOY
SIGNAL PIN MATERIAL: COPPER ALLOY
- 3. SEE ITEM 1 & 2 IN PRINT 10064183 FOR PLATING SPEC OF 51939-850 AND 51939-850LF RESPECTIVELY.
- 4. MANUFACTURER'S NAME, DATE CODE AND OPTIONAL P/N TO APPEAR ON THIS SURFACE. THE P/N CAN BE OMITTED IF THERE IS NOT ENOUGH SPACE ON THIS SURFACE.
- 5. PRODUCT SPECIFICATION GS-12-149.
APPLICATION SPECIFICATION BUS-20-067.
- 6. PACKAGED IN TRAYS.

PCB NOTES:

- 7. ALL HOLE DIAMETERS ARE FINISHED HOLE SIZE.
- 8. MOUNTING HOLES, WHERE APPLICABLE, ARE UNPLATED.
- 9. $\varnothing 1.151 \pm 0.025$ DRILLED HOLES PLATED WITH
0.008 MIN SnPb OR Sn OVER 0.03
TO 0.08 Cu PLATING TO ACHIEVE
 $\varnothing 1.02 \pm 0.07$ HOLE.
- 10. "DIM XXX" TO BE DETERMINED BY THE CUSTOMER.
- 11. CONNECTOR KEEP-OUT ZONE.

dr	Luo Weller	2014/03/25	projection 	MM 	size	A4	scale	1:1		
eng	Luo Weller	2014/04/01			ecn no	-				
chr	-	-			product family	PwrBlade	rel level	Released		
appr	Pei-Ming Zheng	2014/04/01	FCj		title	20S+6P	dwg no	51939-850	rev	A
www.fci.com		cat. no.	-	Product - Customer Drw			sheet 4 of 4			



Copyright FCI.